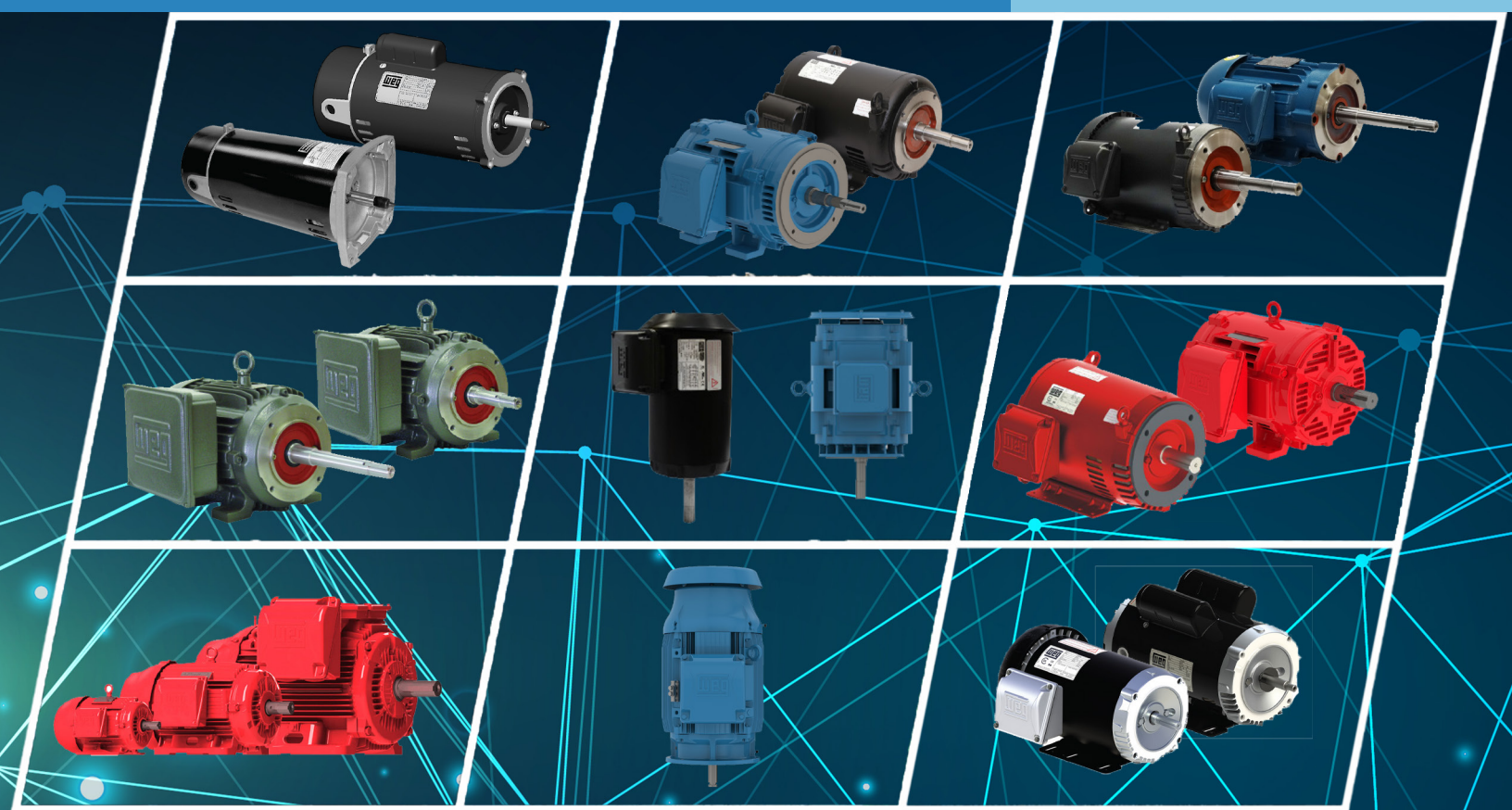


WEG Standard Product Catalog

Pumps



Register to keep your
catalog up-to-date



Pump Motors

JET PUMP SINGLE-PHASE (56C/56J FRAMES)

TEFC – Foot Mount	A-202
TEFC – Footless	A-202
ODP – Foot Mount	A-203
ODP – Footless	A-203
TEFC – Footless - Explosion Proof	A-203

JET PUMP THREE-PHASE (56C/56J FRAMES)

TEFC – Foot Mount	A-204
TEFC – Footless	A-204
ODP – Foot Mount	A-205
ODP – Footless	A-205

POOL & SPA SINGLE-PHASE MOTORS

ODP – C-Face – Start Capacitor – High Service Factor	A-207
ODP – Square Face – Start Capacitor – High Service Factor	A-207
ODP – C-Face – Start Capacitor – Low Service Factor	A-208
ODP – Square Face – Start Capacitor – Low Service Factor	A-208

CLOSE-COUPLED PUMP TEFC MOTORS

JM – TEFC – Single-Phase	A-209
JP – TEFC – Single-Phase	A-210
JM – TEFC – Three-Phase	A-212
JP – TEFC – Three-Phase	A-216
JP – TEFC – Explosion Proof	A-219

CLOSE-COUPLED PUMP ODP MOTORS

JM – ODP – Single-Phase	A-220
JP – ODP – Single-Phase	A-220
JM – ODP – Three-Phase	A-221
JM – ODP – Three-Phase – Footless Vertical	A-224
JP – ODP – Three-Phase	A-225
JP – ODP – Three-Phase – Footless Vertical	A-228

CLOSE-COUPLED PUMP TEFC MOTORS - WITH INTERNAL AEGIS® SGR

JM – TEFC – Three-Phase	A-230
JP – TEFC – Three-Phase	A-231

CLOSE-COUPLED PUMP ODP MOTORS - WITH INTERNAL AEGIS® SGR

JM – ODP – Three-Phase	A-232
JP – ODP – Three-Phase	A-233

FIRE PUMP MOTORS

ODP – Three-Phase	A-235
ODP – Three-Phase – C-Face	A-237
ODP – Three-Phase – JM - Footless Vertical	A-238
ODP – Three-Phase – JP - Footless Vertical	A-239
TEFC (50Hz) – Three-Phase – IE2	A-241

P-BASE MOTORS

TEFC – Three-Phase – NEMA Premium®	A-244
------------------------------------	-------

Pump Motors

JET PUMP (56C/56J FRAMES)

These versatile motors have the torque and durability for the toughest commercial applications, yet are also economical choices for residential applications. Available with or without base and in “J” and “C” configurations

ODP & TEFC - Single Phase

- Insulation class B
- Sealed ball bearings (Drive end)
- NEMA Service factor

ODP & TEFC - Three Phase

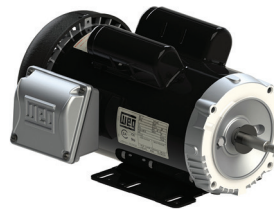
- Insulation class B (ODP)
- Insulation class F (TEFC)
- NEMA Service factor



ODP Single Phase



ODP Three Phase



TEFC Single Phase



TEFC Three Phase

Features that make a difference:

ODP & TEFC - Single Phase

- Automatic Reset Thermal Overload Protector
- Stainless steel shaft end

ODP & TEFC - Three Phase

- Stainless steel shaft end



Pump Motors



JET PUMP SINGLE-PHASE (56C/56J FRAMES)



TEFC - Foot Mount

HP	kW	RPM	Frame	Catalog Number	List Price	Mult. Symbol	Approx. Shipping Weight (lbs)	Service Factor	FL Amps @ High	FL. Eff (%)	"C" Dimension (in)	Voltage (V)	Notes
0.33	0.25	3600	W56C	.3336ES1BJPW56C-S	\$263	P1A	24	1.15	2.60	54.0	11.106	115/208-230	3;9
		3600	W56J	.3336ES1BJPW56J-S	\$282	P1B	22	1.15	2.60	54.0	11.606	115/208-230	3;9
0.5	0.37	3600	W56C	.5036ES1BJPW56C-S	\$284	P1A	26	1.15	3.50	60.0	11.500	115/208-230	3;9
		3600	W56J	.5036ES1BJPW56J-S	\$300	P1B	24	1.15	3.50	58.0	12.000	115/208-230	3;9
0.75	0.55	3600	56C	.7536ES1BJP56C-S	\$320	P1A	29	1.15	4.00	66.0	12.720	115/208-230	3;9
		3600	56J	.7536ES1BJP56J-S	\$330	P1B	29	1.15	4.00	64.0	13.220	115/208-230	3;9
1	0.75	3600	56C	00136ES1BJP56C-S	\$344	P1A	32	1.15	5.10	70.0	13.114	115/208-230	3;9
		3600	56J	00136ES1BJP56J-S	\$374	P1B	33	1.15	5.10	67.0	13.614	115/208-230	3;9
1.5	1.1	3600	56C	00156ES1BJP56C-S	\$412	P1A	37	1.15	6.60	75.0	13.902	115/208-230	3;9
		3600	56J	00156ES1BJP56J-S	\$425	P1B	37	1.15	6.60	70.0	14.402	115/208-230	3;9
2	1.5	3600	56HC	00236ES1BJP56C-S	\$487	P1A	42	1.15	8.70	74.0	14.295	115/208-230	3;9
		3600	56HJ	00236ES1BJP56J-S	\$486	P1B	42	1.15	8.70	74.0	14.795	115/208-230	3;9
3	2.2	3600	56HC	00336ES1DJP56C-S	\$548	P1A	51	1.15	12.7	80.0	15.476	230	3;9
		3600	56HJ	00336ES1DJP56J-S	\$557	P1B	53	1.15	12.7	80.0	15.976	230	3;9



TEFC - Footless

HP	kW	RPM	Frame	Catalog Number	List Price	Mult. Symbol	Approx. Shipping Weight (lbs)	Service Factor	FL Amps @ High	FL. Eff (%)	"C" Dimension (in)	Voltage (V)	Notes
0.33	0.25	3600	W56C	.3336ES1BJPRW56C-S	\$282	P1A	24	1.15	2.60	54.0	11.106	115/208-230	3;9;20;51
		3600	W56J	.3336ES1BJPRW56J-S	\$296	P1B	21	1.15	2.60	54.0	11.606	115/208-230	3;9;20
0.5	0.37	3600	W56C	.5036ES1BJPRW56C-S	\$299	P1A	26	1.15	3.50	60.0	11.500	115/208-230	3;9;20
		3600	W56J	.5036ES1BJPRW56J-S	\$305	P1B	24	1.15	3.50	60.0	12.000	115/208-230	3;9;20
0.75	0.55	3600	56C	.7536ES1BJPR56C-S	\$341	P1A	29	1.15	4.00	66.0	12.720	115/208-230	3;9;20
		3600	56J	.7536ES1BJPR56J-S	\$336	P1B	29	1.15	4.00	64.0	13.220	115/208-230	3;9;20
1	0.75	3600	56C	00136ES1BJPR56C-S	\$357	P1A	32	1.15	5.10	70.0	13.114	115/208-230	3;9;20
		3600	56J	00136ES1BJPR56J-S	\$386	P1B	32	1.15	5.10	67.0	13.614	115/208-230	3;9;20
1.5	1.1	3600	56C	00156ES1BJPR56C-S	\$432	P1A	37	1.15	6.60	75.0	13.902	115/208-230	3;9;20
		3600	56J	00156ES1BJPR56J-S	\$438	P1B	37	1.15	6.60	75.0	14.402	115/208-230	3;9;20
2	1.5	3600	56C	00236ES1BJPR56C-S	\$494	P1A	42	1.15	8.70	77.0	14.295	115/208-230	3;9;20
		3600	56J	00236ES1BJPR56J-S	\$498	P1B	41	1.15	8.70	77.0	14.795	115/208-230	3;9;20
3	2.2	3600	56C	00336ES1DJP56C-S	\$555	P1A	51	1.15	12.7	80.0	15.476	230	3;9;20
		3600	56J	00336ES1DJP56J-S	\$573	P1B	53	1.15	12.7	80.0	15.976	230	3;9;20



JET PUMP SINGLE-PHASE (56C/56J FRAMES)

ODP - Foot Mount

HP	kW	RPM	Frame	Catalog Number	List Price	Mult. Symbol	Approx. Shipping Weight (lbs)	Service Factor	FL Amps @ High	FL. Eff (%)	"C" Dimension (in)	Voltage (V)	Notes
0.33	0.25	3600	W56J	.33360S1BJPW56J-S	\$254	P1B	19	1.75	2.50	59.0	10.366	115/208-230	3;9
0.5	0.37	3600	W56J	.50360S1BJPW56J-S	\$258	P1B	22	1.60	3.30	65.0	10.760	115/208-230	3;9
0.75	0.55	3600	W56J	.75360S1BJPW56J-S	\$296	P1B	25	1.50	4.80	68.3	11.154	115/208-230	3;9
1	0.75	3600	56J	001360S1BJP56J-S	\$334	P1B	29	1.40	6.40	68.0	12.008	115/208-230	3;9
1.5	1.1	3600	56J	001560S1BJP56J-S	\$382	P1B	33	1.30	8.60	72.0	12.402	115/208-230	3;9
2	1.5	3600	56J	002360S1BJP56J-S	\$438	P1B	41	1.20	10.9	75.0	13.189	115/208-230	3;9
3	2.2	3600	56J	003360S1DJP56J-S	\$499	P1B	46	1.15	13.2	78.0	13.976	230	3;9



ODP - Footless

HP	kW	RPM	Frame	Catalog Number	List Price	Mult. Symbol	Approx. Shipping Weight (lbs)	Service Factor	FL Amps @ High	FL. Eff (%)	"C" Dimension (in)	Voltage (V)	Notes
0.33	0.25	3600	W56C	.33360S1BJPRW56C-S	\$237	P1A	19	1.75	2.50	59.0	9.866	115/208-230	3;9;20
		3600	W56J	.33360S1BJPRW56J-S	\$255	P1B	19	1.75	2.50	59.0	10.366	115/208-230	3;9;20
0.5	0.37	3600	W56C	.50360S1BJPRW56C-S	\$255	P1A	21	1.60	3.30	65.0	10.260	115/208-230	3;9;20
		3600	W56J	.50360S1BJPRW56J-S	\$258	P1B	21	1.60	3.30	65.0	10.760	115/208-230	3;9;20
0.75	0.55	3600	W56C	.75360S1BJPRW56C-S	\$297	P1A	24	1.50	4.80	67.0	10.654	115/208-230	3;9;20
		3600	W56J	.75360S1BJPRW56J-S	\$296	P1B	24	1.50	4.80	68.3	11.154	115/208-230	3;9;20
1	0.75	3600	56C	001360S1BJPR56C-S	\$317	P1A	32	1.40	6.40	68.0	11.496	115/208-230	3;9;20
		3600	56J	001360S1BJPR56J-S	\$334	P1B	29	1.40	6.40	66.3	12.008	115/208-230	3;9;20
1.5	1.1	3600	56C	001560S1BJPR56C-S	\$338	P1A	36	1.30	8.60	72.0	11.890	115/208-230	3;9;20
		3600	56J	001560S1BJPR56J-S	\$382	P1B	33	1.30	8.60	73.2	12.402	115/208-230	3;9;20
2	1.5	3600	56C	002360S1BJPR56C-S	\$424	P1A	40	1.20	10.9	75.0	12.677	115/208-230	3;9;20
		3600	56J	002360S1BJPR56J-S	\$438	P1B	40	1.20	10.9	75.0	13.189	115/208-230	3;9;20
3	2.2	3600	56C	003360S1DJP56C-S	\$482	P1A	45	1.15	13.2	77.1	13.465	230	3;9;20
		3600	56J	003360S1DJP56J-S	\$499	P1B	45	1.15	13.2	77.1	13.976	230	3;9;20



TEFC - Footless Mount - Explosion Proof

HP	kW	RPM	Frame	Catalog Number	List Price	Mult. Symbol	Approx. Shipping Weight (lbs)	Service Factor	FL Amps @ High	FL. Eff (%)	"C" Dimension (in)	Voltage (V)	Notes
0.5	0.37	3600	56J	.5036XS3EJPR56J	\$810	XF	24	1.00	0.9	73.1	12.3	230/460	1;3;9;43
0.75	0.55	3600	56J	.7536XS3EJPR56J	\$835	XF	25	1.00	1.2	77.1	12.3	230/460	1;3;9;45
1	0.75	3600	56J	00136XT3EJPR56J	\$1,030	XF	27	1.00	1.6	77	12.43	230/460	1;3;9;47
1.5	1.1	3600	56J	00156XT3EJPR56J	\$1,105	XF	30	1.00	2.1	84	13.3	230/460	1;3;9;49
2	1.5	3600	56J	00236XT3EJPR56J	\$1,153	XF	35	1.00	2.7	85.5	13.3	230/460	1;3;9;51

Please refer to back cover for description of "NOTES"

For detailed specifications, data sheets, drawings and performance curves visit <http://www.weg.net>

Data subject to change without notice.

Can't find what you are looking for? Call 1-800-ASK-4WEG (275-4934)

Pump Motors



JET PUMP THREE-PHASE (56C/56J FRAMES)



TEFC - Foot Mount

HP	kW	RPM	Frame	Catalog Number	List Price	Mult. Symbol	Approx. Shipping Weight (lbs)	Service Factor	FL Amps @ High	FL. Eff (%)	"C" Dimension (in)	Voltage (V)	Notes
0.33	0.25	3600	56J	.3336ES3EJP56J-S	\$259	P1B	24	1.15	0.60	62.0	11.654	208-230/460	9
0.5	0.37	3600	56J	.5036ES3EJP56J-S	\$267	P1B	26	1.15	0.80	68.0	12.047	208-230/460	9
0.75	0.55	3600	56J	.7536ES3EJP56J-S	\$301	P1B	27	1.15	1.10	72.0	12.047	208-230/460	9
		3600	56J	.7536ES3HJP56J-S	\$301	P1B	27	1.15	0.90	72.0	12.047	575	9
1	0.75	3600	W56J	00136ET3EJPW56J-S	\$434	P1B	25	1.15	1.50	78.5	11.606	230/460	9
		3600	W56J	00136ET3HJPW56J-S	\$434	P1B	25	1.15	1.20	78.5	11.606	575	9
1.5	1.1	3600	56J	00156ET3EJP56J-S	\$473	P1B	41	1.15	1.90	84.0	13.614	230/460	9
		3600	56J	00156ET3HJP56J-S	\$473	P1B	41	1.15	1.50	84.0	13.614	575	9
2	1.5	3600	56J	00236ET3EJP56J-S	\$535	P1B	46	1.15	2.50	85.5	14.402	230/460	9
		3600	56J	00236ET3HJP56J-S	\$535	P1B	46	1.15	2.00	85.5	14.402	575	9
3	2.2	3600	56J	00336ET3EJP56J-S	\$634	P1B	55	1.15	3.50	86.5	15.583	230/460	9
		3600	56J	00336ET3HJP56J-S	\$634	P1B	55	1.15	2.80	86.5	15.583	575	9



TEFC - Footless

HP	kW	RPM	Frame	Catalog Number	List Price	Mult. Symbol	Approx. Shipping Weight (lbs)	Service Factor	FL Amps @ High	FL. Eff (%)	"C" Dimension (in)	Voltage (V)	Notes
0.33	0.25	3600	56C	.3336ES3EJPR56C-S	\$257	P1A	24	1.15	0.60	62.0	11.142	208-230/460	9;20
		3600	56J	.3336ES3EJPR56J-S	\$268	P1B	24	1.15	0.60	62.0	11.654	208-230/460	9;20
0.5	0.37	3600	56C	.5036ES3EJPR56C-S	\$270	P1A	26	1.15	0.80	68.0	11.535	208-230/460	9;20
		3600	56J	.5036ES3EJPR56J-S	\$282	P1B	26	1.15	0.80	68.0	12.047	208-230/460	9;20
0.75	0.55	3600	56C	.7536ES3EJPR56C-S	\$293	P1A	27	1.15	1.10	72.0	11.535	208-230/460	9;20;51
		3600	56J	.7536ES3EJPR56J-S	\$319	P1B	27	1.15	1.10	72.0	12.047	208-230/460	9;20
1	0.75	3600	W56C	00136ET3EJPRW56C-S	\$425	P1A	25	1.15	1.50	78.5	11.106	230/460	9;20
		3600	W56J	00136ET3EJPRW56J-S	\$434	P1B	25	1.15	1.50	78.5	11.606	230/460	9;20
1.5	1.1	3600	56C	00156ET3EJPR56C-S	\$455	P1A	39	1.15	1.90	84.0	13.114	230/460	9;20
		3600	56J	00156ET3EJPR56J-S	\$468	P1B	41	1.15	1.90	84.0	13.614	230/460	9;20
		3600	56J	00156ET3HJPR56J-S	\$468	P1B	41	1.15	1.50	84.0	13.614	575	9;20
2	1.5	3600	56C	00236ET3EJPR56C-S	\$490	P1A	46	1.15	2.50	85.5	13.901	230/460	9;20
		3600	56J	00236ET3EJPR56J-S	\$525	P1B	46	1.15	2.50	85.5	14.402	230/460	9;20
		3600	56J	00236ET3HJPR56J-S	\$525	P1B	46	1.15	2.00	85.5	14.402	575	9;20
3	2.2	3600	56C	00336ET3EJPR56C-S	\$602	P1A	55	1.15	3.50	86.5	15.083	230/460	9;20
		3600	56J	00336ET3EJPR56J-S	\$624	P1B	55	1.15	3.50	86.5	15.583	230/460	9;20

Pump Motors

Please refer to back cover for description of "NOTES"

For detailed specifications, data sheets, drawings and performance curves visit <http://www.weg.net>



JET PUMP THREE-PHASE (56C/56J FRAMES)

ODP - Foot Mount

HP	kW	RPM	Frame	Catalog Number	List Price	Mult. Symbol	Approx. Shipping Weight (lbs)	Service Factor	FL Amps @ High	FL. Eff (%)	"C" Dimension (in)	Voltage (V)	Notes
0.33	0.25	3600	56J	.33360S3EJP56J-S	\$224	P1B	21	1.75	0.60	68.0	10.827	208-230/460	9
			56J	.50360S3EJP56J-S	\$236	P1B	21	1.60	0.90	68.0	10.827	208-230/460	9
0.5	0.37	3600	56J	.50360S3HJP56J-S	\$236	P1B	21	1.60	0.70	70.0	10.827	575	9
			56J	.75360S3EJP56J-S	\$271	P1B	24	1.50	1.20	72.0	11.220	208-230/460	9
0.75	0.55	3600	56J	.75360S3HJP56J-S	\$271	P1B	24	1.50	1.00	72.0	11.220	575	9
			56J	.001360S3EJP56J-S	\$286	P1B	25	1.40	1.50	74.0	11.220	208-230/460	9
1	0.75	3600	56J	.001360S3HJP56J-S	\$286	P1B	25	1.40	1.20	75.5	11.220	575	9
			56J	.001560S3EJP56J-S	\$296	P1B	28	1.30	2.10	77.0	11.614	208-230/460	9
1.5	1.1	3600	56J	.001560S3HJP56J-S	\$296	P1B	28	1.30	1.70	77.0	11.614	575	9
			56HJ	.002360S3EJP56J-S	\$316	P1B	32	1.20	2.80	78.5	12.008	208-230/460	9
2	1.5	3600	56HJ	.002360S3HJP56J-S	\$316	P1B	32	1.20	2.30	78.5	12.008	575	9
			56HJ	.003360S3EJP56J-S	\$339	P1B	38	1.15	3.90	81.5	12.795	208-230/460	9
3	2.2	3600	56HJ	.003360S3HJP56J-S	\$339	P1B	38	1.15	3.10	81.5	12.795	575	9



ODP - Footless

HP	kW	RPM	Frame	Catalog Number	List Price	Mult. Symbol	Approx. Shipping Weight (lbs)	Service Factor	FL Amps @ High	FL. Eff (%)	"C" Dimension (in)	Voltage (V)	Notes
0.33	0.25	3600	56C	.33360S3EJPR56C-S	\$220	P1A	22	1.75	0.60	68.0	10.315	208-230/460	9;20
			56J	.33360S3EJPR56J-S	\$229	P1B	21	1.75	0.60	66.0	10.827	208-230/460	9;20
0.5	0.37	3600	56C	.50360S3EJPR56C-S	\$224	P1A	29	1.60	0.90	70.0	10.315	208-230/460	9;20
			56J	.50360S3EJPR56J-S	\$241	P1B	21	1.60	0.90	68.0	10.827	208-230/460	9;20
0.75	0.55	3600	56C	.75360S3EJPR56C-S	\$257	P1A	24	1.50	1.20	70.0	10.709	208-230/460	9;20
			56J	.75360S3EJPR56J-S	\$278	P1B	24	1.50	1.20	72.0	11.22	208-230/460	9;20
			56C	.75360S3HJPR56C-S	\$257	P1A	24	1.50	1.00	70.0	10.709	575	9;20
			56J	.75360S3HJPR56J-S	\$277	P1B	24	1.50	1.00	70.0	11.220	575	9;20
1	0.75	3600	56C	.001360S3EJPR56C-S	\$274	P1A	25	1.40	1.50	75.5	10.709	208-230/460	9;20
			56J	.001360S3EJPR56J-S	\$287	P1B	25	1.40	1.50	74.0	11.220	208-230/460	9;20
1.5	1.1	3600	56C	.001560S3EJPR56C-S	\$290	P1A	28	1.30	2.10	77.0	11.102	208-230/460	9;20
			56J	.001560S3EJPR56J-S	\$305	P1B	28	1.30	2.10	77.0	11.614	208-230/460	9;20
			56C	.001560S3HJPR56C-S	\$290	P1A	28	1.30	1.70	77.0	11.102	575	9;20
2	1.5	3600	56C	.002360S3EJPR56C-S	\$311	P1A	30	1.20	2.80	78.5	11.496	208-230/460	9;20
			56J	.002360S3EJPR56J-S	\$321	P1B	32	1.20	2.80	78.5	12.008	208-230/460	9;20
			56C	.002360S3HJPR56C-S	\$311	P1A	30	1.20	2.30	78.5	11.496	575	9;20
			56J	.002360S3HJPR56J-S	\$321	P1B	32	1.20	2.30	78.5	12.008	575	9;20
3	2.2	3600	56C	.003360S3EJPR56C-S	\$332	P1A	35	1.15	3.90	81.5	12.283	208-230/460	9;20
			56J	.003360S3EJPR56J-S	\$350	P1B	38	1.15	3.90	81.5	12.795	208-230/460	9;20

Please refer to back cover for description of "NOTES"

For detailed specifications, data sheets, drawings and performance curves visit <http://www.weg.net>

Data subject to change without notice.

Can't find what you are looking for? Call 1-800-ASK-4WEG (275-4934)

Pump Motors

POOL & SPA MOTORS

ODP

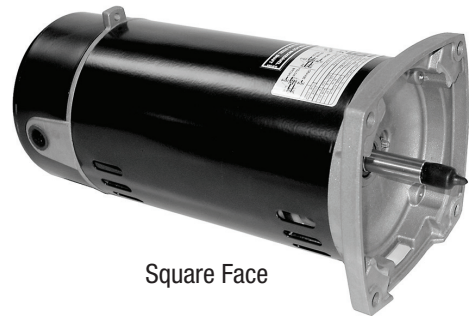
These motors are specially designed for pool duty. Available in high and low Service Factor.

Standard Features:

- C-Face is cast iron; square flange is aluminum
- Class B insulation



C-Face



Square Face

Features that make a difference:

- Dual compartment for easy maintenance
- Rated for 50 degrees Celsius ambient temperature
- Stainless steel shaft (AISI 316)
- Automatic Reset thermal overload protection
- Threaded shaft
- Internal and external grounding
- Terminal box threaded NPT 1/2"
- Sealed bearings
- Drive endshield sealing (V'ring for C-face, Lip Seal for Square flange)
- Epoxy coating

** Not for use in California





ODP - C-Face - Start Capacitor - High Service Factor

HP	kW	RPM	Frame	Catalog Number	List Price	Mult. Symbol	Approx. Shipping Weight (lbs)	Service Factor	FL Amps @ High	FL Eff (%)	"C" Dimension (in)	Voltage (V)	Notes
0.5	0.37	3600	K56J	PCJ105H	\$236	P1D	23	1.60	4.55	60.4	13.898	115/230	3;9;20
0.75	0.55	3600	K56J	PCJ107H	\$263	P1D	27	1.50	5.60	65.8	13.898	115/230	3;9;20
1	0.75	3600	L56J	PCJ110H	\$300	P1D	30	1.40	7.05	69.7	14.488	115/230	3;9;20
1.5	1.1	3600	M56J	PCJ115H	\$400	P1D	33	1.30	7.50	76.3	15.079	230	3;9;20
2	1.5	3600	M56J	PCJ120H	\$486	P1D	34	1.20	9.20	78.3	15.079	230	3;9;20



ODP - Square Face - Start Capacitor - High Service Factor

HP	kW	RPM	Frame	Catalog Number	List Price	Mult. Symbol	Approx. Shipping Weight (lbs)	Service Factor	FL Amps @ High	FL Eff (%)	"C" Dimension (in)	Voltage (V)	Notes
0.33	0.25	3600	K48Y	PCQ103H	\$231	P1D	20	1.95	3.45	55.0	12.913	115/230	3;9;20
0.5	0.37	3600	K48Y	PCQ105H	\$241	P1D	22	1.90	4.55	60.4	12.913	115/230	3;9;20
0.75	0.55	3600	K48Y	PCQ107H	\$275	P1D	26	1.65	5.60	65.8	12.913	115/230	3;9;20
1	0.75	3600	L48Y	PCQ110H	\$320	P1D	29	1.65	7.05	69.7	13.504	115/230	3;9;20
1.5	1.1	3600	M48Y	PCQ115H	\$411	P1D	32	1.50	7.50	76.3	14.094	230	3;9;20
2	1.5	3600	M48Y	PCQ120H	\$500	P1D	33	1.30	9.20	78.3	14.094	230	3;9;20

Please refer to back cover for description of "NOTES"

For detailed specifications, data sheets, drawings and performance curves visit <http://catalog.wegelectric.com>

Data subject to change without notice.

Can't find what you are looking for? Call 1-800-ASK-4WEG (275-4934)



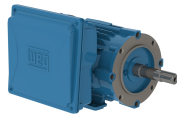
ODP - C-Face - Start Capacitor - Low Service Factor

HP	kW	RPM	Frame	Catalog Number	List Price	Mult. Symbol	Approx. Shipping Weight (lbs)	Service Factor	FL Amps @ High	FL Eff (%)	"C" Dimension (in)	Voltage (V)	Notes
0.75	0.55	3600	K56J	PCJ107	\$236	P1D	23	1.30	5.10	66.2	13.898	115/230	3;9;20
1	0.75	3600	K56J	PCJ110	\$263	P1D	26	1.25	6.25	70.1	13.898	115/230	3;9;20
1.5	1.1	3600	L56J	PCJ115	\$300	P1D	30	1.10	8.85	69.6	14.488	115/230	3;9;20
2	1.5	3600	M56J	PCJ120	\$400	P1D	33	1.10	9.30	76.6	15.079	230	3;9;20
2.5	1.9	3600	M56J	PCJ125	\$486	P1D	34	1.04	10.8	80.7	15.079	230	3;9;20



ODP - Square Face - Start Capacitor - Low Service Factor

HP	kW	RPM	Frame	Catalog Number	List Price	Mult. Symbol	Approx. Shipping Weight (lbs)	Service Factor	FL Amps @ High	FL Eff (%)	"C" Dimension (in)	Voltage (V)	Notes
0.50	0.37	3600	K48Y	PCQ105	\$231	P1D	20	1.30	3.75	61.8	12.913	115/230	3;9;20;51
0.75	0.55	3600	K48Y	PCQ107	\$241	P1D	22	1.30	5.10	66.2	12.913	115/230	3;9;20
1	0.75	3600	K48Y	PCQ110	\$275	P1D	26	1.25	6.25	70.1	12.913	115/230	3;9;20
1.5	1.1	3600	L48Y	PCQ115	\$320	P1D	29	1.10	8.85	69.6	13.504	115/230	3;9;20
2	1.5	3600	M48Y	PCQ120	\$411	P1D	32	1.10	9.30	76.6	14.094	230	3;9;20
2.5	1.9	3600	M48Y	PCQ125	\$500	P1D	33	1.04	10.8	80.7	14.094	230	3;9;20



JM - TEFC - Single-Phase

HP	kW	RPM	Frame	Catalog Number	List Price	Mult. Symbol	Approx. Shipping Weight (lbs)	Service Factor	FL Amps @ High	FL. Eff (%)	"C" Dimension (in)	Voltage (V)	Notes
1	0.75	3600	143/5JM	00136ES1E143JM-W22	\$682	P1	51	1.15	2.4	70	16.811	208-230/460	
1.5	1.1	3600	143/5JM	00156ES1E143JM-W22	\$729	P1	53	1.15	3.4	74	16.811	208-230/460	
		1800	143/5JM	00158ES1E145JM-W22	\$754	P1	69	1.15	3.38	77	16.811	208-230/460	
2	1.5	1800	143/5JM	00218ES1E145JM-W22	\$814	P1	70	1.15	4.56	78.5	16.811	208-230/460	
3	2.2	3600	143/5JM	00336ES1C145JM-W22	\$1,076	P1	72	1.15	12.6	78.5	16.811	208-230	
		1800	182/4JM	00318ES1E184JM-W22	\$1,182	P1	108	1.15	6.9	77	18.543	208-230/460	
		1800	182/4JM	00318ES1B184JM-W22	\$1,182	P1	108	1.15	15.1	77	18.543	115/208-230	
5	3.7	3600	182/4JM	00536ES1C184JM-W22	\$1,457	P1	110	1.15	19	85.5	18.543	208-230	
		1800	182/4JM	00518ES1B184JM-W22	\$1,430	P1	127	1.15	22.4	78	18.543	115/208-230	
7.5	5.5	3600	213/5JM	00736ES1C213JM-W22	\$1,641	P1	169	1.15	28.3	85.5	20.354	208-230	
		1800	213/5JM	00718ES1C215JM-W22	\$1,766	P1	185	1.15	31.7	83	20.354	208-230	
10	7.5	1800	213/5JM	01018ES1E215JM-W22	\$2,057	P1	194	1.15	20.4	84	20.354	208-230/460	
		1800	213/5JM	01018ES1C215JM-W22	\$2,057	P1	197	1.15	40.9	84	20.354	208-230	

Please refer to back cover for description of "NOTES"

For detailed specifications, data sheets, drawings and performance curves visit <http://www.weg.net>

Data subject to change without notice.

Can't find what you are looking for? Call 1-800-ASK-4WEG (275-4934)

Pump Motors



CLOSE-COUPLED PUMP TEFC MOTORS

JP - TEFC - Single-Phase

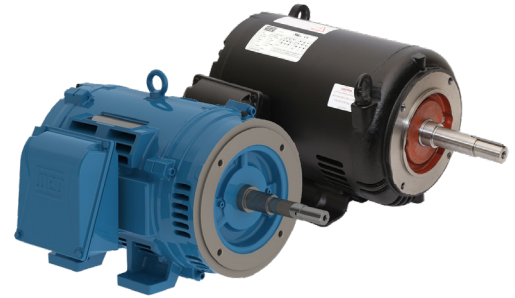
HP	kW	RPM	Frame	Catalog Number	List Price	Mult. Symbol	Approx. Shipping Weight (lbs)	Service Factor	FL Amps @ High	FL. Eff (%)	"C" Dimension (in)	Voltage (V)	Notes
0.5	0.37	3600	143/5JP	.5036ES1E143JP-W22	\$668	P1	51	1.15	1.47	57.7	19.882	208-230/460	
1.5	1.1	3600	143/5JP	00156ES1E143JP-W22	\$729	P1	53	1.15	3.40	74.0	19.882	208-230/460	
2	1.5	3600	143/5JP	00236ES1E145JP-W22	\$770	P1	69	1.15	4.50	77.0	19.882	208-230/460	
		1800	143/5JP	00218ES1E145JP-W22	\$814	P1	69	1.15	4.56	78.5	19.882	208-230/460	
3	2.2	3600	143/5JP	00336ES1E145JP-W22	\$1,076	P1	61	1.15	6.25	78.5	19.882	208-230/460	
		1800	182/4JP	00318ES1E184JP-W22	\$1,182	P1	103	1.15	6.90	77.0	21.614	208-230/460	
		1800	182/4JP	00318ES1B184JP-W22	\$1,182	P1	103	1.15	15.1	77.0	21.614	115/208-230	
5	3.7	3600	182/4JP	00536ES1E184JP-W22	\$1,457	P1	108	1.15	9.50	85.5	21.614	208-230/460	
		3600	182/4JP	00536ES1B184JP-W22	\$1,457	P1	103	1.15	20.8	84.0	21.614	115/208-230	
		1800	182/4JP	00518ES1E184JP-W22	\$1,430	P1	116	1.15	10.7	80.0	21.614	208-230/460	
		1800	182/4JP	00518ES1B184JP-W22	\$1,430	P1	140	1.15	22.4	78.0	21.614	115/208-230	
7.5	5.5	3600	213/5JP	00736ES1E213JP-W22	\$1,641	P1	169	1.15	14.1	85.5	24.212	208-230/460	
		1800	213/5JP	00718ES1E215JP-W22	\$1,762	P1	183	1.15	15.0	83.0	24.212	208-230/460	
10	7.5	3600	213/5JP	01036ES1E215JP-W22	\$2,172	P1	175	1.15	19.4	86.5	24.212	208-230/460	
		3600	213/5JP	01036ES1C215JP-W22	\$2,172	P1	175	1.15	38.9	86.5	24.212	208-230	
		1800	213/5JP	01018ES1E215JP-W22	\$2,057	P1	199	1.15	20.4	84.0	24.212	208-230/460	

Pump Motors

CLOSE-COUPLED PUMP MOTORS

ODP - Three Phase

WEG Open Drip Proof motors are designed to meet demanding applications in environments where dirt and humidity are minimal. These motors are specifically designed to provide maximum ventilation and heat dissipation.



Inverter Rated: 1000 : 1 for variable torque

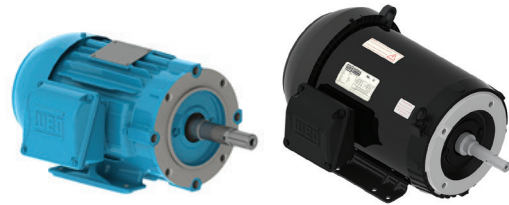
Features that make a difference:

- For rolled steel motors: 50/60 Hz rated (380V on Nameplate - 400/415 Available - Same Horse Power at 50 Hz with a 1.0 Service Factor)
- For W40 - cast iron motors: Nameplated 50 Hz at reduced HP IE3 efficiency and CE mark
- Class F insulation (Impregnation Resin and Magnet wire are class H)
- F1 Mounted (Cast Iron Frame motors are F2 convertible)
- Stainless Steel Nameplate - Laser etched with high contrast background (Cast Iron Frame only)
- Regreasable ball bearings (Frames 254JM/JP and up)
- AEGIS Ring™ inside available

TEFC - Three Phase

High performance with maximum energy efficiency, this is the meaning of the new WEG electric motor. High efficiency and Low cost of Ownership throughout the entire motor lifetime have been the basis for the W22 development. A design created to anticipate concepts on performance and energy savings.

WEG's W22 cast iron platform has an improved cooling system and solid feet for cooler operation and reduced vibration and noise extending the life of the motor.



Inverter Rated: 1000 : 1 for variable torque

Features that make a difference:

- 1.25 Service Factor
- Optimized ventilation system for cooler operation and reduced noise levels
- Solid base for reduced vibration levels
- NPT Threaded terminal box
- AEGIS Ring™ inside available

Standard Features:

- 50/60 Hz rated (380V on Nameplate - 400/415 Available - Same Horse Power at 50 Hz with a 1.0 Service Factor)
- Class F insulation (Impregnation Resin and Magnet wire are class H)
- F1 Mounted (Cast Iron frames are F2 convertible)
- Stainless Steel Nameplate - Laser etched with high contrast background (cast iron frame only)
- Regreasable ball bearings (Frames 254JM/JP and up)
- Gasketed conduit box
- Class I, Div. 2, Groups A, B, C & D – T3, Class II, Div 2, Groups F & G – T3C



Please refer to back cover for description of "NOTES"

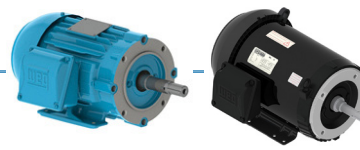
For detailed specifications, data sheets, drawings and performance curves visit <http://www.weg.net>

Data subject to change without notice.

Can't find what you are looking for? Call 1-800-ASK-4WEG (275-4934)

Pump Motors

CLOSE-COUPLED PUMP TEFC MOTORS



JM - TEFC - Three-Phase

HP	kW	RPM	Frame	Catalog Number	List Price	Mult. Symbol	Approx. Shipping Weight (lbs)	Service Factor	FL Amps @ High	FL. Eff (%)	"C" Dimension (in)	Voltage (V)	Notes
1	0.75	1800	143/5JM	00118ET3E143JM-S	\$613	P1S	45	1.15	1.50	85.5	16.102	230/460	9
		1800	143/5JM	00118ET3H143JM-S	\$613	P1S	45	1.15	1.20	85.5	16.102	575	9
		1800	143/5JM	00118ET3V143JM-S	\$613	P1S	45	1.15	1.70	85.5	16.102	200/400	9
		1800	143/5JM	00118ET3E143JM-W22	\$613	P1	55	1.25	1.47	85.5	15.675	230/460	
		1800	143/5JM	00118ET3H143JM-W22	\$613	P1	55	1.25	1.18	85.5	15.675	575	
		1200	143/5JM	00112ET3E145JM-S	\$700	P1S	45	1.15	1.60	82.5	16.102	230/460	9
		1200	143/5JM	00112ET3E145JM-W22	\$700	P1	62	1.25	1.73	82.5	15.675	230/460	
1.5	1.1	3600	143/5JM	00156ET3E143JM-S	\$710	P1S	41	1.15	1.90	84.0	15.709	230/460	9
		3600	143/5JM	00156ET3E143JM-W22	\$710	P1	57	1.25	1.96	84.0	15.675	230/460	
		1800	143/5JM	00158ET3E145JM-S	\$643	P1S	47	1.15	2.00	86.5	16.102	230/460	9
		1800	143/5JM	00158ET3H145JM-S	\$643	P1S	47	1.15	1.60	86.5	16.102	575	9
		1800	143/5JM	00158ET3V145JM-S	\$643	P1S	47	1.15	2.30	86.5	16.102	200/400	9
		1800	143/5JM	00158ET3E145JM-W22	\$643	P1	61	1.25	2.02	86.5	15.675	230/460	
		1800	143/5JM	00158ET3H145JM-W22	\$643	P1	61	1.25	1.62	86.5	15.675	575	
		1200	182/4JM	00152ET3E182JM-S	\$909	P1S	84	1.15	2.20	87.5	17.835	230/460	9
1200	182/4JM	00152ET3E182JM-W22	\$909	P1	99	1.25	2.54	87.5	17.411	230/460			
2	1.5	3600	143/5JM	00236ET3E145JM-S	\$683	P1S	47	1.15	2.50	85.5	16.496	230/460	9
		3600	143/5JM	00236ET3H145JM-S	\$683	P1S	47	1.15	2.00	85.5	16.496	575	9;51
		3600	143/5JM	00236ET3V145JM-S	\$683	P1S	47	1.15	2.80	85.5	16.496	200/400	9
		3600	143/5JM	00236ET3E145JM-W22	\$683	P1	61	1.25	2.56	85.5	15.675	230/460	
		3600	143/5JM	00236ET3H145JM-W22	\$683	P1	58	1.25	2.05	85.5	15.675	575	
		1800	143/5JM	00218ET3E145JM-S	\$707	P1S	50	1.15	2.70	86.5	16.496	230/460	9
		1800	143/5JM	00218ET3H145JM-S	\$707	P1S	50	1.15	2.20	86.5	16.496	575	9
		1800	143/5JM	00218ET3V145JM-S	\$707	P1S	50	1.15	3.10	86.5	16.496	200/400	9
		1800	143/5JM	00218ET3E145JM-W22	\$707	P1	62	1.25	2.76	86.5	15.675	230/460	
		1800	143/5JM	00218ET3H145JM-W22	\$707	P1	62	1.25	2.21	86.5	15.675	575	
		1200	182/4JM	00212ET3E184JM-S	\$1,021	P1S	97	1.15	3.00	88.5	18.622	230/460	9
		1200	182/4JM	00212ET3E184JM-W22	\$1,021	P1	105	1.25	3.23	88.5	17.411	230/460	39
3	2.2	3600	143/5JM	00336ET3E145JM-S	\$897	P1S	56	1.15	3.50	86.5	17.677	230/460	9;12
		3600	143/5JM	00336ET3H145JM-S	\$897	P1S	56	1.15	2.80	86.5	17.677	575	9;12
		3600	182/4JM	00336ET3E182JM-S	\$918	P1S	81	1.15	3.70	86.5	17.835	230/460	9
		3600	182/4JM	00336ET3H182JM-S	\$918	P1S	81	1.15	2.90	86.5	17.835	575	9
		3600	143/5JM	00336ET3E145JM-W22	\$764	P1	60	1.25	3.71	86.5	15.675	230/460	12
		3600	143/5JM	00336ET3H145JM-W22	\$764	P1	60	1.25	2.97	86.5	15.675	575	12
		3600	182/4JM	00336ET3E182JM-W22	\$918	P1	101	1.25	3.63	86.5	17.411	230/460	
		3600	182/4JM	00336ET3H182JM-W22	\$918	P1	101	1.25	2.90	86.5	17.411	575	
		1800	182/4JM	00318ET3E182JM-S	\$1,022	P1S	101	1.15	3.80	89.5	19.409	230/460	9
		1800	182/4JM	00318ET3H182JM-S	\$1,022	P1S	101	1.15	3.10	89.5	19.409	575	9
		1800	182/4JM	00318ET3V182JM-S	\$1,022	P1S	101	1.15	4.40	89.5	19.409	200/400	9
		1800	182/4JM	00318ET3E182JMV-S	\$1,080	P1S	101	1.15	3.80	89.5	20.749	230/460	9;15
		1800	182/4JM	00318ET3E182JM-W22	\$1,022	P1	97	1.25	3.91	89.5	17.411	230/460	
		1800	182/4JM	00318ET3H182JM-W22	\$1,022	P1	96	1.25	3.13	89.5	17.411	575	
		1200	213/5JM	00312ET3E213JM-S	\$1,423	P1S	147	1.15	4.20	89.5	20.433	230/460	9
		1200	213/5JM	00312ET3E213JM-W22	\$1,423	P1	160	1.25	4.41	89.5	20.392	230/460	

continued on next page

Please refer to back cover for description of "NOTES"

For detailed specifications, data sheets, drawings and performance curves visit <http://www.weg.net>

JM - TEFC - Three-Phase - *continued*

HP	kW	RPM	Frame	Catalog Number	List Price	Mult. Symbol	Approx. Shipping Weight (lbs)	Service Factor	FL Amps @ High	FL. Eff (%)	"C" Dimension (in)	Voltage (V)	Notes
5	3.7	3600	182/4JM	00536ET3E184JM-S	\$1,075	P1S	99	1.15	5.90	88.5	19.409	230/460	9
		3600	182/4JM	00536ET3H184JM-S	\$1,075	P1S	99	1.15	4.70	88.5	19.409	575	9
		3600	182/4JM	00536ET3P184JM-S	\$1,075	P1S	99	1.15	13.6	88.5	19.409	200	9
		3600	182/4JM	00536ET3V184JM-S	\$1,075	P1S	99	1.15	6.80	88.5	19.409	200/400	9
		3600	182/4JM	00536ET3E184JMV-S	\$1,247	P1S	99	1.15	5.90	88.5	20.749	230/460	9;15;51
		3600	182/4JM	00536ET3E184JM-W22	\$1,075	P1	108	1.25	5.90	88.5	17.411	230/460	
		3600	182/4JM	00536ET3H184JM-W22	\$1,075	P1	107	1.25	4.72	88.5	17.411	575	
		1800	182/4JM	00518ET3E184JM-S	\$1,141	P1S	94	1.15	6.50	89.5	19.409	230/460	9
		1800	182/4JM	00518ET3H184JM-S	\$1,141	P1S	94	1.15	5.20	89.5	19.409	575	9
		1800	182/4JM	00518ET3P184JM-S	\$1,141	P1S	94	1.15	14.9	89.5	19.409	200	9
		1800	182/4JM	00518ET3V184JM-S	\$1,141	P1S	94	1.15	7.50	89.5	19.409	200/400	9
		1800	182/4JM	00518ET3E184JMV-S	\$1,199	P1S	94	1.15	6.50	89.5	20.749	230/460	9;15
		1800	182/4JM	00518ET3E184JM-W22	\$1,141	P1	106	1.25	6.45	89.5	17.411	230/460	
		1800	182/4JM	00518ET3H184JM-W22	\$1,141	P1	106	1.25	5.16	89.5	17.411	575	
		1800	182/4JM	00518ET3P184JM-W22	\$1,141	P1	106	1.25	14.8	89.5	17.411	200	
		7.5	5.5	1200	213/5JM	00512ET3E215JM-S	\$1,769	P1S	163	1.15	6.70	89.5	21.220
1200	213/5JM			00512ET3E215JM-W22	\$1,769	P1	180	1.25	6.83	89.5	20.392	230/460	
3600	182/4JM			00736ET3E184JM-S	\$1,313	P1S	102	1.15	8.60	89.5	18.622	230/460	9;12
3600	213/5JM			00736ET3E213JM-S	\$1,419	P1S	152	1.15	8.70	89.5	21.220	230/460	9
3600	182/4JM			00736ET3H184JM-S	\$1,313	P1S	102	1.15	6.90	89.5	18.622	575	9
3600	213/5JM			00736ET3H213JM-S	\$1,419	P1S	152	1.15	6.90	89.5	21.220	575	9
3600	213/5JM			00736ET3V213JM-S	\$1,419	P1S	152	1.15	10.0	89.5	21.220	200/400	9
3600	182/4JM			00736ET3E184JM-W22	\$1,313	P1	108	1.25	8.76	89.5	17.411	230/460	12
3600	182/4JM			00736ET3H184JM-W22	\$1,313	P1	108	1.25	7.01	89.5	17.411	575	12
3600	213/5JM			00736ET3E213JM-W22	\$1,419	P1	168	1.25	8.76	89.5	20.392	230/460	
3600	213/5JM			00736ET3H213JM-W22	\$1,419	P1	163	1.25	7.01	89.5	20.392	575	
1800	213/5JM			00718ET3E213JM-S	\$1,519	P1S	139	1.15	9.10	91.7	20.039	230/460	9
1800	213/5JM			00718ET3H213JM-S	\$1,519	P1S	139	1.15	7.30	91.7	20.039	575	9
1800	213/5JM			00718ET3P213JM-S	\$1,519	P1S	139	1.15	20.8	91.7	20.039	200	9;51
1800	213/5JM			00718ET3V213JM-S	\$1,519	P1S	139	1.15	10.4	91.7	20.039	200/400	9
1800	213/5JM			00718ET3E213JM-W22	\$1,519	P1	180	1.25	9.18	91.7	20.392	230/460	
1800	213/5JM	00718ET3H213JM-W22	\$1,519	P1	179	1.25	7.34	91.7	20.392	575			
1200	254/6JM	00712ET3E254JM-S	\$2,455	P1S	247	1.15	10.0	91.0	24.055	230/460	9		
1200	254/6JM	00712ET3E254JM-W22	\$2,455	P1	319	1.25	9.48	91.0	26.226	230/460			
10	7.5	3600	213/5JM	01036ET3E215JM-S	\$1,769	P1S	179	1.15	11.5	90.2	22.795	230/460	9
		3600	213/5JM	01036ET3H215JM-S	\$1,769	P1S	179	1.15	9.20	90.2	22.795	575	9
		3600	213/5JM	01036ET3V215JM-S	\$1,769	P1S	179	1.15	13.2	90.2	22.795	200/400	9
		3600	213/5JM	01036ET3E215JM-W22	\$1,769	P1	185	1.25	11.6	90.2	20.392	230/460	
		3600	213/5JM	01036ET3H215JM-W22	\$1,769	P1	185	1.25	9.28	90.2	20.392	575	
		1800	213/5JM	01018ET3E215JM-S	\$1,792	P1S	151	1.15	12.2	91.7	20.433	230/460	9
		1800	213/5JM	01018ET3H215JM-S	\$1,792	P1S	151	1.15	9.80	91.7	20.433	575	9
		1800	213/5JM	01018ET3V215JM-S	\$1,792	P1S	151	1.15	14.0	91.7	20.433	200/400	9
		1800	213/5JM	01018ET3E215JM-W22	\$1,792	P1	193	1.25	12.4	91.7	20.392	230/460	
		1800	213/5JM	01018ET3H215JM-W22	\$1,792	P1	193	1.25	9.92	91.7	20.392	575	
		1200	254/6JM	01012ET3E256JM-S	\$2,979	P1S	278	1.15	13.8	91.0	24.843	230/460	9
		1200	254/6JM	01012ET3E256JM-W22	\$2,979	P1	327	1.25	12.9	91.0	26.226	230/460	

continued on next page

Please refer to back cover for description of "NOTES"

For detailed specifications, data sheets, drawings and performance curves visit <http://www.weg.net>

Data subject to change without notice.

Can't find what you are looking for? Call 1-800-ASK-4WEG (275-4934)

CLOSE-COUPLED PUMP TEFC MOTORS

JM - TEFC - Three-Phase - *continued*

HP	kW	RPM	Frame	Catalog Number	List Price	Mult. Symbol	Approx. Shipping Weight (lbs)	Service Factor	FL Amps @ High	FL Eff (%)	"C" Dimension (in)	Voltage (V)	Notes
15	11	3600	213/5JM	01536ET3E215JM-S	\$2,058	P1S	178	1.15	17.0	91.0	22.795	230/460	9;12
		3600	213/5JM	01536ET3H215JM-S	\$2,058	P1S	178	1.15	13.6	91.0	22.795	575	9;12
		3600	213/5JM	01536ET3V215JM-S	\$2,058	P1S	178	1.15	19.5	91.0	22.795	200/400	9;12
		3600	213/5JM	01536ET3E215JM-W22	\$2,058	P1	187	1.25	17.0	91.0	20.392	230/460	12
		3600	213/5JM	01536ET3H215JM-W22	\$2,058	P1	185	1.25	13.8	91.0	20.392	575	12
		3600	254/6JM	01536ET3E254JM-S	\$2,214	P1S	216	1.15	17.4	91.0	24.055	230/460	9;12
		3600	254/6JM	01536ET3H254JM-S	\$2,214	P1S	216	1.15	13.9	91.0	24.055	575	9
		3600	254/6JM	01536ET3V254JM-S	\$2,214	P1S	216	1.15	20.0	91.0	24.055	200/400	9
		3600	254/6JM	01536ET3E254JM-W22	\$2,214	P1	301	1.25	17.2	91.0	26.226	230/460	
		3600	254/6JM	01536ET3H254JM-W22	\$2,214	P1	300	1.25	13.8	91.0	26.226	575	
		1800	254/6JM	01518ET3E254JM-S	\$2,609	P1S	249	1.15	18.2	92.4	24.055	230/460	9
		1800	254/6JM	01518ET3H254JM-S	\$2,609	P1S	249	1.15	14.6	92.4	24.055	575	9
		1800	254/6JM	01518ET3V254JM-S	\$2,609	P1S	249	1.15	20.9	92.4	24.055	200/400	9
		1800	254/6JM	01518ET3E254JM-W22	\$2,609	P1	350	1.25	18.0	92.4	26.226	230/460	
		1800	254/6JM	01518ET3H254JM-W22	\$2,609	P1	349	1.25	14.4	92.4	26.226	575	
1200	284/6JM	01512ET3E284JM-W22	\$3,912	P1	434	1.25	17.9	91.7	28.700	230/460			
20	15	3600	254/6JM	02036ET3E256JM-S	\$2,965	P1S	257	1.15	22.7	91.0	24.843	230/460	9
		3600	254/6JM	02036ET3H256JM-S	\$2,965	P1S	257	1.15	18.2	91.0	24.843	575	9
		3600	254/6JM	02036ET3V256JM-S	\$2,965	P1S	257	1.15	26.1	91.0	24.843	200/400	9
		3600	254/6JM	02036ET3E256JM-W22	\$2,965	P1	327	1.25	23.2	91.0	26.226	230/460	
		3600	254/6JM	02036ET3H256JM-W22	\$2,965	P1	325	1.25	18.6	91.0	26.226	575	
		1800	254/6JM	02018ET3E256JM-S	\$2,857	P1S	279	1.15	24.7	93.0	24.843	230/460	9
		1800	254/6JM	02018ET3H256JM-S	\$2,857	P1S	279	1.15	19.8	92.4	24.843	575	9
		1800	254/6JM	02018ET3V256JM-S	\$2,857	P1S	279	1.15	28.4	93.0	24.843	200/400	9
		1800	254/6JM	02018ET3E256JM-W22	\$2,857	P1	399	1.25	24.1	93.0	26.226	230/460	
		1800	254/6JM	02018ET3H256JM-W22	\$2,857	P1	398	1.25	19.3	93.0	26.226	575	
1200	284/6JM	02012ET3E286JM-W22	\$4,940	P1	461	1.25	24.2	91.7	28.700	230/460			
25	18.5	3600	254/6JM	02536ET3E256JM-S	\$3,231	P1S	267	1.15	28.5	91.7	24.843	230/460	9
		3600	254/6JM	02536ET3H256JM-S	\$3,231	P1S	267	1.15	22.8	91.7	24.843	575	9
		3600	254/6JM	02536ET3V256JM-S	\$3,231	P1S	267	1.15	32.8	91.7	24.843	200/400	9
		3600	254/6JM	02536ET3E256JM-W22	\$3,231	P1	375	1.00	28.1	91.7	26.226	230/460	
		3600	254/6JM	02536ET3H256JM-W22	\$3,231	P1	374	1.00	22.5	91.7	26.226	575	
		3600	284/6JM	02536ET3E284JM-W22	\$3,619	P1	421	1.25	28.5	91.7	28.700	230/460	
		3600	284/6JM	02536ET3H284JM-W22	\$3,619	P1	416	1.25	22.8	91.7	28.700	575	
		1800	284/6JM	02518ET3E284JM-W22	\$3,734	P1	452	1.25	29.5	93.6	28.700	230/460	
		1800	284/6JM	02518ET3H284JM-W22	\$3,734	P1	451	1.25	23.6	93.6	28.700	575	
		1200	324/6JM	02512ET3E324JM-W22	\$5,546	P1	598	1.25	30.4	93.0	29.645	230/460	
30	22	3600	284/6JM	03036ET3E286JM-W22	\$4,539	P1	439	1.25	33.8	91.7	28.700	230/460	
		3600	284/6JM	03036ET3H286JM-W22	\$4,539	P1	439	1.25	27.0	91.7	28.700	575	
		1800	284/6JM	03018ET3E286JM-W22	\$4,096	P1	490	1.25	35.1	93.6	28.700	230/460	
		1800	284/6JM	03018ET3H286JM-W22	\$4,096	P1	490	1.25	28.1	93.6	28.700	575	51
		1200	324/6JM	03012ET3E326JM-W22	\$6,686	P1	636	1.25	36.2	93.0	29.645	230/460	

continued on next page

JM - TEFC - Three-Phase - *continued*

HP	kW	RPM	Frame	Catalog Number	List Price	Mult. Symbol	Approx. Shipping Weight (lbs)	Service Factor	FL Amps @ High	FL. Eff (%)	"C" Dimension (in)	Voltage (V)	Notes
40	30	3600	284/6JM	04036ET3E286JM-W22	\$5,368	P1	469	1.00	45.8	92.4	28.700	230/460	37
		3600	284/6JM	04036ET3H286JM-W22	\$5,368	P1	586	1.00	36.6	92.4	28.700	575	37;51
		3600	324/6JM	04036ET3E324JM-W22	\$5,534	P1	605	1.25	45.8	92.4	29.645	230/460	
		3600	324/6JM	04036ET3H324JM-W22	\$5,534	P1	604	1.25	36.6	92.4	29.645	575	51
		1800	324/6JM	04018ET3E324JM-W22	\$5,316	P1	628	1.25	47.1	94.1	29.645	230/460	
		1800	324/6JM	04018ET3H324JM-W22	\$5,316	P1	621	1.25	37.7	94.1	29.645	575	51
		1200	364/5JM	04012ET3E364JM-W22	\$8,807	P1	1023	1.25	46.5	94.1	33.031	230/460	
50	37	3600	324/6JM	05036ET3E326JM-W22	\$6,622	P1	623	1.25	56.1	93.0	29.645	230/460	
		1800	324/6JM	05018ET3E326JM-W22	\$6,513	P1	651	1.25	59.2	94.5	29.645	230/460	
		1800	324/6JM	05018ET3H326JM-W22	\$6,513	P1	648	1.25	47.4	94.5	29.645	575	
		1200	364/5JM	05012ET3E365JM-W22	\$10,551	P1	1040	1.25	57.4	94.1	33.031	230/460	
60	45	3600	324/6JM	06036ET3E326JM-W22	\$7,699	P1	630	1.00	70.2	93.6	29.645	230/460	37
		3600	364/5JM	06036ET3E364JM-W22	\$8,261	P1	985	1.25	67.0	93.6	33.832	230/460	
		3600	364/5JM	06036ET3H364JM-W22	\$8,261	P1	941	1.25	53.6	93.6	33.832	575	
		1800	364/5JM	06018ET3E364JM-W22	\$8,912	P1	1048	1.25	68.3	95.0	33.031	230/460	
		1800	364/5JM	06018ET3H364JM-W22	\$8,912	P1	1037	1.25	54.6	95.0	33.031	575	
75	55	3600	364/5JM	07536ET3E365JM-W22	\$11,124	P1	989	1.25	81.9	93.6	33.832	230/460	
		3600	364/5JM	07536ET3H365JM-W22	\$11,124	P1	992	1.25	65.5	93.6	33.832	575	
		1800	364/5JM	07518ET3E365JM-W22	\$10,057	P1	1065	1.25	84.1	95.4	33.031	230/460	
		1800	364/5JM	07518ET3H365JM-W22	\$10,057	P1	1039	1.25	67.3	95.4	33.031	575	
100	75	3600	404/5TCZ	10036ET3E405JM-W22	\$13,093	P1	1220	1.25	110	94.1	37.724	230/460	
		3600	404/5TCZ	10036ET3G405JM-W22	\$13,093	P1	1215	1.25	110	94.1	37.724	460	
		1800	404/5TCZ	10018ET3E405JM-W22	\$12,300	P1	1321	1.25	111	95.4	37.724	230/460	
		1800	404/5TCZ	10018ET3G405JM-W22	\$12,300	P1	1318	1.25	111	95.4	37.724	460	

Please refer to back cover for description of "NOTES"

For detailed specifications, data sheets, drawings and performance curves visit <http://www.weg.net>

Data subject to change without notice.

Can't find what you are looking for? Call 1-800-ASK-4WEG (275-4934)

Pump Motors

CLOSE-COUPLED PUMP TEFC MOTORS

JP - TEFC - Three-Phase



HP	kW	RPM	Frame	Catalog Number	List Price	Mult. Symbol	Approx. Shipping Weight (lbs)	Service Factor	FL Amps @ High	FL. Eff (%)	"C" Dimension (in)	Voltage (V)	Notes
1	0.75	1800	143/5JP	00118ET3E143JP-S	\$624	P1S	50	1.15	1.50	85.5	19.173	230/460	9
		1800	143/5JP	00118ET3E143JP-W22	\$624	P1	53	1.25	1.47	85.5	18.736	230/460	
		1200	143/5JP	00112ET3E145JP-S	\$714	P1S	47	1.15	1.60	82.5	19.173	230/460	9
		1200	143/5JP	00112ET3E145JP-W22	\$714	P1	55	1.25	1.73	82.5	18.736	230/460	
1.5	1.1	3600	143/5JP	00156ET3E143JP-S	\$649	P1S	46	1.15	1.90	84.0	18.780	230/460	9
		3600	143/5JP	00156ET3E143JP-W22	\$649	P1	51	1.25	1.96	84.0	18.736	230/460	
		1800	143/5JP	00158ET3E145JP-S	\$653	P1S	52	1.15	2.00	86.5	19.173	230/460	9
		1800	143/5JP	00158ET3E145JP-W22	\$653	P1	58	1.25	2.02	86.5	18.736	230/460	
		1200	182/4JP	00152ET3E182JP-S	\$924	P1S	86	1.15	2.20	87.5	20.906	230/460	9
		1200	182/4JP	00152ET3E182JP-W22	\$924	P1	74	1.25	2.54	87.5	20.475	230/460	
2	1.5	3600	143/5JP	00236ET3E145JP-S	\$694	P1S	52	1.15	2.50	85.5	19.567	230/460	9
		3600	143/5JP	00236ET3E145JP-W22	\$694	P1	59	1.25	2.56	85.5	18.736	230/460	
		1800	143/5JP	00218ET3E145JP-S	\$718	P1S	55	1.15	2.70	86.5	19.567	230/460	9
		1800	143/5JP	00218ET3E145JP-W22	\$718	P1	59	1.25	2.76	86.5	18.736	230/460	
		1200	182/4JP	00212ET3E184JP-S	\$1,040	P1S	100	1.15	3.00	88.5	21.693	230/460	9
		1200	182/4JP	00212ET3E184JP-W22	\$1,040	P1	91	1.25	3.23	88.5	20.475	230/460	
3	2.2	3600	143/5JP	00336ET3E145JP-S	\$915	P1S	61	1.15	3.50	86.5	20.748	230/460	9;12
		3600	143/5JP	00336ET3E145JP-W22	\$915	P1	61	1.25	3.71	86.5	18.736	230/460	12
		3600	182/4JP	00336ET3E182JP-S	\$933	P1S	88	1.15	3.70	86.5	20.906	230/460	9
		3600	182/4JP	00336ET3E182JP-W22	\$933	P1	111	1.25	3.63	86.5	20.475	230/460	
		3600	182/4JP	00336ET3H182JP-W22	\$933	P1	103	1.25	2.90	86.5	20.475	575	
		1800	182/4JP	00318ET3E182JP-S	\$1,041	P1S	108	1.15	3.80	89.5	22.480	230/460	9
		1800	182/4JP	00318ET3H182JP-S	\$1,041	P1S	108	1.15	3.10	89.5	22.480	575	9
		1800	182/4JP	00318ET3E182JP-W22	\$1,041	P1	107	1.25	3.91	89.5	20.475	230/460	
		1800	182/4JP	00318ET3H182JP-W22	\$1,041	P1	100	1.25	3.13	89.5	20.475	575	51
		1200	213/5JP	00312ET3E213JP-S	\$1,449	P1S	152	1.15	4.20	89.5	24.291	230/460	9,51
1200	213/5JP	00312ET3E213JP-W22	\$1,449	P1	126	1.25	4.41	89.5	24.264	230/460			
5	3.7	3600	182/4JP	00536ET3E184JP-S	\$1,094	P1S	106	1.15	5.90	88.5	22.480	230/460	9
		3600	182/4JP	00536ET3E184JP-W22	\$1,094	P1	118	1.25	5.90	88.5	20.475	230/460	
		3600	182/4JP	00536ET3H184JP-W22	\$1,094	P1	113	1.25	4.72	88.5	20.475	575	
		1800	182/4JP	00518ET3E184JP-S	\$1,161	P1S	105	1.15	6.50	89.5	22.480	230/460	9
		1800	182/4JP	00518ET3H184JP-S	\$1,161	P1S	105	1.15	5.20	89.5	22.480	575	9
		1800	182/4JP	00518ET3E184JP-W22	\$1,161	P1	117	1.25	6.45	89.5	20.475	230/460	
		1800	182/4JP	00518ET3H184JP-W22	\$1,161	P1	116	1.25	5.16	89.5	20.475	575	51
		1200	213/5JP	00512ET3E215JP-S	\$1,801	P1S	171	1.15	6.70	89.5	25.079	230/460	9,51
		1200	213/5JP	00512ET3E215JP-W22	\$1,801	P1	193	1.25	6.83	89.5	24.264	230/460	

continued on next page

JP - TEFC - Three-Phase - continued

HP	kW	RPM	Frame	Catalog Number	List Price	Mult. Symbol	Approx. Shipping Weight (lbs)	Service Factor	FL Amps @ High	FL Eff (%)	"C" Dimension (in)	Voltage (V)	Notes
7.5	5.5	3600	182/4JP	00736ET3E184JP-S	\$1,339	P1S	109	1.15	8.60	89.5	21.693	230/460	9;12
		3600	182/4JP	00736ET3E184JP-W22	\$1,339	P1	118	1.25	8.76	89.5	20.475	230/460	12
		3600	213/5JP	00736ET3E213JP-S	\$1,445	P1S	161	1.15	8.70	89.5	25.079	230/460	9,51
		3600	213/5JP	00736ET3H213JP-S	\$1,445	P1S	161	1.15	6.90	89.5	25.079	575	9
		3600	213/5JP	00736ET3E213JP-W22	\$1,445	P1	177	1.25	8.76	89.5	24.264	230/460	
		3600	213/5JP	00736ET3H213JP-W22	\$1,445	P1	168	1.25	7.01	89.5	24.264	575	51
		1800	213/5JP	00718ET3E213JP-S	\$1,543	P1S	148	1.15	9.10	91.7	23.898	230/460	9
		1800	213/5JP	00718ET3H213JP-S	\$1,543	P1S	148	1.15	7.30	91.7	23.898	575	9,51
		1800	213/5JP	00718ET3V213JP-S	\$1,543	P1S	148	1.15	10.4	91.7	23.898	200/400	9,51
		1800	213/5JP	00718ET3E213JP-W22	\$1,543	P1	189	1.25	9.18	91.7	24.264	230/460	
		1800	213/5JP	00718ET3H213JP-W22	\$1,543	P1	188	1.25	7.34	91.7	24.264	575	
		1200	254/6JP	00712ET3E254JP-S	\$2,495	P1S	256	1.15	10.0	91.0	26.929	230/460	9,51
1200	254/6JP	00712ET3E254JP-W22	\$2,495	P1	323	1.25	9.48	91.0	29.106	230/460			
10	7.5	3600	213/5JP	01036ET3E215JP-S	\$1,801	P1S	184	1.15	11.5	90.2	26.654	230/460	9
		3600	213/5JP	01036ET3H215JP-S	\$1,801	P1S	184	1.15	9.20	90.2	26.654	575	9
		3600	213/5JP	01036ET3E215JP-W22	\$1,801	P1	195	1.25	11.6	90.2	24.264	230/460	
		3600	213/5JP	01036ET3H215JP-W22	\$1,801	P1	191	1.25	9.28	90.2	24.264	575	
		1800	213/5JP	01018ET3E215JP-S	\$1,823	P1S	160	1.15	12.2	91.7	24.291	230/460	9
		1800	213/5JP	01018ET3H215JP-S	\$1,823	P1S	160	1.15	9.80	91.7	24.291	575	9
		1800	213/5JP	01018ET3V215JP-S	\$1,823	P1S	160	1.15	14.0	91.7	24.291	200/400	9,51
		1800	213/5JP	01018ET3E215JP-W22	\$1,823	P1	203	1.25	12.4	91.7	24.264	230/460	
		1800	213/5JP	01018ET3H215JP-W22	\$1,823	P1	202	1.25	9.92	91.7	24.264	575	
		1200	254/6JP	01012ET3E256JP-S	\$3,103	P1S	287	1.15	13.8	91.0	27.717	230/460	9
1200	254/6JP	01012ET3E256JP-W22	\$3,103	P1	326	1.25	12.9	91.0	29.106	230/460			
15	11	3600	213/5JP	01536ET3E215JP-S	\$2,099	P1S	179	1.15	17.0	91.0	26.654	230/460	9;12
		3600	213/5JP	01536ET3H215JP-S	\$2,099	P1S	179	1.15	13.6	91.0	26.654	575	9;12
		3600	213/5JP	01536ET3E215JP-W22	\$2,099	P1	194	1.25	17.0	91.0	24.264	230/460	12
		3600	254/6JP	01536ET3E254JP-S	\$2,629	P1S	217	1.15	17.4	91.0	26.929	230/460	9
		3600	254/6JP	01536ET3V254JP-S	\$2,629	P1S	217	1.15	20.0	91.0	26.929	200/400	9
		3600	254/6JP	01536ET3E254JP-W22	\$2,629	P1	305	1.25	17.2	91.0	29.106	230/460	
		3600	254/6JP	01536ET3H254JP-W22	\$2,629	P1	302	1.25	13.8	91.0	29.106	575	
		1800	254/6JP	01518ET3E254JP-S	\$2,653	P1S	251	1.15	18.2	92.4	26.929	230/460	9
		1800	254/6JP	01518ET3H254JP-S	\$2,653	P1S	251	1.15	14.6	92.4	26.929	575	9,51
		1800	254/6JP	01518ET3V254JP-S	\$2,653	P1S	251	1.15	20.9	92.4	26.929	200/400	9
		1800	254/6JP	01518ET3E254JP-W22	\$2,653	P1	353	1.25	18.0	92.4	29.106	230/460	
		1800	254/6JP	01518ET3H254JP-W22	\$2,653	P1	353	1.25	14.4	92.4	29.106	575	
		1200	284/6JP	01512ET3E284JP-W22	\$3,972	P1	436	1.25	17.9	91.7	31.575	230/460	

continued on next page

Please refer to back cover for description of "NOTES"

For detailed specifications, data sheets, drawings and performance curves visit <http://www.weg.net>

Data subject to change without notice.

CLOSE-COUPLED PUMP TEFC MOTORS

JP - TEFC - Three-Phase - continued

HP	kW	RPM	Frame	Catalog Number	List Price	Mult. Symbol	Approx. Shipping Weight (lbs)	Service Factor	FL Amps @ High	FL. Eff (%)	"C" Dimension (in)	Voltage (V)	Notes
20	15	3600	254/6JP	02036ET3E256JP-S	\$3,018	P1S	258	1.15	22.7	91.0	27.717	230/460	9
		3600	254/6JP	02036ET3H256JP-S	\$3,018	P1S	258	1.15	18.2	91.0	27.717	575	9
		3600	254/6JP	02036ET3E256JP-W22	\$3,018	P1	330	1.25	23.2	91.0	29.106	230/460	
		3600	254/6JP	02036ET3H256JP-W22	\$3,018	P1	327	1.25	18.6	91.0	29.106	575	
		1800	254/6JP	02018ET3E256JP-S	\$2,908	P1S	281	1.15	24.7	92.4	27.717	230/460	9
		1800	254/6JP	02018ET3H256JP-S	\$2,908	P1S	281	1.15	19.8	93.0	27.717	575	9
		1800	254/6JP	02018ET3V256JP-S	\$2,908	P1S	281	1.15	28.4	93.0	27.717	200/400	9
		1800	254/6JP	02018ET3E256JP-W22	\$2,908	P1	404	1.25	24.1	93.0	29.106	230/460	
		1800	254/6JP	02018ET3H256JP-W22	\$2,908	P1	401	1.25	19.3	93.0	29.106	575	51
		1200	284/6JP	02012ET3E286JP-W22	\$5,015	P1	463	1.25	24.2	91.7	31.575	230/460	
25	18.5	3600	254/6JP	02536ET3E256JP-S	\$3,296	P1S	269	1.15	28.5	91.7	27.717	230/460	9
		3600	254/6JP	02536ET3H256JP-S	\$3,296	P1S	269	1.15	22.8	91.7	27.717	575	9,51
		3600	254/6JP	02536ET3E256JP-W22	\$3,296	P1	378	1.00	28.1	91.7	29.106	230/460	
		3600	254/6JP	02536ET3H256JP-W22	\$3,296	P1	399	1.00	22.5	91.7	29.106	575	
		3600	284/6JP	02536ET3E284JP-W22	\$3,679	P1	422	1.25	28.5	91.7	31.575	230/460	
		3600	284/6JP	02536ET3H284JP-W22	\$3,679	P1	421	1.25	22.8	91.7	31.575	575	51
		1800	284/6JP	02518ET3E284JP-W22	\$3,797	P1	454	1.25	29.5	93.6	31.575	230/460	
		1800	284/6JP	02518ET3H284JP-W22	\$3,797	P1	453	1.25	23.6	93.6	31.575	575	
		1200	324/6JP	02512ET3E324JP-W22	\$5,972	P1	535	1.25	30.4	93.0	34.021	230/460	
30	22	3600	284/6JP	03036ET3E286JP-W22	\$4,614	P1	441	1.25	33.8	91.7	31.575	230/460	
		3600	284/6JP	03036ET3H286JP-W22	\$4,614	P1	463	1.25	27.0	91.7	31.575	575	
		1800	284/6JP	03018ET3E286JP-W22	\$4,167	P1	492	1.25	35.1	93.6	31.575	230/460	
		1800	284/6JP	03018ET3H286JP-W22	\$4,167	P1	490	1.25	28.1	93.6	31.575	575	
		1200	324/6JP	03012ET3E326JP-W22	\$6,690	P1	639	1.25	36.2	93.0	34.021	230/460	
40	30	3600	284/6JP	04036ET3E286JP-W22	\$5,475	P1	471	1.00	45.8	92.4	31.575	230/460	37
		3600	284/6JP	04036ET3H286JP-W22	\$5,475	P1	617	1.00	36.6	92.4	31.575	575	37
		3600	324/6JP	04036ET3E324JP-W22	\$5,628	P1	602	1.25	45.8	92.4	34.021	230/460	
		3600	324/6JP	04036ET3H324JP-W22	\$5,628	P1	579	1.25	36.6	92.4	34.021	575	
		1800	324/6JP	04018ET3E324JP-W22	\$5,413	P1	625	1.25	47.1	94.1	34.021	230/460	
		1800	324/6JP	04018ET3H324JP-W22	\$5,413	P1	608	1.25	37.7	94.1	34.021	575	
		1200	364/5JP	04012ET3E364JP-W22	\$9,268	P1	1003	1.25	46.5	94.1	35.916	230/460	
50	37	3600	324/6JP	05036ET3E326JP-W22	\$6,733	P1	624	1.25	56.1	93.0	34.021	230/460	
		3600	324/6JP	05036ET3H326JP-W22	\$6,733	P1	622	1.25	44.9	93.0	34.021	575	
		1800	324/6JP	05018ET3E326JP-W22	\$6,624	P1	648	1.25	59.2	94.5	34.021	230/460	
		1800	324/6JP	05018ET3H326JP-W22	\$6,624	P1	645	1.25	47.4	94.5	34.021	575	51
		1200	364/5JP	05012ET3E365JP-W22	\$10,748	P1	983	1.25	57.4	94.1	35.916	230/460	51
60	45	3600	324/6JP	06036ET3E326JP-W22	\$7,853	P1	627	1.00	70.2	93.6	34.021	230/460	37
		3600	364/5JP	06036ET3E364JP-W22	\$10,252	P1	994	1.25	67.0	93.6	36.711	230/460	
		3600	364/5JP	06036ET3H364JP-W22	\$10,252	P1	946	1.25	53.6	93.6	36.711	575	
		1800	364/5JP	06018ET3E364JP-W22	\$9,619	P1	1056	1.25	68.3	95.0	35.916	230/460	
		1800	364/5JP	06018ET3H364JP-W22	\$9,619	P1	1042	1.25	54.6	95.0	35.916	575	
		1200	404/5JP	06012ET3E404JP-W22	\$12,444	P1	1156	1.25	69.5	94.5	38.911	230/460	

continued on next page

Please refer to back cover for description of "NOTES"

For detailed specifications, data sheets, drawings and performance curves visit <http://www.weg.net>

JP - TEFC - Three-Phase - *continued*

HP	kW	RPM	Frame	Catalog Number	List Price	Mult. Symbol	Approx. Shipping Weight (lbs)	Service Factor	FL Amps @ High	FL. Eff (%)	"C" Dimension (in)	Voltage (V)	Notes
75	55	3600	364/5JP	07536ET3E365JP-W22	\$11,321	P1	997	1.25	81.9	93.6	36.711	230/460	
		3600	364/5JP	07536ET3G365JP-W22	\$11,321	P1	1153	1.25	81.9	93.6	36.711	460	
		3600	364/5JP	07536ET3H365JP-W22	\$11,321	P1	997	1.25	65.5	93.6	36.711	575	
		1800	364/5JP	07518ET3E365JP-W22	\$10,235	P1	1075	1.25	84.1	95.4	35.916	230/460	
		1800	364/5JP	07518ET3H365JP-W22	\$10,235	P1	1044	1.25	67.3	95.4	35.916	575	
		1200	404/5JP	07512ET3E405JP-W22	\$14,005	P1	1209	1.25	84.9	94.5	38.911	230/460	
100	75	3600	404/5JP	10036ET3E405JP-W22	\$13,949	P1	1203	1.25	110	94.1	40.551	230/460	
		3600	404/5JP	10036ET3G405JP-W22	\$13,949	P1	1222	1.25	110	94.1	40.551	460	
		1800	404/5JP	10018ET3E405JP-W22	\$12,411	P1	1291	1.25	111	95.4	38.911	230/460	
		1800	404/5JP	10018ET3G405JP-W22	\$12,411	P1	1294	1.25	111	95.4	38.911	460	

JP - TEFC - Explosion Proof

HP	kW	RPM	Frame	Catalog Number	List Price	Mult. Symbol	Approx. Shipping Weight (lbs)	Service Factor	FL Amps @ High	FL. Eff (%)	"C" Dimension (in)	Voltage (V)	Notes
3	2.2	1800	182/4JP	00318XT3E182JP	\$1,586	XT	119	1.15	3.91	89.5	20.431	230/460	
		1800	182/4JP	00318XT3H182JP	\$1,586	XT	119	1.15	3.13	89.5	20.431	575	
5	3.7	1800	182/4JP	00518XT3E184JP	\$1,609	XT	136	1.15	6.57	89.5	20.306	230/460	39, 51
		1800	182/4JP	00518XT3H184JP	\$1,609	XT	136	1.15	5.26	89.5	20.306	575	39, 51

Please refer to back cover for description of "NOTES"

For detailed specifications, data sheets, drawings and performance curves visit <http://www.weg.net>

Data subject to change without notice.

Can't find what you are looking for? Call 1-800-ASK-4WEG (275-4934)

Pump Motors



CLOSE-COUPLED PUMP ODP MOTORS



JM - ODP - Single Phase

HP	kW	RPM	Frame	Catalog Number	List Price	Mult. Symbol	Approx. Shipping Weight (lbs)	Service Factor	FL Amps @ High	FL. Eff (%)	"C" Dimension (in)	Voltage (V)	Notes
3	2.2	3600	182/4JM	003360S1B182JM	\$977	P1CS	111	1.25	11.7	86.0	18.976	115/208-230	9
5	3.7	3600	182/4JM	005360S1B184JM	\$1,383	P1CS	123	1.25	19.0	88.0	18.976	115/208-230	9
7.5	5.5	3600	213/5JM	007360S1C213JM	\$1,567	P1CS	132	1.15	30.2	85.5	18.667	208-230	9
10	7.5	3600	213/5JM	010360S1C215JM	\$2,067	P1CS	132	1.15	42.0	84.0	20.499	208-230	9



JP - ODP - Single Phase

HP	kW	RPM	Frame	Catalog Number	List Price	Mult. Symbol	Approx. Shipping Weight (lbs)	Service Factor	FL Amps @ High	FL. Eff (%)	"C" Dimension (in)	Voltage (V)	Notes
3	2.2	3600	182/4JP	003360S1B182JP	\$977	P1CS	117	1.25	11.7	86.0	21.942	115/208-230	9
5	3.7	3600	182/4JP	005360S1B184JP	\$1,383	P1CS	127	1.25	19.0	88.0	21.942	115/208-230	9
7.5	5.5	3600	213/5JP	007360S1C213JP	\$1,567	P1CS	142	1.15	30.2	85.5	22.558	208-230	9
10	7.5	3600	213/5JP	010360S1C215JP	\$2,067	P1CS	138	1.15	42.0	84.0	24.390	208-230	9



JM - ODP - Three Phase

HP	kW	RPM	Frame	Catalog Number	List Price	Mult. Symbol	Approx. Shipping Weight (lbs)	Service Factor	FL Amps @ High	FL. Eff (%)	"C" Dimension (in)	Voltage (V)	Notes
1	0.75	1800	143/5JM	001180T3E143JM-S	\$486	P1S	40	1.15	1.50	85.5	13.701	230/460	9
		1800	143/5JM	001180T3H143JM-S	\$486	P1S	40	1.15	1.20	85.5	13.701	575	9
		1800	143/5JM	001180T3V143JM-S	\$486	P1S	40	1.15	1.70	85.5	13.701	200/400	9
		1200	143/5JM	001120T3E145JM-S	\$550	P1S	40	1.15	1.70	82.5	13.701	230/460	9
1.5	1.1	3600	143/5JM	001560T3E143JM-S	\$534	P1S	35	1.15	1.90	84.0	13.701	230/460	9
		3600	143/5JM	001560T3V143JM-S	\$534	P1S	35	1.15	2.10	84.0	13.701	200/400	9
		1800	143/5JM	001580T3E145JM-S	\$553	P1S	47	1.15	2.10	86.5	14.882	230/460	9
		1800	143/5JM	001580T3H145JM-S	\$553	P1S	47	1.15	1.70	86.5	14.882	575	9
		1800	143/5JM	001580T3V145JM-S	\$553	P1S	47	1.15	2.40	86.5	14.882	200/400	9
		1200	182/4JM	001520T3E182JM-S	\$769	P1S	71	1.15	2.30	86.5	15.472	230/460	9
2	1.5	3600	143/5JM	002360T3E145JM-S	\$580	P1S	42	1.15	2.40	85.5	14.094	230/460	9
		3600	143/5JM	002360T3H145JM-S	\$580	P1S	42	1.15	1.90	85.5	14.094	575	9
		3600	143/5JM	002360T3V145JM-S	\$580	P1S	42	1.15	2.80	85.5	14.094	200/400	9
		1800	143/5JM	002180T3E145JM-S	\$607	P1S	44	1.15	2.70	86.5	14.882	230/460	9
		1800	143/5JM	002180T3H145JM-S	\$607	P1S	44	1.15	2.20	86.5	14.882	575	9
		1800	143/5JM	002180T3V145JM-S	\$607	P1S	44	1.15	3.10	86.5	14.882	200/400	9
		1200	182/4JM	002120T3E184JM-S	\$816	P1S	83	1.15	3.00	87.5	16.260	230/460	9
3	2.2	3600	143/5JM	003360T3E145JM-S	\$660	P1S	45	1.15	3.60	85.5	14.488	230/460	9
		3600	143/5JM	003360T3H145JM-S	\$660	P1S	45	1.15	2.90	85.5	14.488	575	9
		3600	143/5JM	003360T3V145JM-S	\$660	P1S	45	1.15	4.10	85.5	14.488	200/400	9
		1800	182/4JM	003180T3E182JM-S	\$665	P1S	84	1.15	3.90	89.5	16.654	230/460	9
		1800	182/4JM	003180T3H182JM-S	\$665	P1S	84	1.15	3.10	89.5	16.654	575	9
		1800	182/4JM	003180T3V182JM-S	\$665	P1S	84	1.15	4.40	89.5	16.654	200/400	9
		1200	213/5JM	003120T3E213JM-S	\$1,105	P1S	123	1.15	4.20	88.5	17.717	230/460	9
5	3.7	3600	182/4JM	005360T3E182JM-S	\$780	P1S	70	1.15	6.10	86.5	16.260	230/460	9
		3600	182/4JM	005360T3H182JM-S	\$780	P1S	70	1.15	4.90	86.5	16.260	575	9
		3600	182/4JM	005360T3V182JM-S	\$780	P1S	70	1.15	7.00	86.5	16.260	200/400	9
		1800	182/4JM	005180T3E184JM-S	\$849	P1S	96	1.15	6.30	89.5	17.835	230/460	9
		1800	182/4JM	005180T3H184JM-S	\$849	P1S	96	1.15	5.10	89.5	17.835	575	9
		1800	182/4JM	005180T3V184JM-S	\$849	P1S	96	1.15	7.30	89.5	17.835	200/400	9
		1200	213/5JM	005120T3E215JM-S	\$1,319	P1S	144	1.15	6.70	89.5	18.110	230/460	9
7.5	5.5	3600	182/4JM	007360T3E184JM-S	\$1,086	P1S	87	1.15	8.70	88.5	16.654	230/460	9
		3600	182/4JM	007360T3H184JM-S	\$1,086	P1S	87	1.15	6.90	88.5	16.654	575	9
		3600	182/4JM	007360T3V184JM-S	\$1,086	P1S	87	1.15	10.0	88.5	16.654	200/400	9
		1800	213/5JM	007180T3E213JM-S	\$1,119	P1S	135	1.15	9.30	91.0	17.717	230/460	9
		1800	213/5JM	007180T3H213JM-S	\$1,120	P1S	135	1.15	7.40	91.0	17.717	575	9;51
		1800	213/5JM	007180T3V213JM-S	\$1,119	P1S	135	1.15	10.6	91.0	17.717	200/400	9
		1200	254/6JM	007120T3E254JM-S	\$1,985	P1S	224	1.15	10.2	90.2	21.969	230/460	9
		1200	254JM	007120T3E254JM-W40	\$1,985	P1C	243	1.25	9.94	90.2	22.517	230/460	

continued on next page

Please refer to back cover for description of "NOTES"

For detailed specifications, data sheets, drawings and performance curves visit <http://www.weg.net>

Data subject to change without notice.

CLOSE-COUPLED PUMP ODP MOTORS

JM - ODP - Three Phase - *continued*

HP	kW	RPM	Frame	Catalog Number	List Price	Mult. Symbol	Approx. Shipping Weight (lbs)	Service Factor	FL Amps @ High	FL Eff (%)	"C" Dimension (in)	Voltage (V)	Notes
10	7.5	3600	213/5JM	010360T3E213JM-S	\$1,289	P1S	132	1.15	12.0	89.5	18.110	230/460	9
		3600	213/5JM	010360T3H213JM-S	\$1,289	P1S	132	1.15	9.60	89.5	18.110	575	9
		3600	213/5JM	010360T3V213JM-S	\$1,289	P1S	132	1.15	13.8	89.5	18.110	200/400	9
		1800	213/5JM	010180T3E215JM-S	\$1,364	P1S	140	1.15	12.4	91.7	17.717	230/460	9
		1800	213/5JM	010180T3H215JM-S	\$1,366	P1S	140	1.15	9.90	91.7	17.717	575	9
		1200	254/6JM	010120T3E256JM-S	\$2,298	P1S	252	1.15	13.9	91.7	21.969	230/460	9
		1200	254/6JM	010120T3E256JM-W40	\$2,298	P1C	271	1.25	12.8	91.7	24.264	230/460	
15	11	3600	213/5JM	015360T3E215JM-S	\$1,707	P1S	151	1.15	17.2	90.2	18.898	230/460	9
		3600	213/5JM	015360T3H215JM-S	\$1,707	P1S	151	1.15	13.8	90.2	18.898	575	9
		3600	213/5JM	015360T3V215JM-S	\$1,707	P1S	151	1.15	19.8	90.2	18.898	200/400	9
		1800	254/6JM	015180T3E254JM-S	\$1,995	P1S	225	1.15	18.6	93.0	21.969	230/460	9
		1800	254/6JM	015180T3H254JM-S	\$1,995	P1S	225	1.15	14.9	93.0	21.969	575	9
		1800	254/6JM	015180T3V254JM-S	\$1,995	P1S	225	1.15	21.4	93.0	21.969	200/400	9
		1800	254JM	015180T3E254JM-W40	\$1,995	P1C	291	1.25	17.5	93.0	22.517	230/460	
		1800	254JM	015180T3H254JM-W40	\$1,995	P1C	290	1.25	14.0	93.0	22.517	575	
		1800	254JM	015180T3V254JM-W40	\$1,995	P1C	273	1.25	20.1	93.0	22.517	200/400	
20	15	1200	284JM	015120T3E284JM-W40	\$3,164	P1C	355	1.25	18.4	91.7	24.033	230/460	
		3600	254/6JM	020360T3E254JM-S	\$2,107	P1S	206	1.15	23.8	91.0	21.969	230/460	9
		3600	254/6JM	020360T3H254JM-S	\$2,107	P1S	206	1.15	19.0	91.0	21.969	575	9
		3600	254/6JM	020360T3V254JM-S	\$2,107	P1S	206	1.15	27.4	91.0	21.969	200/400	9
		3600	254JM	020360T3E254JM-W40	\$2,107	P1C	237	1.25	24.3	91.0	22.517	230/460	
		3600	254JM	020360T3H254JM-W40	\$2,107	P1C	236	1.25	19.4	91.0	22.517	575	
		3600	254JM	020360T3V254JM-W40	\$2,107	P1C	236	1.25	28.0	91.0	22.517	200/400	
		1800	254/6JM	020180T3E256JM-S	\$2,413	P1S	250	1.15	25.0	93.0	21.969	230/460	9
		1800	254/6JM	020180T3H256JM-S	\$2,413	P1S	250	1.15	20.0	93.0	21.969	575	9
		1800	254/6JM	020180T3E256JM-W40	\$2,413	P1C	326	1.25	24.1	93.0	24.264	230/460	
		1800	254/6JM	020180T3H256JM-W40	\$2,413	P1C	326	1.25	19.3	93.0	24.264	575	
25	18.5	1200	284/6JM	020120T3E286JM-W40	\$3,872	P1C	430	1.25	24.3	92.4	25.533	230/460	
		3600	254/6JM	025360T3E256JM-S	\$2,598	P1S	217	1.15	29.1	91.7	21.969	230/460	9
		3600	254/6JM	025360T3H256JM-S	\$2,598	P1S	217	1.15	23.3	91.7	21.969	575	9
		3600	254/6JM	025360T3E256JM-W40	\$2,598	P1C	266	1.25	28.8	91.7	24.264	230/460	
		3600	254/6JM	025360T3H256JM-W40	\$2,598	P1C	263	1.25	23.0	91.7	24.264	575	
		1800	284JM	025180T3E284JM-W40	\$2,912	P1C	397	1.25	29.5	93.6	24.033	230/460	
		1800	284JM	025180T3H284JM-W40	\$2,912	P1C	400	1.25	23.6	93.6	24.033	575	
30	22	1200	324JM	025120T3E324JM-W40	\$4,306	P1C	514	1.25	30.8	93.0	26.057	230/460	
		3600	284JM	030360T3E284JM-W40	\$3,185	P1C	350	1.25	35.0	91.7	24.033	230/460	
		3600	284JM	030360T3H284JM-W40	\$3,185	P1C	373	1.25	28.0	91.7	24.033	575	
		3600	284JM	030360T3V284JM-W40	\$3,185	P1C	373	1.25	40.3	91.7	24.033	200/400	
		1800	284/6JM	030180T3E286JM-W40	\$3,368	P1C	443	1.25	34.9	94.1	25.533	230/460	
		1800	284/6JM	030180T3H286JM-W40	\$3,368	P1C	452	1.25	27.9	94.1	25.533	575	
1200	324/6JM	030120T3E326JM-W40	\$4,741	P1C	561	1.25	36.0	93.6	27.557	230/460			

continued on next page

JM - ODP - Three Phase - continued

HP	kW	RPM	Frame	Catalog Number	List Price	Mult. Symbol	Approx. Shipping Weight (lbs)	Service Factor	FL Amps @ High	FL. Eff (%)	"C" Dimension (in)	Voltage (V)	Notes
40	30	3600	284/6JM	040360T3E286JM-W40	\$3,811	P1C	394	1.25	46.8	92.4	25.533	230/460	
		3600	284/6JM	040360T3H286JM-W40	\$3,811	P1C	411	1.25	37.4	92.4	25.533	575	
		1800	324JM	040180T3E324JM-W40	\$3,797	P1C	494	1.25	47.6	94.1	26.057	230/460	
		1800	324JM	040180T3H324JM-W40	\$3,797	P1C	520	1.25	38.1	94.1	26.057	575	
		1200	364/5JM	040120T3E364JM-W40	\$6,696	P1C	849	1.25	47.1	94.1	29.270	230/460	
50	37	3600	324JM	050360T3E324JM-W40	\$4,607	P1C	474	1.25	58.7	93.0	26.057	230/460	
		3600	324JM	050360T3G324JM-W40	\$4,607	P1C	522	1.25	58.7	93.0	26.057	460	
		3600	324JM	050360T3H324JM-W40	\$4,607	P1C	523	1.25	47.0	93.0	26.057	575	
		1800	324/6JM	050180T3E326JM-W40	\$4,877	P1C	557	1.25	58.5	94.5	27.557	230/460	
		1800	324/6JM	050180T3H326JM-W40	\$4,877	P1C	596	1.25	46.8	94.5	27.557	575	
		1200	364/5JM	050120T3E365JM-W40	\$7,666	P1C	884	1.25	58.1	94.1	29.270	230/460	
60	45	3600	324/6JM	060360T3E326JM-W40	\$5,432	P1C	519	1.25	71.0	93.6	27.557	230/460	
		3600	324/6JM	060360T3G326JM-W40	\$5,432	P1C	517	1.25	71.0	93.6	27.557	460	
		3600	324/6JM	060360T3H326JM-W40	\$5,432	P1C	564	1.25	56.8	93.6	27.557	575	
		1800	364/5JM	060180T3E364JM-W40	\$5,994	P1C	876	1.25	69.9	95.0	29.270	230/460	51
		1800	364/5JM	060180T3G364JM-W40	\$5,994	P1C	847	1.25	69.9	95.0	29.270	460	
		1800	364/5JM	060180T3H364JM-W40	\$5,994	P1C	847	1.25	55.9	95.0	29.270	575	
75	55	3600	364/5JM	075360T3E364JM-W40	\$6,951	P1C	815	1.25	84.8	93.6	29.270	230/460	
		3600	364/5JM	075360T3G364JM-W40	\$6,951	P1C	794	1.25	84.8	93.6	29.270	460	
		3600	364/5JM	075360T3H364JM-W40	\$6,951	P1C	794	1.25	67.8	93.6	29.270	575	
		1800	364/5JM	075180T3E365JM-W40	\$6,932	P1C	875	1.25	85.5	95.0	29.270	230/460	
		1800	364/5JM	075180T3G365JM-W40	\$6,932	P1C	875	1.25	85.5	95.0	29.270	460	
		1800	364/5JM	075180T3H365JM-W40	\$6,932	P1C	875	1.25	68.4	95.0	29.270	575	
100	75	3600	364/5JM	100360T3E365JM-W40	\$8,683	P1C	835	1.25	116	93.6	29.270	230/460	
		3600	364/5JM	100360T3G365JM-W40	\$8,683	P1C	865	1.25	116	93.6	29.270	460	

Please refer to back cover for description of "NOTES"

For detailed specifications, data sheets, drawings and performance curves visit <http://www.weg.net>

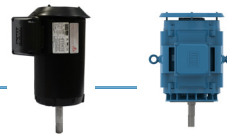
Data subject to change without notice.

Can't find what you are looking for? Call 1-800-ASK-4WEG (275-4934)

Pump Motors

CLOSE-COUPLED PUMP ODP MOTORS

JM - ODP - Three Phase - Footless Vertical



HP	kW	RPM	Frame	Catalog Number	List Price	Mult. Symbol	Approx. Shipping Weight (lbs)	Service Factor	FL Amps @ High	FL. Eff (%)	"C" Dimension (in)	Voltage (V)	Notes
1	0.75	1800	143/5JM	001180T3E143JMV-S	\$541	P1S	40	1.15	1.50	85.5	15.001	230/460	9;15
		1200	143/5JM	001120T3E145JMV-S	\$605	P1S	40	1.15	1.70	82.5	15.001	230/460	9;15
1.5	1.1	3600	143/5JM	001560T3E143JMV-S	\$589	P1S	35	1.15	1.90	84.0	15.001	230/460	9;15
		1800	143/5JM	001580T3E145JMV-S	\$608	P1S	47	1.15	2.10	86.5	16.182	230/460	9;15
2	1.5	1200	182/4JM	001520T3E182JMV-S	\$827	P1S	71	1.15	2.30	86.5	16.812	230/460	9;15
		3600	143/5JM	002360T3E145JMV-S	\$635	P1S	42	1.15	2.40	85.5	15.394	230/460	9;15
		1800	143/5JM	002180T3E145JMV-S	\$662	P1S	44	1.15	2.70	86.5	16.182	230/460	9;15
3	2.2	1200	182/4JM	002120T3E184JMV-S	\$874	P1S	83	1.15	3.00	87.5	17.600	230/460	9;15
		3600	143/5JM	003360T3E145JMV-S	\$715	P1S	45	1.15	3.60	85.5	15.788	230/460	9;15
		1800	182/4JM	003180T3E182JMV-S	\$723	P1S	84	1.15	3.90	89.5	17.994	230/460	9;15
5	3.7	1200	213/5JM	003120T3E213JMV-S	\$1,187	P1S	123	1.15	4.20	88.5	18.977	230/460	9;15
		3600	182/4JM	005360T3E182JMV-S	\$838	P1S	75	1.15	6.10	86.5	17.600	230/460	9;15
		1800	182/4JM	005180T3E184JMV-S	\$907	P1S	96	1.15	6.30	89.5	19.175	230/460	9;15
7.5	5.5	1200	213/5JM	005120T3E215JMV-S	\$1,401	P1S	144	1.15	6.70	89.5	19.370	230/460	9;15
		3600	182/4JM	007360T3E184JMV-S	\$1,144	P1S	87	1.15	8.70	88.5	17.994	230/460	9;15
		3600	182/4JM	007360T3H184JMV-S	\$1,144	P1S	87	1.15	6.90	88.5	17.994	575	9;15
10	7.5	3600	182/4JM	007360T3V184JMV-S	\$1,144	P1S	87	1.15	10.0	88.5	17.994	200/400	9;15,51
		1800	213/5JM	007180T3E213JMV-S	\$1,201	P1S	135	1.15	9.30	91.0	18.977	230/460	9;15
		3600	213/5JM	010360T3E213JMV-S	\$1,371	P1S	132	1.15	12.0	89.5	19.370	230/460	9;15
		3600	213/5JM	010360T3H213JMV-S	\$1,371	P1S	132	1.15	9.60	89.5	19.370	575	9;15
15	11	1800	213/5JM	010360T3V213JMV-S	\$1,371	P1S	132	1.15	13.8	89.5	19.370	200/400	9;15,51
		3600	213/5JM	010180T3E215JMV-S	\$1,446	P1S	140	1.15	12.4	91.7	18.977	230/460	9;15
		1800	213/5JM	010180T3H215JMV-S	\$1,448	P1S	140	1.15	9.90	91.7	18.977	575	9;15
		3600	213/5JM	015360T3E215JMV-S	\$1,789	P1S	151	1.15	17.2	90.2	20.158	230/460	9;15
20	15	3600	213/5JM	015360T3H215JMV-S	\$1,789	P1S	151	1.15	13.8	90.2	20.158	575	9;15,51
		3600	213/5JM	015360T3V215JMV-S	\$1,789	P1S	151	1.15	19.8	90.2	20.158	200/400	9;15
		1800	254/6JM	015180T3E254JMV-S	\$2,147	P1S	175	1.15	18.6	93.0	23.898	230/460	9;15,51
		3600	254/6JM	020360T3E254JMV-S	\$2,205	P1S	206	1.15	23.8	91.0	23.359	230/460	9;15
25	18.5	3600	254/6JM	020360T3H254JMV-S	\$2,205	P1S	206	1.15	19.0	91.0	23.359	575	9;15
		3600	254/6JM	020360T3V254JMV-S	\$2,205	P1S	206	1.15	27.4	91.0	23.359	200/400	9;15
		1800	254/6JM	020180T3E256JMV-S	\$2,580	P1S	198	1.15	25.0	93.0	23.898	230/460	9;15,51
		3600	254/6JM	025360T3E256JMV-S	\$2,696	P1S	217	1.15	29.1	91.7	23.359	230/460	9;15
30	22	3600	254/6JM	025360T3H256JMV-S	\$2,696	P1S	217	1.15	23.3	91.7	23.359	575	9;15,51
		3600	254/6JM	025360T3V256JMV-S	\$2,696	P1S	217	1.15	33.5	91.7	23.359	200/400	9;15
		1800	284/6JM	025180T3E284JMV-W40	\$3,137	P1C	421	1.25	29.5	93.6	27.403	230/460	15,51
40	30	3600	284/6JM	030360T3H284JMV-W40	\$3,422	P1C	370	1.25	28.0	91.7	27.403	575	15
		1800	284/6JM	030180T3H286JMV-W40	\$3,610	P1C	458	1.25	27.9	94.1	27.403	575	15
		3600	284/6JM	040360T3E286JMV-W40	\$4,066	P1C	409	1.25	46.8	92.4	27.403	230/460	15
		3600	286JM	040360T3H286JMV*	\$4,066	P1C	422	1.15	37.7	92.4	28.077	575	15
50	37	3600	284/6JM	040360T3H286JMV-W40	\$4,066	P1C	408	1.25	37.4	92.4	27.403	575	15
		1800	324/6JM	040180T3E324JMV-W40	\$4,431	P1C	514	1.25	47.6	94.1	29.427	230/460	15
		3600	324/6JM	050360T3E324JMV-W40	\$4,911	P1C	494	1.25	58.7	93.0	29.427	230/460	15
		3600	324/6JM	050360T3H324JMV-W40	\$4,911	P1C	485	1.25	47.0	93.0	29.427	575	15
60	45	3600	324/6JM	050360T3V324JMV-W40	\$4,911	P1C	499	1.25	67.5	93.0	29.427	200/400	15
		1800	324/6JM	050180T3H326JMV-W40	\$5,189	P1C	555	1.25	46.8	94.5	29.427	575	15
75	55	3600	364/5JM	060360T3H364JMV-W40	\$5,761	P1C	524	1.25	56.8	93.6	29.427	575	15
75	55	3600	364/5JM	075360T3H364JMV-W40	\$7,351	P1C	814	1.25	67.8	93.6	31.865	575	15

* To be discontinued and replaced by W40 model once inven-tory is depleted.

Please refer to back cover for description of "NOTES"

For detailed specifications, data sheets, drawings and performance curves visit <http://www.weg.net>



JP - ODP - Three Phase

HP	kW	RPM	Frame	Catalog Number	List Price	Mult. Symbol	Approx. Shipping Weight (lbs)	Service Factor	FL Amps @ High	FL. Eff (%)	"C" Dimension (in)	Voltage (V)	Notes
1	0.75	1800	143/5JP	001180T3E143JP-S	\$486	P1S	40	1.15	1.50	85.5	16.772	230/460	9,51
		1200	143/5JP	001120T3E145JP-S	\$550	P1S	48	1.15	1.70	82.5	16.772	230/460	9
1.5	1.1	3600	143/5JP	001560T3E143JP-S	\$534	P1S	35	1.15	1.90	84.0	16.772	230/460	9
		3600	143/5JP	001560T3V143JP-S	\$534	P1S	35	1.15	2.10	84.0	16.772	200/400	9
		1800	143/5JP	001580T3E145JP-S	\$553	P1S	47	1.15	2.10	86.5	17.953	230/460	9,51
		1200	182/4JP	001520T3E182JP-S	\$729	P1S	77	1.15	2.30	86.5	18.543	230/460	9
2	1.5	3600	143/5JP	002360T3E145JP-S	\$580	P1S	42	1.15	2.40	85.5	17.165	230/460	9
		3600	143/5JP	002360T3V145JP-S	\$580	P1S	42	1.15	2.80	85.5	17.165	200/400	9
		1800	143/5JP	002180T3E145JP-S	\$607	P1S	45	1.15	2.70	86.5	17.953	230/460	9
		1200	182/4JP	002120T3E184JP-S	\$863	P1S	86	1.15	3.00	87.5	19.331	230/460	9
3	2.2	3600	143/5JP	003360T3E145JP-S	\$660	P1S	45	1.15	3.60	85.5	17.559	230/460	9
		3600	143/5JP	003360T3H145JP-S	\$660	P1S	45	1.15	2.90	85.5	17.559	575	9
		3600	143/5JP	003360T3V145JP-S	\$660	P1S	45	1.15	4.10	85.5	17.559	200/400	9
		1800	182/4JP	003180T3E182JP-S	\$665	P1S	85	1.15	3.90	89.5	19.724	230/460	9
		1800	182/4JP	003180T3H182JP-S	\$665	P1S	85	1.15	3.10	89.5	19.724	575	9
		1200	213/5JP	003120T3E213JP-S	\$1,095	P1S	132	1.15	4.20	88.5	21.575	230/460	9
5	3.7	3600	182/4JP	005360T3E182JP-S	\$792	P1S	74	1.15	6.10	86.5	19.331	230/460	9
		3600	182/4JP	005360T3H182JP-S	\$792	P1S	74	1.15	4.90	86.5	19.331	575	9
		3600	182/4JP	005360T3V182JP-S	\$792	P1S	74	1.15	7.00	86.5	19.331	200/400	9
		1800	182/4JP	005180T3E184JP-S	\$848	P1S	99	1.15	6.30	89.5	20.906	230/460	9
		1800	182/4JP	005180T3H184JP-S	\$848	P1S	99	1.15	5.10	89.5	20.906	575	9,51
		1200	213/5JP	005120T3E215JP-S	\$1,321	P1S	132	1.15	6.70	89.5	21.969	230/460	9
7.5	5.5	3600	182/4JP	007360T3E184JP-S	\$1,086	P1S	89	1.15	8.70	88.5	19.724	230/460	9
		3600	182/4JP	007360T3H184JP-S	\$1,086	P1S	89	1.15	6.90	88.5	19.724	575	9
		3600	182/4JP	007360T3V184JP-S	\$1,086	P1S	89	1.15	10.0	88.5	19.724	200/400	9
		1800	213/5JP	007180T3E213JP-S	\$1,120	P1S	144	1.15	9.30	91.0	21.575	230/460	9
		1800	213/5JP	007180T3H213JP-S	\$1,120	P1S	144	1.15	7.40	91.0	21.575	575	9
		1800	213/5JP	007180T3V213JP-S	\$1,120	P1S	144	1.15	10.6	91.0	21.575	200/400	9
		1200	254/6JP	007120T3E254JP-S	\$2,113	P1S	226	1.15	10.2	90.2	24.843	230/460	9,51
		1200	254JP	007120T3E254JP-W40	\$2,113	P1C	245	1.25	9.94	90.2	25.398	230/460	
10	7.5	3600	213/5JP	010360T3E213JP-S	\$1,289	P1S	144	1.15	12.0	89.5	21.969	230/460	9
		3600	213/5JP	010360T3H213JP-S	\$1,289	P1S	144	1.15	9.60	89.5	21.969	575	9
		3600	213/5JP	010360T3V213JP-S	\$1,289	P1S	144	1.15	13.8	89.5	21.969	200/400	9
		1800	213/5JP	010180T3E215JP-S	\$1,366	P1S	149	1.15	12.4	91.7	21.575	230/460	9
		1800	213/5JP	010180T3H215JP-S	\$1,366	P1S	149	1.15	9.90	91.7	21.575	575	9
		1800	213/5JP	010180T3V215JP-S	\$1,366	P1S	149	1.15	14.3	91.7	21.575	200/400	9
		1200	254/6JP	010120T3E256JP-S	\$2,298	P1S	254	1.15	13.9	91.7	24.843	230/460	9
		1200	254/6JP	010120T3E256JP-W40	\$2,298	P1C	271	1.25	12.8	91.7	27.146	230/460	

continued on next page

Please refer to back cover for description of "NOTES"

For detailed specifications, data sheets, drawings and performance curves visit <http://www.weg.net>

Data subject to change without notice.

Can't find what you are looking for? Call 1-800-ASK-4WEG (275-4934)

CLOSE-COUPLED PUMP ODP MOTORS

JP - ODP - Three Phase - continued

HP	kW	RPM	Frame	Catalog Number	List Price	Mult. Symbol	Approx. Shipping Weight (lbs)	Service Factor	FL Amps @ High	FL. Eff (%)	"C" Dimension (in)	Voltage (V)	Notes
15	11	3600	213/5JP	015360T3E215JP-S	\$1,707	P1S	160	1.15	17.2	90.2	22.756	230/460	9
		3600	213/5JP	015360T3H215JP-S	\$1,707	P1S	160	1.15	13.8	90.2	22.756	575	9
		3600	213/5JP	015360T3V215JP-S	\$1,707	P1S	160	1.15	19.8	90.2	22.756	200/400	9
		1800	254/6JP	015180T3E254JP-S	\$1,995	P1S	228	1.15	18.6	93.0	24.843	230/460	9
		1800	254/6JP	015180T3H254JP-S	\$1,995	P1S	228	1.15	14.9	93.0	24.843	575	9,51
		1800	254JP	015180T3E254JP-W40	\$1,995	P1C	293	1.25	17.5	93.0	25.398	230/460	
		1800	254JP	015180T3H254JP-W40	\$1,995	P1C	269	1.25	14.0	93.0	25.398	575	
		1200	284JP	015120T3E284JP-W40	\$3,163	P1C	359	1.25	18.4	91.7	26.913	230/460	
20	15	3600	254/6JP	020360T3E254JP-S	\$2,106	P1S	204	1.15	23.8	91.0	24.843	230/460	9
		3600	254/6JP	020360T3H254JP-S	\$2,106	P1S	204	1.15	19.0	91.0	24.843	575	9,51
		3600	254/6JP	020360T3V254JP-S	\$2,106	P1S	204	1.15	27.4	91.0	24.843	200/400	9,51
		3600	254JP	020360T3E254JP-W40	\$2,106	P1C	239	1.25	24.3	91.0	25.398	230/460	
		3600	254JP	020360T3H254JP-W40	\$2,106	P1C	238	1.25	19.4	91.0	25.398	575	51
		3600	254JP	020360T3V254JP-W40	\$2,106	P1C	278	1.25	28.0	91.0	25.398	200/400	
		1800	254/6JP	020180T3E256JP-S	\$2,413	P1S	252	1.15	25.0	93.0	24.843	230/460	9
		1800	254/6JP	020180T3H256JP-S	\$2,413	P1S	252	1.15	20.0	93.0	24.843	575	9
		1800	254/6JP	020180T3E256JP-W40	\$2,413	P1C	329	1.25	24.1	93.0	27.146	230/460	
		1800	254/6JP	020180T3H256JP-W40	\$2,413	P1C	328	1.25	19.3	93.0	27.146	575	
1200	284/6JP	020120T3E286JP-W40	\$3,871	P1C	434	1.25	24.3	92.4	28.413	230/460	51		
25	18.5	3600	254/6JP	025360T3E256JP-S	\$2,599	P1S	218	1.15	29.1	91.7	24.843	230/460	9
		3600	254/6JP	025360T3H256JP-S	\$2,599	P1S	218	1.15	23.3	91.7	24.843	575	9,51
		3600	254/6JP	025360T3V256JP-S	\$2,599	P1S	218	1.15	33.5	91.7	24.843	200/400	9
		3600	254/6JP	025360T3E256JP-W40	\$2,599	P1C	269	1.25	28.8	91.7	27.146	230/460	
		3600	254/6JP	025360T3H256JP-W40	\$2,599	P1C	310	1.25	23.0	91.7	27.146	575	
		3600	254/6JP	025360T3V256JP-W40	\$2,599	P1C	310	1.25	33.1	91.7	27.146	200/400	
		1800	284JP	025180T3E284JP-W40	\$2,911	P1C	400	1.25	29.5	93.6	26.913	230/460	
		1800	284JP	025180T3H284JP-W40	\$2,911	P1C	400	1.25	23.6	93.6	26.913	575	
		1200	324JP	025120T3E324JP-W40	\$4,306	P1C	516	1.25	30.8	93.0	28.937	230/460	
30	22	3600	284JP	030360T3E284JP-W40	\$3,185	P1C	354	1.25	35.0	91.7	26.913	230/460	
		3600	284JP	030360T3H284JP-W40	\$3,185	P1C	367	1.25	28.0	91.7	26.913	575	
		3600	284JP	030360T3V284JP-W40	\$3,185	P1C	422	1.25	40.3	91.7	26.913	200/400	
		1800	284/6JP	030180T3E286JP-W40	\$3,367	P1C	447	1.25	34.9	94.1	28.413	230/460	
		1800	284/6JP	030180T3H286JP-W40	\$3,367	P1C	453	1.25	27.9	94.1	28.413	575	
		1800	284/6JP	030180T3V286JP-W40	\$3,367	P1C	447	1.25	40.1	94.1	28.413	200/400	51
		1200	324/6JP	030120T3E326JP-W40	\$4,980	P1C	602	1.25	36.0	93.6	30.437	230/460	51
		3600	284/6JP	040360T3E286JP-W40	\$3,811	P1C	398	1.25	46.8	92.4	28.413	230/460	
40	30	3600	284/6JP	040360T3H286JP-W40	\$3,811	P1C	397	1.25	37.4	92.4	28.413	575	51
		3600	284/6JP	040360T3V286JP-W40	\$3,811	P1C	532	1.25	53.8	92.4	28.413	200/400	
		1800	324JP	040180T3E324JP-W40	\$3,797	P1C	499	1.25	47.6	94.1	28.937	230/460	
		1800	324JP	040180T3H324JP-W40	\$3,797	P1C	491	1.25	38.1	94.1	28.937	575	51
		1800	324JP	040180T3V324JP-W40	\$3,797	P1C	575	1.25	54.7	94.1	28.937	200/400	
		1200	364/5JP	040120T3E364JP-W40	\$7,444	P1C	849	1.25	47.1	94.1	32.150	230/460	

continued on next page

JP - ODP - Three Phase - continued

HP	kW	RPM	Frame	Catalog Number	List Price	Mult. Symbol	Approx. Shipping Weight (lbs)	Service Factor	FL Amps @ High	FL. Eff (%)	"C" Dimension (in)	Voltage (V)	Notes
50	37	3600	324JP	050360T3E324JP-W40	\$4,607	P1C	479	1.25	58.7	93.0	28.937	230/460	
		3600	324JP	050360T3G324JP-W40	\$4,607	P1C	477	1.25	58.7	93.0	28.937	460	
		3600	324JP	050360T3H324JP-W40	\$4,607	P1C	525	1.25	47.0	93.0	28.937	575	51
		3600	324JP	050360T3V324JP-W40	\$4,607	P1C	527	1.25	67.5	93.0	28.937	200/400	
		1800	324/6JP	050180T3E326JP-W40	\$4,878	P1C	562	1.25	58.5	94.5	30.437	230/460	
		1800	324/6JP	050180T3H326JP-W40	\$4,878	P1C	599	1.25	46.8	94.5	30.437	575	
		1200	364/5JP	050120T3E365JP-W40	\$7,666	P1C	884	1.25	58.1	94.1	32.150	230/460	
60	45	3600	324/6JP	060360T3E326JP-W40	\$5,432	P1C	524	1.25	71.0	93.6	30.437	230/460	
		3600	324/6JP	060360T3G326JP-W40	\$5,432	P1C	522	1.25	71.0	93.6	30.437	460	
		3600	324/6JP	060360T3H326JP-W40	\$5,432	P1C	521	1.25	56.8	93.6	30.437	575	51
		3600	324/6JP	060360T3V326JP-W40	\$5,432	P1C	628	1.25	81.7	93.6	30.437	200/400	
		1800	364/5JP	060180T3E364JP-W40	\$5,994	P1C	880	1.25	69.9	95.0	32.150	230/460	
		1800	364/5JP	060180T3G364JP-W40	\$5,994	P1C	847	1.25	69.9	95.0	32.150	460	
		1800	364/5JP	060180T3H364JP-W40	\$5,994	P1C	847	1.25	55.9	95.0	32.150	575	
75	55	1200	404/5JP	060120T3E404JP-W40	\$9,462	P1C	1051	1.25	70.3	94.5	35.152	230/460	
		3600	364/5JP	075360T3E364JP-W40	\$7,699	P1C	819	1.25	84.8	93.6	32.150	230/460	
		3600	364/5JP	075360T3G364JP-W40	\$7,699	P1C	794	1.25	84.8	93.6	32.150	460	
		3600	364/5JP	075360T3H364JP-W40	\$7,699	P1C	794	1.25	67.8	93.6	32.150	575	
		3600	364/5JP	075360T3V364JP-W40	\$7,699	P1C	794	1.25	97.5	93.6	32.150	200/400	
		1800	364/5JP	075180T3E365JP-W40	\$6,932	P1C	904	1.25	85.5	95.0	32.150	230/460	
		1800	364/5JP	075180T3G365JP-W40	\$6,932	P1C	875	1.25	85.5	95.0	32.150	460	
100	75	1800	364/5JP	075180T3H365JP-W40	\$6,932	P1C	875	1.25	68.4	95.0	32.150	575	
		1200	404/5JP	075120T3E405JP-W40	\$9,762	P1C	1087	1.25	85.9	94.5	35.152	230/460	
		3600	364/5JP	100360T3E365JP-W40	\$8,173	P1C	835	1.25	116	93.6	32.150	230/460	
		3600	364/5JP	100360T3G365JP-W40	\$8,173	P1C	835	1.25	116	93.6	32.150	460	
125	125	1800	404/5JP	100180T3E404JP-W40	\$8,783	P1C	1079	1.25	115	95.4	35.152	230/460	
		1800	404/5JP	100180T3G404JP-W40	\$8,783	P1C	1070	1.25	115	95.4	35.152	460	
150	110	3600	404/5JP	125360T3G404JP-W40	\$10,563	P1C	955	1.25	136	94.1	35.152	460	
		1800	404/5JP	125180T3G405JP-W40	\$10,317	P1C	1156	1.25	138	95.4	35.152	460	
150	110	3600	404/5JP	150360T3G405JP-W40	\$13,922	P1C	1004	1.25	167	94.1	35.152	460	

Please refer to back cover for description of "NOTES"

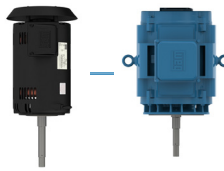
For detailed specifications, data sheets, drawings and performance curves visit <http://www.weg.net>

Data subject to change without notice.

Can't find what you are looking for? Call 1-800-ASK-4WEG (275-4934)

Pump Motors

CLOSE-COUPLED PUMP ODP MOTORS



JP - ODP - Three Phase - Footless Vertical

HP	kW	RPM	Frame	Catalog Number	List Price	Mult. Symbol	Approx. Shipping Weight (lbs)	Service Factor	FL Amps @ High	FL. Eff (%)	"C" Dimension (in)	Voltage (V)	Notes
1.5	1.1	3600	143/5JP	001560T3E143JPV-S	\$589	P1S	35	1.15	1.90	84.0	18.072	230/460	9;15
2	1.5	3600	143/5JP	002360T3E145JPV-S	\$635	P1S	42	1.15	2.40	85.5	18.465	230/460	9;15
3	2.2	3600	143/5JP	003360T3E145JPV-S	\$715	P1S	45	1.15	3.60	85.5	18.859	230/460	9;15
5	3.7	3600	182/4JP	005360T3E182JPV-S	\$850	P1S	74	1.15	6.10	86.5	20.671	230/460	9;15
7.5	5.5	3600	182/4JP	007360T3E184JPV-S	\$1,144	P1S	89	1.15	8.70	88.5	21.064	230/460	9;15,51
		3600	182/4JP	007360T3V184JPV-S	\$1,144	P1S	89	1.15	10.0	88.5	21.064	200/400	9;15,51
		1200	254/6JP	007120T3E254JPV-S	\$2,211	P1S	226	1.15	10.2	90.2	26.233	230/460	9;15
10	7.5	3600	213/5JP	010360T3E213JPV-S	\$1,371	P1S	144	1.15	12.0	89.5	23.229	230/460	9;15
		3600	213/5JP	010360T3H213JPV-S	\$1,371	P1S	144	1.15	9.60	89.5	23.229	575	9;15
		3600	213/5JP	010360T3V213JPV-S	\$1,371	P1S	144	1.15	13.8	89.5	23.229	200/400	9;15,51
		1200	254/6JP	010120T3E256JPV-S	\$2,396	P1S	254	1.15	13.9	91.7	26.233	230/460	9;15
15	11	3600	213/5JP	015360T3E215JPV-S	\$1,789	P1S	160	1.15	17.2	90.2	24.016	230/460	9;15
		3600	213/5JP	015360T3H215JPV-S	\$1,789	P1S	160	1.15	13.8	90.2	24.016	575	9;15
		3600	213/5JP	015360T3V215JPV-S	\$1,789	P1S	160	1.15	19.8	90.2	24.016	200/400	9;15,51
		1800	254/6JP	015180T3V254JPV-S	\$2,093	P1S	228	1.15	21.4	93.0	26.233	200/400	9;15
		1200	284/6JP	015120T3E284JPV-W40	\$3,399	P1C	382	1.25	18.4	91.7	30.283	230/460	15
20	15	3600	254/6JP	020360T3E254JPV-S	\$2,204	P1S	208	1.15	23.8	91.0	26.233	230/460	9;15
		3600	254/6JP	020360T3H254JPV-S	\$2,204	P1S	208	1.15	19.0	91.0	26.233	575	9;15,51
		3600	254/6JP	020360T3V254JPV-S	\$2,204	P1S	208	1.15	27.4	91.0	26.233	200/400	9;15,51
		1800	254/6JP	020180T3E256JPV-S	\$2,580	P1S	198	1.15	25.0	93.0	26.772	230/460	9;15,51
25	18.5	3600	254/6JP	025360T3E256JPV-S	\$2,697	P1S	222	1.15	29.1	91.7	26.233	230/460	9;15
		3600	254/6JP	025360T3H256JPV-S	\$2,697	P1S	222	1.15	23.3	91.7	26.233	575	9;15,51
		3600	254/6JP	025360T3V256JPV-S	\$2,697	P1S	222	1.15	33.5	91.7	26.233	200/400	9;15,51
		1800	284/6JP	025180T3E284JPV-W40	\$3,137	P1C	423	1.25	29.5	93.6	30.283	230/460	15,51
30	22	3600	284JP	030360T3E284JPV*	\$3,422	P1C	381	1.15	34.7	91.7	29.464	230/460	15
		3600	284JP	030360T3V284JPV*	\$3,422	P1C	381	1.15	39.9	91.7	29.464	200/400	15
		3600	284/6JP	030360T3E284JPV-W40	\$3,422	P1C	377	1.25	35.0	91.7	30.283	230/460	15
		3600	284/6JP	030360T3H284JPV-W40	\$3,422	P1C	372	1.25	28.0	91.7	30.283	575	15;51
		3600	284/6JP	030360T3V284JPV-W40	\$3,422	P1C	381	1.25	40.3	91.7	30.283	200/400	15
		1800	284/6JP	030180T3E286JPV-W40	\$3,609	P1C	460	1.25	34.9	94.1	30.283	230/460	15
40	30	3600	286JP	040360T3E286JPV*	\$4,066	P1C	425	1.15	47.1	92.4	30.957	230/460	15
		3600	286JP	040360T3V286JPV*	\$4,066	P1C	425	1.15	54.2	92.4	30.957	200/400	15
		3600	284/6JP	040360T3E286JPV-W40	\$4,066	P1C	411	1.25	46.8	92.4	30.283	230/460	15
		3600	284/6JP	040360T3V286JPV-W40	\$4,066	P1C	414	1.25	53.8	92.4	30.283	200/400	15
		1800	324/6JP	040180T3E324JPV-W40	\$4,077	P1C	515	1.25	47.6	94.1	32.307	230/460	15
		1800	324/6JP	040180T3V324JPV-W40	\$4,077	P1C	520	1.25	54.7	94.1	32.307	200/400	15

continued on next page

CLOSE-COUPLED PUMP ODP MOTORS

JP - ODP - Three Phase - Footless Vertical - continued

HP	kW	RPM	Frame	Catalog Number	List Price	Mult. Symbol	Approx. Shipping Weight (lbs)	Service Factor	FL Amps @ High	FL. Eff (%)	"C" Dimension (in)	Voltage (V)	Notes
50	37	3600	324JP	050360T3E324.JPV*	\$4,911	P1C	533	1.15	59.1	93.0	32.027	230/460	15
		3600	324JP	050360T3V324.JPV*	\$4,911	P1C	534	1.15	68.0	93.0	32.027	200/400	15
		3600	324/6JP	050360T3E324.JPV-W40	\$4,911	P1C	495	1.25	58.7	93.0	32.307	230/460	15
		3600	324/6JP	050360T3H324.JPV-W40	\$4,911	P1C	486	1.25	47.0	93.0	32.307	575	15
		3600	324/6JP	050360T3V324.JPV-W40	\$4,911	P1C	500	1.25	67.5	93.0	32.307	200/400	15
		1800	324/6JP	050180T3E326.JPV-W40	\$5,190	P1C	566	1.25	58.5	94.5	32.307	230/460	15
		1800	324/6JP	050180T3V326.JPV-W40	\$5,190	P1C	611	1.25	67.3	94.5	32.307	200/400	15
60	45	3600	326JP	060360T3E326.JPV*	\$5,761	P1C	581	1.15	71.0	93.6	33.523	230/460	15
		3600	326JP	060360T3V326.JPV*	\$5,761	P1C	583	1.15	81.7	93.6	33.523	200/400	15
		3600	324/6JP	060360T3E326.JPV-W40	\$5,761	P1C	528	1.25	71.0	93.6	32.307	230/460	15
		3600	324/6JP	060360T3V326.JPV-W40	\$5,761	P1C	534	1.25	81.7	93.6	32.307	200/400	15
		1800	364/5JP	060180T3E364.JPV-W40	\$6,365	P1C	884	1.25	69.9	95.0	34.745	230/460	15
		1800	364/5JP	060180T3V364.JPV-W40	\$6,365	P1C	883	1.25	80.4	95.0	34.745	200/400	15
75	55	3600	364/5JP	075360T3E364.JPV*	\$8,121	P1C	880	1.15	83.4	93.6	35.208	230/460	15
		3600	364/5JP	075360T3E364.JPV-W40	\$8,121	P1C	823	1.25	84.8	93.6	34.745	230/460	15
		3600	364/5JP	075360T3H364.JPV-W40	\$8,121	P1C	818	1.25	67.8	93.6	34.745	575	15
		3600	364/5JP	075360T3V364.JPV-W40	\$8,121	P1C	822	1.25	97.5	93.6	34.745	200/400	15
		1800	364/5JP	075180T3E365.JPV-W40	\$7,331	P1C	907	1.25	85.5	95.0	34.745	230/460	15
		1800	364/5JP	075180T3V365.JPV-W40	\$7,331	P1C	909	1.25	98.3	95.0	34.745	200/400	15
100	75	3600	364/5JP	100360T3E365.JPV-W40	\$8,609	P1C	875	1.25	116	93.6	34.745	230/460	15
		3600	364/5JP	100360T3H365.JPV-W40	\$8,609	P1C	870	1.25	92.8	93.6	34.745	575	15
		3600	364/5JP	100360T3V365.JPV-W40	\$8,609	P1C	875	1.25	133	93.6	34.745	200/400	15
		1800	404/5JP	100180T3E404.JPV-W40	\$9,237	P1C	1059	1.25	115	95.4	37.747	230/460	15
		1800	404/5JP	100180T3V404.JPV-W40	\$9,237	P1C	1059	1.25	132	95.4	37.747	200/400	15

* To be discontinued and replaced by W40 model once inventory is depleted.



CLOSE-COUPLED PUMP TEFC MOTORS - WITH INTERNAL AEGIS® SGR

JM - TEFC - Three Phase

HP	kW	RPM	Frame	Catalog Number	List Price	Mult. Symbol	Approx. Shipping Weight (lbs)	Service Factor	FL Amps @ High	FL. Eff (%)	"C" Dimension (in)	Voltage (V)	Notes
1	0.75	1800	143/5JM	00118ET3E143JM-SG	\$764	P1S	45	1.15	1.50	85.5	16.102	230/460	9;34
		1800	143/5JM	00118ET3H143JM-SG	\$764	P1S	45	1.15	1.20	85.5	16.102	575	9;34
1.5	1.1	3600	143/5JM	00156ET3E143JM-SG	\$850	P1S	41	1.15	1.90	84.0	15.709	230/460	9;34
		3600	143/5JM	00156ET3H143JM-SG	\$850	P1S	41	1.15	1.50	84.0	15.709	575	9;34,51
		1800	143/5JM	00158ET3E145JM-SG	\$793	P1S	47	1.15	2.00	86.5	16.102	230/460	9;34
		1800	143/5JM	00158ET3H145JM-SG	\$793	P1S	47	1.15	1.60	86.5	16.102	575	9;34
2	1.5	3600	143/5JM	00236ET3E145JM-SG	\$834	P1S	47	1.15	2.50	85.5	16.496	230/460	9;34
		3600	143/5JM	00236ET3H145JM-SG	\$834	P1S	47	1.15	2.00	85.5	16.496	575	9;34,51
		1800	143/5JM	00218ET3E145JM-SG	\$858	P1S	50	1.15	2.70	86.5	16.496	230/460	9;34
		1800	143/5JM	00218ET3H145JM-SG	\$858	P1S	50	1.15	2.20	86.5	16.496	575	9;34
3	2.2	3600	182/4JM	00336ET3E182JM-SG	\$1,103	P1S	81	1.15	3.70	86.5	17.835	230/460	9;34
		3600	182/4JM	00336ET3H182JM-SG	\$1,103	P1S	81	1.15	2.90	86.5	17.835	575	9;34
		1800	182/4JM	00318ET3E182JM-SG	\$1,211	P1S	87	1.15	3.80	89.5	19.409	230/460	9;34
		1800	182/4JM	00318ET3H182JM-SG	\$1,211	P1S	101	1.15	3.10	89.5	19.409	575	9;34
5	3.7	3600	182/4JM	00536ET3E184JM-SG	\$1,264	P1S	99	1.15	5.90	88.5	19.409	230/460	9;34
		3600	182/4JM	00536ET3H184JM-SG	\$1,264	P1S	99	1.15	4.70	88.5	19.409	575	9;34
		1800	182/4JM	00518ET3E184JM-SG	\$1,331	P1S	94	1.15	6.50	89.5	19.409	230/460	9;34
		1800	182/4JM	00518ET3H184JM-SG	\$1,331	P1S	94	1.15	5.20	89.5	19.409	575	9;34
7.5	5.5	3600	213/5JM	00736ET3E213JM-SG	\$1,645	P1S	152	1.15	8.70	89.5	21.220	230/460	9;34
		3600	213/5JM	00736ET3H213JM-SG	\$1,645	P1S	152	1.15	6.90	89.5	21.220	575	9;34,51
		1800	213/5JM	00718ET3E213JM-SG	\$1,743	P1S	139	1.15	9.10	91.7	20.039	230/460	9;34
		1800	213/5JM	00718ET3H213JM-SG	\$1,743	P1S	139	1.15	7.30	91.7	20.039	575	9;34
10	7.5	3600	213/5JM	01036ET3E215JM-SG	\$2,001	P1S	179	1.15	11.5	90.2	22.795	230/460	9;34
		3600	213/5JM	01036ET3H215JM-SG	\$2,001	P1S	179	1.15	9.20	90.2	22.795	575	9;34
		1800	213/5JM	01018ET3E215JM-SG	\$2,023	P1S	151	1.15	12.2	91.7	20.433	230/460	9;34
		1800	213/5JM	01018ET3H215JM-SG	\$2,023	P1S	151	1.15	9.80	91.7	20.433	575	9;34
15	11	3600	213/5JM	01536ET3E215JM-SG	\$2,258	P1S	178	1.15	17.0	91.0	22.795	230/460	9;34
		3600	213/5JM	01536ET3H215JM-SG	\$2,258	P1S	178	1.15	13.6	91.0	22.795	575	9;34
		3600	254/6JM	01536ET3E254JM-SG	\$2,909	P1S	216	1.15	17.4	91.0	24.055	230/460	9;34
		3600	254/6JM	01536ET3H254JM-SG	\$2,909	P1S	216	1.15	13.9	91.0	24.055	575	9;34
		1800	254/6JM	01518ET3E254JM-SG	\$2,933	P1S	249	1.15	18.2	92.4	24.055	230/460	9;34
		1800	254/6JM	01518ET3H254JM-SG	\$2,933	P1S	249	1.15	14.6	92.4	24.055	575	9;34
20	15	3600	254/6JM	02036ET3E256JM-SG	\$3,298	P1S	257	1.15	22.7	91.0	24.843	230/460	9;34
		3600	254/6JM	02036ET3H256JM-SG	\$3,298	P1S	257	1.15	18.2	91.0	24.843	575	9;34,51
		1800	254/6JM	02018ET3E256JM-SG	\$3,188	P1S	279	1.15	24.7	92.4	24.843	230/460	9;34
		1800	254/6JM	02018ET3H256JM-SG	\$3,188	P1S	279	1.15	19.8	93.0	24.843	575	9;34



JP - TEFC - Three Phase

HP	kW	RPM	Frame	Catalog Number	List Price	Mult. Symbol	Approx. Shipping Weight (lbs)	Service Factor	FL Amps @ High	FL. Eff (%)	"C" Dimension (in)	Voltage (V)	Notes
1	0.75	1800	143/5JP	00118ET3E143JP-SG	\$764	P1S	50	1.15	1.50	85.5	19.173	230/460	9;34
		3600	143/5JP	00156ET3E143JP-SG	\$850	P1S	46	1.15	1.90	84.0	18.780	230/460	9;34
1.5	1.1	1800	143/5JP	00158ET3E145JP-SG	\$793	P1S	52	1.15	2.00	86.5	19.173	230/460	9;34
		3600	143/5JP	00236ET3E145JP-SG	\$834	P1S	52	1.15	2.50	85.5	19.567	230/460	9;34
2	1.5	1800	143/5JP	00218ET3E145JP-SG	\$858	P1S	55	1.15	2.70	86.5	19.567	230/460	9;34
		3600	182/4JP	00336ET3E182JP-SG	\$1,103	P1S	88	1.15	3.70	86.5	20.906	230/460	9;34
3	2.2	1800	182/4JP	00318ET3E182JP-SG	\$1,211	P1S	87	1.15	3.80	89.5	22.480	230/460	9;34
		3600	182/4JP	00536ET3E184JP-SG	\$1,264	P1S	106	1.15	5.90	88.5	22.480	230/460	9;34
5	3.7	1800	182/4JP	00518ET3E184JP-SG	\$1,331	P1S	105	1.15	6.50	89.5	22.480	230/460	9;34
		3600	213/5JP	00736ET3E213JP-SG	\$1,645	P1S	161	1.15	8.70	89.5	25.079	230/460	9;34
7.5	5.5	1800	213/5JP	00718ET3E213JP-SG	\$1,743	P1S	148	1.15	9.10	91.7	23.898	230/460	9;34
		1800	213/5JP	00718ET3H213JP-SG	\$1,743	P1S	148	1.15	7.30	91.7	23.898	575	9;34
		3600	213/5JP	01036ET3E215JP-SG	\$2,001	P1S	184	1.15	11.5	90.2	26.654	230/460	9;34
10	7.5	1800	213/5JP	01018ET3E215JP-SG	\$2,023	P1S	160	1.15	12.2	91.7	24.291	230/460	9;34
		1800	213/5JP	01018ET3H215JP-SG	\$2,023	P1S	160	1.15	9.80	91.7	24.291	575	9;34
		3600	254/6JP	01536ET3E254JP-SG	\$2,909	P1S	217	1.15	17.4	91.0	26.929	230/460	9;34
15	11	1800	254/6JP	01518ET3E254JP-SG	\$2,933	P1S	251	1.15	18.2	92.4	26.929	230/460	9;34
		3600	254/6JP	02036ET3E256JP-SG	\$3,298	P1S	258	1.15	22.7	91.0	27.717	230/460	9;34
20	15	1800	254/6JP	02018ET3E256JP-SG	\$3,188	P1S	281	1.15	24.7	93.0	27.717	230/460	9;34
		3600	324/6JP	05018ET3E326JP-W22G	\$7,024	P1	476	1.25	59.2	94.5	34.021	230/460	34;51

Please refer to back cover for description of "NOTES"

For detailed specifications, data sheets, drawings and performance curves visit <http://www.weg.net>

Data subject to change without notice.

Can't find what you are looking for? Call 1-800-ASK-4WEG (275-4934)



CLOSE-COUPLED PUMP ODP MOTORS - WITH INTERNAL AEGIS® SGR

JM - ODP - Three Phase

HP	kW	RPM	Frame	Catalog Number	List Price	Mult. Symbol	Approx. Shipping Weight (lbs)	Service Factor	FL Amps @ High	FL. Eff (%)	"C" Dimension (in)	Voltage (V)	Notes
1	0.75	1800	143/5JM	001180T3E143JM-SG	\$626	P1S	40	1.15	1.50	85.5	13.701	230/460	9;34
		1800	143/5JM	001180T3H143JM-SG	\$626	P1S	40	1.15	1.20	85.5	13.701	575	9;34
1.5	1.1	3600	143/5JM	001560T3E143JM-SG	\$674	P1S	33	1.15	1.90	84.0	13.701	230/460	9;34
		3600	143/5JM	001560T3H143JM-SG	\$674	P1S	33	1.15	1.50	84.0	13.701	575	9;34,51
		1800	143/5JM	001580T3E145JM-SG	\$693	P1S	47	1.15	2.10	86.5	14.882	230/460	9;34
		1800	143/5JM	001580T3H145JM-SG	\$693	P1S	47	1.15	1.70	86.5	14.882	575	9;34
2	1.5	3600	143/5JM	002360T3E145JM-SG	\$720	P1S	40	1.15	2.40	85.5	14.094	230/460	9;34,51
		3600	143/5JM	002360T3H145JM-SG	\$720	P1S	40	1.15	1.90	85.5	14.094	575	9;34
		3600	143/5JM	002360T3V145JM-SG	\$720	P1S	40	1.15	2.80	85.5	14.094	200/400	9;34
		1800	143/5JM	002180T3E145JM-SG	\$747	P1S	44	1.15	2.70	86.5	14.882	230/460	9;34
		1800	143/5JM	002180T3H145JM-SG	\$747	P1S	44	1.15	2.20	86.5	14.882	575	9;34
3	2.2	3600	143/5JM	003360T3E145JM-SG	\$800	P1S	43	1.15	3.60	85.5	14.488	230/460	9;34
		3600	143/5JM	003360T3H145JM-SG	\$800	P1S	43	1.15	2.90	85.5	14.488	575	9;34
		3600	143/5JM	003360T3V145JM-SG	\$800	P1S	43	1.15	4.10	85.5	14.488	200/400	9;34
		1800	182/4JM	003180T3E182JM-SG	\$835	P1S	85	1.15	3.90	89.5	16.654	230/460	9;34
		1800	182/4JM	003180T3H182JM-SG	\$835	P1S	85	1.15	3.10	89.5	16.654	575	9;34
		1800	182/4JM	003180T3V182JM-SG	\$835	P1S	85	1.15	4.40	89.5	16.654	200/400	9;34
5	3.7	3600	182/4JM	005360T3E182JM-SG	\$962	P1S	70	1.15	6.10	86.5	16.260	230/460	9;34
		3600	182/4JM	005360T3H182JM-SG	\$962	P1S	70	1.15	4.90	86.5	16.260	575	9;34
		3600	182/4JM	005360T3V182JM-SG	\$962	P1S	70	1.15	7.00	86.5	16.260	200/400	9;34
		1800	182/4JM	005180T3E184JM-SG	\$1,019	P1S	96	1.15	6.30	89.5	17.835	230/460	9;34
		1800	182/4JM	005180T3H184JM-SG	\$1,019	P1S	96	1.15	5.10	89.5	17.835	575	9;34
7.5	5.5	3600	182/4JM	007360T3E184JM-SG	\$1,256	P1S	88	1.15	8.70	88.5	16.654	230/460	9;34
		3600	182/4JM	007360T3H184JM-SG	\$1,256	P1S	88	1.15	6.90	88.5	16.654	575	9;34
		1800	213/5JM	007180T3E213JM-SG	\$1,320	P1S	135	1.15	9.30	91.0	17.717	230/460	9;34
		1800	213/5JM	007180T3H213JM-SG	\$1,320	P1S	135	1.15	7.40	91.0	17.717	575	9;34
10	7.5	3600	213/5JM	010360T3E213JM-SG	\$1,489	P1S	135	1.15	12.0	89.5	18.110	230/460	9;34
		3600	213/5JM	010360T3H213JM-SG	\$1,489	P1S	135	1.15	9.60	89.5	18.110	575	9;34
		1800	213/5JM	010180T3E215JM-SG	\$1,566	P1S	140	1.15	12.4	91.7	17.717	230/460	9;34
		1800	213/5JM	010180T3H215JM-SG	\$1,566	P1S	140	1.15	9.90	91.7	17.717	575	9;34
15	11	3600	213/5JM	015360T3E215JM-SG	\$1,907	P1S	151	1.15	17.2	90.2	18.898	230/460	9;34
		3600	213/5JM	015360T3H215JM-SG	\$1,907	P1S	151	1.15	13.8	90.2	18.898	575	9;34
		1800	254/6JM	015180T3E254JM-SG	\$2,275	P1S	226	1.15	18.6	93.0	21.969	230/460	9;34
		1800	254/6JM	015180T3H254JM-SG	\$2,275	P1S	226	1.15	14.9	93.0	21.969	575	9;34
20	15	3600	254/6JM	020360T3E254JM-SG	\$2,387	P1S	202	1.15	23.8	91.0	21.969	230/460	9;34
		3600	254/6JM	020360T3H254JM-SG	\$2,387	P1S	202	1.15	19.0	91.0	21.969	575	9;34
		1800	254/6JM	020180T3E256JM-SG	\$2,693	P1S	250	1.15	25.0	93.0	21.969	230/460	9;34
		1800	254/6JM	020180T3H256JM-SG	\$2,693	P1S	250	1.15	20.0	93.0	21.969	575	9;34
25	18.5	3600	254/6JM	025360T3E256JM-SG	\$2,879	P1S	225	1.15	29.1	91.7	21.969	230/460	9;34
		3600	254/6JM	025360T3H256JM-SG	\$2,879	P1S	225	1.15	23.3	91.7	21.969	575	9;34,51

Please refer to back cover for description of "NOTES"

 For detailed specifications, data sheets, drawings and performance curves visit <http://www.weg.net>



CLOSE-COUPLED PUMP ODP MOTORS - WITH INTERNAL AEGIS® SGR

JP - ODP - Three Phase

HP	kW	RPM	Frame	Catalog Number	List Price	Mult. Symbol	Approx. Shipping Weight (lbs)	Service Factor	FL Amps @ High	FL. Eff (%)	"C" Dimension (in)	Voltage (V)	Notes
1	0.75	1800	143/5JP	001180T3E143JP-SG	\$626	P1S	40	1.15	1.50	85.5	16.772	230/460	9;34
1.5	1.1	3600	143/5JP	001560T3E143JP-SG	\$674	P1S	35	1.15	1.90	84.0	16.772	230/460	9;34
		1800	143/5JP	001580T3E145JP-SG	\$693	P1S	47	1.15	2.10	86.5	17.953	230/460	9;34
2	1.5	3600	143/5JP	002360T3E145JP-SG	\$720	P1S	42	1.15	2.40	85.5	17.165	230/460	9;34
		1800	143/5JP	002180T3E145JP-SG	\$747	P1S	45	1.15	2.70	86.5	17.953	230/460	9;34
3	2.2	3600	143/5JP	003360T3E145JP-SG	\$800	P1S	45	1.15	3.60	85.5	17.559	230/460	9;34
		1800	182/4JP	003180T3E182JP-SG	\$835	P1S	85	1.15	3.90	89.5	19.724	230/460	9;34
5	3.7	3600	182/4JP	005360T3E182JP-SG	\$962	P1S	74	1.15	6.10	86.5	19.331	230/460	9;34
		1800	182/4JP	005180T3E184JP-SG	\$1,019	P1S	99	1.15	6.30	89.5	20.906	230/460	9;34
7.5	5.5	3600	182/4JP	007360T3E184JP-SG	\$1,256	P1S	89	1.15	8.70	88.5	19.724	230/460	9;34
		1800	213/5JP	007180T3E213JP-SG	\$1,320	P1S	144	1.15	9.30	91.0	21.575	230/460	9;34
		1800	213/5JP	007180T3H213JP-SG	\$1,320	P1S	144	1.15	7.40	91.0	21.575	575	9;34
		1800	213/5JP	007180T3V213JP-SG	\$1,320	P1S	144	1.15	10.6	91.0	21.575	200/400	9;34
10	7.5	3600	213/5JP	010360T3E213JP-SG	\$1,489	P1S	144	1.15	12.0	89.5	21.969	230/460	9;34
		3600	213/5JP	010360T3H213JP-SG	\$1,489	P1S	144	1.15	9.60	89.5	21.969	575	9;34
		1800	213/5JP	010180T3E215JP-SG	\$1,566	P1S	149	1.15	12.4	91.7	21.575	230/460	9;34
		1800	213/5JP	010180T3H215JP-SG	\$1,566	P1S	149	1.15	9.9	91.7	21.575	575	9;34
		1800	213/5JP	010180T3V215JP-SG	\$1,566	P1S	149	1.15	14.3	91.7	21.575	200/400	9;34
15	11	3600	213/5JP	015360T3E215JP-SG	\$1,907	P1S	160	1.15	17.2	90.2	22.756	230/460	9;34
		3600	213/5JP	015360T3H215JP-SG	\$1,907	P1S	160	1.15	13.8	90.2	22.756	575	9;34
		1800	254/6JP	015180T3E254JP-SG	\$2,275	P1S	228	1.15	18.6	93.0	24.843	230/460	9;34
20	15	3600	254/6JP	020360T3E254JP-SG	\$2,387	P1S	204	1.15	23.8	91.0	24.843	230/460	9;34
		1800	254/6JP	020180T3E256JP-SG	\$2,693	P1S	252	1.15	25.0	93.0	24.843	230/460	9;34
25	18.5	3600	254/6JP	025360T3E256JP-SG	\$2,879	P1S	218	1.15	29.1	91.7	24.843	230/460	9;34
		1800	284JP	025180T3E284JP-G	\$3,221	P1C	392	1.15	29.9	93.6	27.141	230/460	34

Please refer to back cover for description of "NOTES"

For detailed specifications, data sheets, drawings and performance curves visit <http://www.weg.net>

Data subject to change without notice.

Can't find what you are looking for? Call 1-800-ASK-4WEG (275-4934)

Pump Motors

FIRE PUMP MOTORS

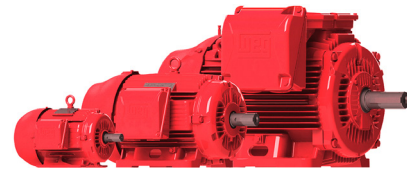
ODP and TEFC- Three Phase - High Efficiency

WEG Open Drip Proof motors are designed to meet demanding applications in environments where dirt and humidity are minimal, with W22 as an option for more demanding environments. These motors are specifically designed to provide maximum ventilation and cool operation.



ODP

Inverter Rated:
1000:1 for variable torque

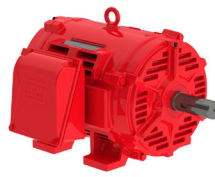


TEFC

Features that make a difference:

- Class F insulation (Impregnation Resin and Magnet wire are class H)
- Class B Rise at 1.15 Service Factor
- F1 Mounted (Cast Iron Frame motors are F2 convertible)
- Stainless Steel Nameplate - Laser etched with high contrast background (Cast Iron Frames only)
- Cast Iron Frames: Regreasable ball bearings (Frames 254T and up)
- Rolled Steel Frames: ZZ ball bearings (Permanently lubricated)
- UL Listed for Fire Pump service
- 12 leads on 200/400V and 230/460V available on all frames.





ODP - Three Phase

HP	kW	RPM	Frame	Catalog Number	List Price	Mult. Symbol	Approx. Shipping Weight (lbs)	Service Factor	FL Amps @ High	FL Eff (%)	"C" Dimension (in)	Voltage (V)	Notes
20	15	3600	254T	020360P3EFP254T-W40	\$1,469	W1B	229	1.15	24.3	90.2	20.537	230/460	30
		1800	254/6T	020180P3EFP256T-W40	\$1,526	W1B	229	1.15	24.6	91.0	22.285	230/460	30,51
25	18.5	3600	254/6T	025360P3EFP256T-S	\$1,783	W1S	192	1.15	29.0	91.0	20.472	230/460	9;30
		3600	254/6T	025360P3HFP256T-S	\$1,783	W1S	192	1.15	23.2	91.0	20.472	575	9;30
		3600	254/6T	025360P3VFP256T-S	\$1,783	W1S	192	1.15	33.3	91.0	20.472	200/400	9;30
		3600	254/6T	025360P3EFP256T-W40	\$1,783	W1B	224	1.15	29.7	91.0	22.285	230/460	30
		3600	254/6T	025360P3HFP256T-W40	\$1,783	W1B	223	1.15	23.8	91.0	22.285	575	30
		1800	284TS	025180P3EFP284TS-W40	\$1,799	W1B	395	1.15	30.1	91.7	21.783	230/460	30
		1800	284TS	025180P3VFP284TS-W40	\$1,799	W1B	395	1.15	34.6	91.7	21.783	200/400	30
30	22	3600	284TS	030360P3EFP284TS-W40	\$2,033	W1B	331	1.15	34.9	91.0	21.783	230/460	30
		3600	284TS	030360P3HFP284TS-W40	\$2,033	W1B	331	1.15	27.9	91.0	21.783	575	30
		3600	284TS	030360P3VFP284TS-W40	\$2,033	W1B	331	1.15	40.1	91.0	21.783	200/400	30
		1800	284/6TS	030180P3EFP286TS-W40	\$2,108	W1B	413	1.15	35.6	92.4	23.283	230/460	30
		1800	284/6TS	030180P3VFP286TS-W40	\$2,108	W1B	413	1.15	40.9	92.4	23.283	200/400	30
40	30	3600	284/6TS	040360P3EFP286TS-W40	\$2,757	W1B	365	1.15	47.2	91.7	23.283	230/460	30
		3600	284/6TS	040360P3HFP286TS-W40	\$2,757	W1B	364	1.15	37.8	91.7	23.283	575	30
		3600	284/6TS	040360P3VFP286TS-W40	\$2,757	W1B	365	1.15	54.3	91.7	23.283	200/400	30
		1800	324TS	040180P3EFP324TS-W40	\$2,652	W1B	467	1.15	48.2	93.0	24.307	230/460	30
		1800	324TS	040180P3HFP324TS-W40	\$2,652	W1B	466	1.15	38.6	93.0	24.307	575	30
		1800	324TS	040180P3VFP324TS-W40	\$2,652	W1B	468	1.15	55.4	93.0	24.307	200/400	30
50	37	3600	324TS	050360P3EFP324TS-W40	\$3,184	W1B	457	1.15	58.4	92.4	24.307	230/460	30
		3600	324TS	050360P3HFP324TS-W40	\$3,184	W1B	457	1.15	46.7	92.4	24.307	575	30
		3600	324TS	050360P3VFP324TS-W40	\$3,184	W1B	457	1.15	67.2	92.4	24.307	200/400	30
		3600	324TS	050360P3JFP324TS-W40	\$3,184	W1B	457	1.15	70.7	92.4	24.307	380	30
		1800	324/6TS	050180P3EFP326TS-W40	\$3,015	W1B	502	1.15	60.2	93.0	25.807	230/460	30
		1800	324/6TS	050180P3VFP326TS-W40	\$3,015	W1B	502	1.15	69.2	93.0	25.807	200/400	30
60	45	3600	326TS	060360P3VFP326TS*	\$4,008	W1B	527	1.15	81.2	93.0	26.181	200/400	30;31
		3600	324/6TS	060360P3EFP326TS-W40	\$4,008	W1B	485	1.15	70.6	93.0	25.807	230/460	30
		3600	324/6TS	060360P3HFP326TS-W40	\$4,008	W1B	484	1.15	56.5	93.0	25.807	575	30
		3600	324/6TS	060360P3VFP326TS-W40	\$4,008	W1B	487	1.15	81.2	93.0	25.807	200/400	30
		3600	324/6TS	060360P3JFP326TS-W40	\$4,008	W1B	486	1.15	85.5	93.0	25.807	380	30
		1800	364/5TS	060180P3EFP364TS-W40	\$3,703	W1B	771	1.15	71.0	93.6	27.522	230/460	30
		1800	364/5TS	060180P3HFP364TS-W40	\$3,703	W1B	767	1.15	56.8	93.6	27.522	575	30
		1800	364/5TS	060180P3VFP364TS-W40	\$3,703	W1B	771	1.15	81.7	93.6	27.522	200/400	30
75	55	3600	364/5TS	075360P3EFP364TS-W40	\$5,074	W1B	771	1.15	85.3	93.0	27.522	230/460	30
		3600	364/5TS	075360P3HFP364TS-W40	\$5,074	W1B	769	1.15	68.2	93.0	27.522	575	30
		3600	364/5TS	075360P3VFP364TS-W40	\$5,074	W1B	773	1.15	98.1	93.0	27.522	200/400	30
		3600	364/5TS	075360P3JFP364TS-W40	\$5,074	W1B	771	1.15	103	93.0	27.522	380	30
		1800	364/5TS	075180P3EFP365TS-W40	\$4,715	W1B	852	1.15	85.3	94.1	27.522	230/460	30
		1800	364/5TS	075180P3HFP365TS-W40	\$4,715	W1B	848	1.15	68.2	94.1	27.522	575	30
		1800	364/5TS	075180P3VFP365TS-W40	\$4,715	W1B	851	1.15	98.1	94.1	27.522	200/400	30

continued on next page

Please refer to back cover for description of "NOTES"

For detailed specifications, data sheets, drawings and performance curves visit <http://www.weg.net>

Data subject to change without notice.

FIRE PUMP MOTORS

ODP - Three Phase - continued

HP	kW	RPM	Frame	Catalog Number	List Price	Mult. Symbol	Approx. Shipping Weight (lbs)	Service Factor	FL Amps @ High	FL. Eff (%)	"C" Dimension (in)	Voltage (V)	Notes
100	75	3600	364/5TS	100360P3EFP365TS-W40	\$6,152	W1B	842	1.15	115	93.0	27.522	230/460	30
		3600	364/5TS	100360P3HFP365TS-W40	\$6,152	W1B	838	1.15	92.0	93.0	27.522	575	30
		3600	364/5TS	100360P3VFP365TS-W40	\$6,152	W1B	842	1.15	132	93.0	27.522	200/400	30
		3600	364/5TS	100360P3JFP365TS-W40	\$6,152	W1B	841	1.15	139	93.0	27.522	380	30
		1800	404/5TS	100180P3EFP404TS-W40	\$6,065	W1B	930	1.15	116	94.1	31.100	230/460	30
		1800	404/5TS	100180P3HFP404TS-W40	\$6,065	W1B	927	1.15	92.8	94.1	31.100	575	30
		1800	404/5TS	100180P3VFP404TS-W40	\$6,065	W1B	928	1.15	133	94.1	31.100	200/400	30
		1800	404/5T	100180P3EFP404T-W40	\$6,065	W1B	946	1.15	116	94.1	34.100	230/460	30
125	90	3600	404/5TS	125360P3EFP404TS-W40	\$7,762	W1B	940	1.15	137	93.6	31.100	230/460	30
		3600	404/5TS	125360P3GFP404TS-W40	\$7,762	W1B	934	1.15	137	93.6	31.100	460	30
		3600	404/5TS	125360P3HFP404TS-W40	\$7,762	W1B	934	1.15	110	93.6	31.100	575	30
		3600	404/5TS	125360P3VFP404TS-W40	\$7,762	W1B	934	1.15	158	93.6	31.100	200/400	30
		3600	404/5TS	125360P3JFP404TS-W40	\$7,762	W1B	938	1.15	166	93.6	31.100	380	30
		1800	404/5TS	125180P3EFP405TS-W40	\$6,651	W1B	1088	1.15	139	94.5	31.100	230/460	30
		1800	404/5TS	125180P3GFP405TS-W40	\$6,651	W1B	1084	1.15	139	94.5	31.100	460	30,51
		1800	404/5TS	125180P3HFP405TS-W40	\$6,651	W1B	1081	1.15	111	94.5	31.100	575	30
1800	404/5TS	125180P3VFP405TS-W40	\$6,651	W1B	1089	1.15	160	94.5	31.100	200/400	30		
150	110	3600	404/5TS	150360P3EFP405TS-W40	\$10,042	W1B	1042	1.15	164	93.6	31.100	230/460	30
		3600	404/5TS	150360P3GFP405TS-W40	\$10,042	W1B	1040	1.15	164	93.6	31.100	460	30
		3600	404/5TS	150360P3HFP405TS-W40	\$10,042	W1B	1038	1.15	131	93.6	31.100	575	30
		3600	404/5TS	150360P3VFP405TS-W40	\$10,042	W1B	1038	1.15	188	93.6	31.100	200/400	30
		3600	404/5TS	150360P3JFP405TS-W40	\$10,042	W1B	1042	1.15	199	93.6	31.100	380	30
		1800	444/5TS	150180P3EFP444TS-W40	\$8,891	W1B	1426	1.15	169	95.0	34.358	230/460	30
		1800	444/5TS	150180P3GFP444TS-W40	\$8,891	W1B	1424	1.15	169	95.0	34.358	460	30,51
		1800	444/5TS	150180P3HFP444TS-W40	\$8,891	W1B	1422	1.15	135	95.0	34.358	575	30
200	150	3600	444/5TS	200360P3GFP444TS-W40	\$12,782	W1B	1415	1.15	224	94.5	34.358	460	30
		3600	444/5TS	200360P3HFP444TS-W40	\$12,782	W1B	1408	1.15	179	94.5	34.358	575	30
		3600	444/5TS	200360P3JFP444TS-W40	\$12,782	W1B	1413	1.15	271	94.5	34.358	380	30
		1800	444/5TS	200180P3GFP445TS-W40	\$10,837	W1B	1471	1.15	230	95.0	34.358	460	30
		1800	444/5TS	200180P3HFP445TS-W40	\$10,837	W1B	1469	1.15	184	95.0	34.358	575	30
		3600	444/5TS	250360P3GFP445TS-W40	\$15,654	W1B	1472	1.15	282	94.5	34.358	460	30
250	185	3600	444/5TS	250360P3HFP445TS-W40	\$15,654	W1B	1515	1.15	226	94.5	34.358	575	30,51
		1800	444/5TS	250180P3GFP445TS-W40	\$13,358	W1B	1618	1.15	283	95.4	34.358	460	30
		1800	444/5TS	250180P3HFP445TS-W40	\$13,358	W1B	1617	1.15	226	95.4	34.358	575	30
		3600	444/5TS	300360P3GFP445TS-W40	\$19,556	W1B	1594	1.15	327	95.0	34.358	460	30
300	220	3600	444/5TS	300360P3HFP445TS-W40	\$19,556	W1B	1596	1.15	262	95.0	34.358	575	30
		1800	447/9TS	300180P3GFP447/9TSW4	\$19,168	W1B	2055	1.15	336	95.5	42.959	460	30
		3600	447/9TS	350360P3GFP447/9TSW4	\$22,346	W1B	2100	1.15	386	95.0	42.959	460	30
350	260	3600	447/9TS	350360P3HFP447/9TSW4	\$22,346	W1B	2020	1.15	309	95.0	42.959	575	30
		1800	447/9TS	350180P3GFP447/9TSW4	\$22,807	W1B	2239	1.15	393	95.5	42.959	460	30
		1800	447/9TS	350180P3HFP447/9TSW4	\$22,807	W1B	2555	1.15	314	95.5	42.959	575	30
		3600	447/9TS	400360P3GFP447/9TSW4	\$24,140	W1B	2180	1.15	443	95.4	42.959	460	30
400	300	3600	447/9TS	400360P3HFP447/9TSW4	\$24,140	W1B	2103	1.15	354	95.4	42.959	575	30
		1800	447/9TS	400180P3QFP447/9TSW4	\$25,570	W1B	2475	1.15	443	95.5	42.959	460	30,51
		1800	447/9TS	400180P3HFP447/9TSW4	\$25,570	W1B	2695	1.15	354	95.5	42.959	575	30,51
		3600	447/9TS	450360P3GFP447/9TSW4	\$26,055	W1B	2306	1.15	480	95.8	42.959	460	30
450	330	3600	447/9TS	450360P3HFP447/9TSW4	\$26,055	W1B	2306	1.15	384	95.8	42.959	575	30
		3600	447/9TS	500360P3GFP447/9TSW4	\$27,711	W1B	2365	1.15	539	95.8	42.959	460	30
500	370	3600	447/9TS	500360P3HFP447/9TSW4	\$27,711	W1B	2365	1.15	431	95.8	42.959	575	30



ODP - Three Phase - C-Face

HP	kW	RPM	Frame	Catalog Number	List Price	Mult. Symbol	Approx. Shipping Weight (lbs)	Service Factor	FL Amps @ High	FL Eff (%)	"C" Dimension (in)	Voltage (V)	Notes
7.5	5.5	3600	182/4TC	007360P3EFP184TC-S	\$734	W1S	70	1.15	8.90	87.5	14.764	230/460	9;30
		3600	182/4TC	007360P3HFP184TC-S	\$734	W1S	70	1.15	7.10	87.5	14.764	575	9;30
		3600	182/4TC	007360P3VFP184TC-S	\$734	W1S	70	1.15	10.2	87.5	14.764	200/400	9;30
10	7.5	3600	213/5TC	010360P3EFP213TC-S	\$901	W1S	121	1.15	12.2	88.5	16.575	230/460	9;30;31;51
		3600	213/5TC	010360P3HFP213TC-S	\$901	W1S	121	1.15	9.80	88.5	16.575	575	9;30
15	11	3600	213/5TC	015360P3EFP215TC-S	\$1,283	W1S	135	1.15	17.5	89.5	16.969	230/460	9;30;31
		3600	213/5TC	015360P3VFP215TC-S	\$1,283	W1S	135	1.15	20.1	89.5	16.969	200/400	9;30;31
20	15	3600	254/6TC	020360P3EFP254TC-S	\$1,469	W1S	202	1.15	23.7	90.2	20.472	230/460	9;30;31
		3600	254/6TC	020360P3HFP254TC-S	\$1,469	W1S	202	1.15	19.0	90.2	20.472	575	9;30
		3600	254/6TC	020360P3VFP254TC-S	\$1,469	W1S	202	1.15	27.3	90.2	20.472	200/400	9;30;31
		3600	254TC	020360P3EFP254TC-W40	\$1,469	W1B	235	1.15	24.3	90.2	21.037	230/460	30
		3600	254TC	020360P3HFP254TC-W40	\$1,469	W1B	235	1.15	19.4	90.2	21.037	575	30;51
		3600	254TC	020360P3VFP254TC-W40	\$1,469	W1B	235	1.15	28.0	90.2	21.037	200/400	30;51
		3600	254TC	020360P3EFP254TC-W40	\$1,469	W1B	235	1.15	28.0	90.2	21.037	200/400	30;51
25	18.5	3600	254/6TC	025360P3EFP256TC-S	\$1,783	W1S	207	1.15	29.0	91.0	20.472	230/460	9;30
		3600	254/6TC	025360P3VFP256TC-S	\$1,783	W1S	207	1.15	33.3	91.0	20.472	200/400	9;30;31
		3600	254/6TC	025360P3EFP256TC-W40	\$1,783	W1B	252	1.15	29.7	91.0	22.785	230/460	30
		3600	254/6TC	025360P3VFP256TC-W40	\$1,783	W1B	252	1.15	34.2	91.0	22.785	200/400	30
30	22	3600	284TSC	030360P3EFP284TSC-W4	\$2,033	W1B	339	1.15	34.9	91.0	21.783	230/460	30
		3600	284TSC	030360P3VFP284TSC-W4	\$2,033	W1B	338	1.15	40.1	91.0	21.783	200/400	30
40	30	3600	284/6TSC	040360P3EFP286TSC-W4	\$2,757	W1B	373	1.15	47.2	91.7	23.283	230/460	30
		3600	284/6TSC	040360P3HFP286TSC-W4	\$2,757	W1B	372	1.15	37.8	91.7	23.283	575	30
		3600	284/6TSC	040360P3VFP286TSC-W4	\$2,757	W1B	384	1.15	54.3	91.7	23.283	200/400	30
		1800	324TC	040180P3EFP324TC-W40	\$2,752	W1B	495	1.15	48.2	93.0	25.807	230/460	30
50	37	3600	324TSC	050360P3EFP324TSC-W4	\$3,184	W1B	473	1.15	58.4	92.4	24.307	230/460	30
		3600	324TSC	050360P3VFP324TSC-W4	\$3,184	W1B	491	1.15	67.2	92.4	24.307	200/400	30
		1800	324/6TC	050180P3EFP326TC-W40	\$3,135	W1B	519	1.15	60.2	93.0	27.307	230/460	30
60	45	3600	324/6TSC	060360P3EFP326TSC-W4	\$4,448	W1B	501	1.15	70.6	93.0	25.807	230/460	30
75	55	1800	364/5TC	075180P3EFP365TC-W40	\$5,109	W1B	835	1.15	85.3	94.1	29.725	230/460	30
100	75	1800	404/5TC	100180P3EFP404TC-W40	\$6,510	W1B	970	1.15	116	94.1	34.100	230/460	30
		1800	404/5TC	100180P3HFP404TC-W40	\$6,510	W1B	967	1.15	92.8	94.1	34.100	575	30
		1800	404/5TC	100180P3VFP404TC-W40	\$6,510	W1B	969	1.15	133	94.1	34.100	200/400	30
		1800	404/5TC	100180P3EFP404TC-W40	\$6,510	W1B	969	1.15	133	94.1	34.100	200/400	30
125	90	1800	404/5TC	125180P3GFP405TC-W40	\$6,651	W1B	1060	1.15	139	94.5	34.100	460	30
		1800	404/5TC	125180P3HFP405TC-W40	\$6,651	W1B	1060	1.15	111	94.5	34.100	575	30;51

Please refer to back cover for description of "NOTES"

For detailed specifications, data sheets, drawings and performance curves visit <http://www.weg.net>

Data subject to change without notice.

Can't find what you are looking for? Call 1-800-ASK-4WEG (275-4934)

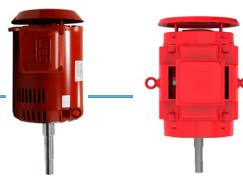
FIRE PUMP MOTORS

ODP – Three-Phase – JM – Footless Vertical



HP	kW	RPM	Frame	Catalog Number	List Price	Mult. Symbol	Approx. Shipping Weight (lbs)	Service Factor	FL Amps @ High	FL Eff (%)	"C" Dimension (in)	Voltage (V)	Notes
7.5	5.5	3600	182/4JM	007360P3EFP184JMV-S	\$993	P1S	83	1.15	8.90	87.5	17.600	230/460	9;15;30,51
		3600	182/4JM	007360P3HFP184JMV-S	\$993	P1S	83	1.15	7.10	87.5	17.600	575	9;15;30,51
		3600	182/4JM	007360P3VFP184JMV-S	\$993	P1S	83	1.15	10.2	87.5	17.600	200/400	9;15;30,51
10	7.5	3600	213/5JM	010360P3EFP213JMV-S	\$1,201	P1S	117	1.15	12.2	88.5	18.977	230/460	9;15;30,51
		3600	213/5JM	010360P3HFP213JMV-S	\$1,201	P1S	117	1.15	9.80	88.5	18.977	575	9;15;30,51
		3600	213/5JM	010360P3VFP213JMV-S	\$1,201	P1S	117	1.15	14.0	88.5	18.977	200/400	9;15;30,51
15	11	3600	213/5JM	015360P3EFP215JMV-S	\$1,617	P1S	132	1.15	17.5	89.5	19.370	230/460	9;15;30,51
		3600	213/5JM	015360P3HFP215JMV-S	\$1,617	P1S	132	1.15	14.0	89.5	19.370	575	9;15;30,51
		3600	213/5JM	015360P3VFP215JMV-S	\$1,617	P1S	132	1.15	20.1	89.5	19.370	200/400	9;15;30,51
20	15	3600	254/6JM	020360P3EFP254JMV-S	\$2,092	P1S	206	1.15	23.7	90.2	23.359	230/460	9;15;30,51
		3600	254/6JM	020360P3HFP254JMV-S	\$2,092	P1S	206	1.15	19.0	90.2	23.359	575	9;15;30,51
		3600	254/6JM	020360P3VFP254JMV-S	\$2,092	P1S	206	1.15	27.3	90.2	23.359	200/400	9;15;30,51
25	18.5	3600	254/6JM	025360P3EFP256JMV-S	\$2,352	P1S	211	1.15	29.0	91.0	23.359	230/460	9;15;30,51
		3600	254/6JM	025360P3HFP256JMV-S	\$2,352	P1S	211	1.15	23.2	91.0	23.359	575	9;15;30,51
		3600	254/6JM	025360P3VFP256JMV-S	\$2,352	P1S	211	1.15	33.3	91.0	23.359	200/400	9;15;30,51
30	22	3600	284JM	030360P3HFP284JMV*	\$3,181	P1C	368	1.15	27.6	91.0	26.584	575	15;30
		3600	284/6JM	030360P3EFP284JMV-W4	\$2,954	P1C	363	1.15	34.9	91.0	27.403	230/460	15;30,51
		3600	284/6JM	030360P3HFP284JMV-W4	\$3,181	P1C	363	1.15	27.9	91.0	27.403	575	15;30,51
		3600	284/6JM	030360P3VFP284JMV-W4	\$2,954	P1C	362	1.15	40.1	91.0	27.403	200/400	15;30,51
		1800	284/6JM	030180P3EFP286JMV-W4	\$3,175	P1C	435	1.15	35.6	92.4	27.403	230/460	15;30,51
		1800	284/6JM	030180P3HFP286JMV-W4	\$3,403	P1C	434	1.15	28.5	92.4	27.403	575	15;30,51
40	30	3600	284/6JM	040360P3EFP286JMV-W4	\$3,611	P1C	387	1.15	47.2	91.7	27.403	230/460	15;30,51
		3600	284/6JM	040360P3HFP286JMV-W4	\$3,611	P1C	386	1.15	37.8	91.7	27.403	575	15;30,51
		3600	284/6JM	040360P3VFP286JMV-W4	\$3,611	P1C	387	1.15	54.3	91.7	27.403	200/400	15;30,51
		1800	324/6JM	040180P3EFP324JMV-W4	\$3,621	P1C	502	1.15	48.2	93.0	29.427	230/460	15;30,51
		1800	324/6JM	040180P3HFP324JMV-W4	\$3,621	P1C	501	1.15	38.6	93.0	29.427	575	15;30,51
50	37	3600	324JM	050360P3HFP324JMV*	\$4,394	P1C	500	1.15	46.7	92.4	29.147	575	15;30
		3600	324/6JM	050360P3EFP324JMV-W4	\$4,394	P1C	492	1.15	58.4	92.4	29.427	230/460	15;30,51
		3600	324/6JM	050360P3HFP324JMV-W4	\$4,394	P1C	492	1.15	46.7	92.4	29.427	575	15;30,51
		3600	324/6JM	050360P3VFP324JMV-W4	\$4,664	P1C	492	1.15	67.2	92.4	29.427	200/400	15;30,51
		1800	324/6JM	050180P3EFP326JMV-W4	\$4,393	P1C	525	1.15	60.2	93.0	29.427	230/460	15;30,51
		1800	324/6JM	050180P3HFP326JMV-W4	\$4,527	P1C	523	1.15	48.2	93.0	29.427	575	15;30,51
60	45	3600	326JM	060360P3HFP326JMV*	\$5,305	P1C	555	1.15	56.5	93.0	30.643	575	15;30
		3600	324/6JM	060360P3EFP326JMV-W4	\$5,171	P1C	508	1.15	70.6	93.0	29.427	230/460	15;30,51
		3600	324/6JM	060360P3HFP326JMV-W4	\$5,305	P1C	507	1.15	56.5	93.0	29.427	575	15;30,51
		3600	324/6JM	060360P3VFP326JMV-W4	\$5,171	P1C	510	1.15	81.2	93.0	29.427	200/400	15;30,51

* To be discontinued and replaced by W40 model once inventory is depleted.



ODP – Three-Phase – JP – Footless Vertical

HP	kW	RPM	Frame	Catalog Number	List Price	Mult. Symbol	Approx. Shipping Weight (lbs)	Service Factor	FL Amps @ High	FL Eff (%)	“C” Dimension (in)	Voltage (V)	Notes
7.5	5.5	3600	182/4JP	007360P3EFP184JPV-S	\$993	P1S	83	1.15	8.90	87.5	20.671	230/460	9;15;30
		3600	182/4JP	007360P3HFP184JPV-S	\$993	P1S	83	1.15	7.10	87.5	20.671	575	9;15;30
		3600	182/4JP	007360P3VFP184JPV-S	\$993	P1S	83	1.15	10.2	87.5	20.671	200/400	9;15;30
		1800	213/5JP	007180P3EFP213JPV-S	\$1,028	P1S	127	1.15	9.30	88.5	22.835	230/460	9;15;30
		1800	213/5JP	007180P3HFP213JPV-S	\$1,028	P1S	127	1.15	7.40	88.5	22.835	575	9;15;30;51
10	7.5	3600	213/5JP	010360P3EFP213JPV-S	\$1,273	P1S	130	1.15	12.2	88.5	22.835	230/460	9;15;30
		3600	213/5JP	010360P3HFP213JPV-S	\$1,273	P1S	130	1.15	9.80	88.5	22.835	575	9;15;30
		3600	213/5JP	010360P3VFP213JPV-S	\$1,273	P1S	130	1.15	14.0	88.5	22.835	200/400	9;15;30
		1800	213/5JP	010180P3EFP215JPV-S	\$1,245	P1S	142	1.15	12.4	89.5	22.835	230/460	9;15;30
15	11	3600	213/5JP	015360P3EFP215JPV-S	\$1,617	P1S	144	1.15	17.5	89.5	23.229	230/460	9;15;30
		3600	213/5JP	015360P3HFP215JPV-S	\$1,617	P1S	144	1.15	14.0	89.5	23.229	575	9;15;30
		3600	213/5JP	015360P3VFP215JPV-S	\$1,617	P1S	144	1.15	20.1	89.5	23.229	200/400	9;15;30
		1800	254/6JP	015180P3EFP254JPV-S	\$1,847	P1S	203	1.15	18.5	91.0	26.233	230/460	9;15;30
		1800	254/6JP	015180P3VFP254JPV-S	\$1,847	P1S	203	1.15	21.3	91.0	26.233	200/400	9;15;30;51
20	15	3600	254/6JP	020360P3EFP254JPV-S	\$2,092	P1S	209	1.15	23.7	90.2	26.233	230/460	9;15;30
		3600	254/6JP	020360P3HFP254JPV-S	\$2,092	P1S	209	1.15	19.0	90.2	26.233	575	9;15;30
		3600	254/6JP	020360P3VFP254JPV-S	\$2,092	P1S	209	1.15	27.3	90.2	26.233	200/400	9;15;30
		1800	254/6JP	020180P3EFP256JPV-S	\$2,205	P1S	219	1.15	25.5	91.0	26.233	230/460	9;15;30;51
25	18.5	3600	254/6JP	025360P3EFP256JPV-S	\$2,518	P1S	214	1.15	29.0	91.0	26.233	230/460	9;15;30
		3600	254/6JP	025360P3HFP256JPV-S	\$2,518	P1S	214	1.15	23.2	91.0	26.233	575	9;15;30
		3600	254/6JP	025360P3VFP256JPV-S	\$2,518	P1S	214	1.15	33.3	91.0	26.233	200/400	9;15;30
		1800	284/6JP	025180P3EFP284JPV-W4	\$2,768	P1C	428	1.15	30.1	91.7	30.283	230/460	15;30
30	22	3600	284JP	030360P3EFP284JPV*	\$3,082	P1C	372	1.15	34.5	91.0	29.464	230/460	15;30
		3600	284JP	030360P3VFP284JPV*	\$3,082	P1C	372	1.15	39.7	91.0	29.464	200/400	15;30
		3600	284/6JP	030360P3EFP284JPV-W4	\$3,082	P1C	365	1.15	34.9	91.0	30.283	230/460	15;30
		3600	284/6JP	030360P3HFP284JPV-W4	\$3,181	P1C	364	1.15	27.9	91.0	30.283	575	15;30
		3600	284/6JP	030360P3VFP284JPV-W4	\$3,082	P1C	364	1.15	40.1	91.0	30.283	200/400	15;30
		1800	284/6JP	030180P3EFP286JPV-W4	\$3,224	P1C	437	1.15	35.6	92.4	30.283	230/460	15;30
		1800	284/6JP	030180P3VFP286JPV-W4	\$3,174	P1C	437	1.15	40.9	92.4	30.283	200/400	15;30
40	30	3600	286JP	040360P3EFP286JPV*	\$3,611	P1C	416	1.15	46.1	91.7	30.957	230/460	15;30
		3600	286JP	040360P3VFP286JPV*	\$3,611	P1C	416	1.15	53.0	91.7	30.957	200/400	15;30
		3600	284/6JP	040360P3EFP286JPV-W4	\$3,611	P1C	389	1.15	47.2	91.7	30.283	230/460	15;30
		3600	284/6JP	040360P3HFP286JPV-W4	\$3,499	P1C	388	1.15	37.8	91.7	30.283	575	15;30
		3600	284/6JP	040360P3VFP286JPV-W4	\$3,611	P1C	389	1.15	54.3	91.7	30.283	200/400	15;30
		1800	324JP	040180P3VFP324JPV*	\$3,987	P1C	509	1.15	56.8	93.0	32.027	200/400	15;30
		1800	324/6JP	040180P3EFP324JPV-W4	\$3,987	P1C	504	1.15	48.2	93.0	32.307	230/460	15;30
		1800	324/6JP	040180P3HFP324JPV-W4	\$3,621	P1C	502	1.15	38.6	93.0	32.307	575	15;30
		1800	324/6JP	040180P3VFP324JPV-W4	\$3,987	P1C	504	1.15	55.4	93.0	32.307	200/400	15;30

continued on next page

Please refer to back cover for description of “NOTES”

For detailed specifications, data sheets, drawings and performance curves visit <http://www.weg.net>

Data subject to change without notice.

FIRE PUMP MOTORS

ODP – Three-Phase – JP – Footless Vertical - *continued*

HP	kW	RPM	Frame	Catalog Number	List Price	Mult. Symbol	Approx. Shipping Weight (lbs)	Service Factor	FL Amps @ High	FL Eff (%)	"C" Dimension (in)	Voltage (V)	Notes
50	37	3600	324JP	050360P3EFP324JPV*	\$4,372	P1C	503	1.15	58.4	92.4	32.027	230/460	15;30
		3600	324JP	050360P3HFP324JPV*	\$4,372	P1C	506	1.15	46.7	92.4	32.027	575	15;30
		3600	324JP	050360P3VFP324JPV*	\$4,372	P1C	504	1.15	67.2	92.4	32.027	200/400	15;30
		3600	324/6JP	050360P3EFP324JPV-W4	\$4,372	P1C	494	1.15	58.4	92.4	32.307	230/460	15;30
		3600	324/6JP	050360P3HFP324JPV-W4	\$4,372	P1C	493	1.15	46.7	92.4	32.307	575	15;30
		3600	324/6JP	050360P3VFP324JPV-W4	\$4,372	P1C	494	1.15	67.2	92.4	32.307	200/400	15;30
		1800	324/6JP	050180P3EFP326JPV-W4	\$4,500	P1C	527	1.15	60.2	93.0	32.307	230/460	15;30
		1800	324/6JP	050180P3HFP326JPV-W4	\$4,394	P1C	525	1.15	48.2	93.0	32.307	575	15;30
		1800	324/6JP	050180P3VFP326JPV-W4	\$4,500	P1C	526	1.15	69.2	93.0	32.307	200/400	15;30
60	45	3600	326JP	060360P3EFP326JPV*	\$5,105	P1C	564	1.15	70.6	93.0	33.523	230/460	15;30
		3600	326JP	060360P3HFP326JPV*	\$5,105	P1C	558	1.15	56.5	93.0	33.523	575	15;30
		3600	326JP	060360P3VFP326JPV*	\$5,105	P1C	563	1.15	81.2	93.0	33.523	200/400	15;30
		3600	324/6JP	060360P3EFP326JPV-W4	\$5,105	P1C	510	1.15	70.6	93.0	32.307	230/460	15;30
		3600	324/6JP	060360P3HFP326JPV-W4	\$5,105	P1C	509	1.15	56.5	93.0	32.307	575	15;30
		3600	324/6JP	060360P3VFP326JPV-W4	\$5,105	P1C	511	1.15	81.2	93.0	32.307	200/400	15;30
		1800	364/5JP	060180P3EFP364JPV-W4	\$6,142	P1C	804	1.15	71.0	93.6	34.745	230/460	15;30
		1800	364/5JP	060180P3VFP364JPV-W4	\$6,142	P1C	804	1.15	81.7	93.6	34.745	200/400	15;30
75	55	3600	364/5JP	075360P3EFP364JPV-W4	\$7,525	P1C	804	1.15	85.3	93.0	34.745	230/460	15;30
		3600	364/5JP	075360P3HFP364JPV-W4	\$7,525	P1C	803	1.15	68.2	93.0	34.745	575	15;30
		3600	364/5JP	075360P3VFP364JPV-W4	\$7,525	P1C	806	1.15	98.1	93.0	34.745	200/400	15;30
		1800	364/5JP	075180P3EFP365JPV*	\$6,967	P1C	922	1.15	85.3	94.1	35.208	230/460	15;30
		1800	364/5JP	075180P3EFP365JPV-W4	\$6,967	P1C	885	1.15	85.3	94.1	34.745	230/460	15;30
		1800	364/5JP	075180P3VFP365JPV-W4	\$6,967	P1C	884	1.15	98.1	94.1	34.745	200/400	15;30
100	75	3600	364/5JP	100360P3EFP365JPV-W4	\$8,860	P1C	875	1.15	115	93.0	34.745	230/460	15;30
		3600	364/5JP	100360P3HFP365JPV-W4	\$8,860	P1C	871	1.15	92.0	93.0	34.745	575	15;30;51
		3600	364/5JP	100360P3VFP365JPV-W4	\$8,860	P1C	875	1.15	132	93.0	34.745	200/400	15;30
		1800	404/5JP	100180P3EFP404JPV*	\$8,825	P1C	992	1.15	118	94.1	38.452	230/460	15;30
		1800	404/5JP	100180P3EFP404JPV-W4	\$8,825	P1C	941	1.15	116	94.1	37.747	230/460	15;30
		1800	404/5JP	100180P3VFP404JPV-W4	\$8,825	P1C	939	1.15	133	94.1	37.747	200/400	15;30

* To be discontinued and replaced by W40 model once inventory is depleted.



W40 - ODP (50Hz) – Three-Phase – IE2

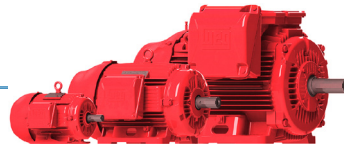
HP	kW	RPM	Frame	Catalog Number	List Price	Mult. Symbol	Approx. Shipping Weight (lbs)	Service Factor	FL Amps @ High	FL. Eff (%)	“C” Dimension (in)	Voltage (V)	Notes
20	15	3000	254/6T	020300P30FP256T-W40	\$1,690	W1B	284	1.15	26.0	90.2	22.285	380-415	30;32
		1500	254/6T	020150P30FP256T-W40	\$1,831	W1B	359	1.15	28.8	91.7	22.285	380-415	30;32
25	18.5	3000	254/6T	025300P30FP256T-W40	\$2,051	W1B	312	1.15	32.5	91.0	22.285	380-415	30;32
		1500	284TS	025150P30FP284TS-W40	\$2,069	W1B	401	1.15	34.2	91.7	21.783	380-415	30;32
30	22	3000	284TS	030300P30FP284TS-W40	\$2,338	W1B	382	1.15	40.0	91.0	21.783	380-415	30;32
		1500	284/6TS	030150P30FP286TS-W40	\$2,425	W1B	443	1.15	39.4	92.4	23.283	380-415	30;32
40	30	3000	284/6TS	040300P30FP286TS-W40	\$3,171	W1B	431	1.15	52.5	92.4	23.283	380-415	30;32
		1500	324TS	040150P30FP324TS-W40	\$3,050	W1B	531	1.15	55.4	93.0	25.807	380-415	30;32
50	37	3000	324TS	050300P30FP324TS-W40	\$3,662	W1B	510	1.15	66.3	92.4	25.807	380-415	30;32
		1500	324/6TS	050150P30FP326TS-W40	\$3,588	W1B	580	1.15	71.9	93.0	25.807	380-415	30;32
60	45	3000	324/6TS	060300P30FP326TS-W40	\$4,610	W1B	537	1.15	80.1	93.0	25.807	380-415	30;32
		1500	364/5TS	060150P30FP365TS-W40	\$4,455	W1B	802	1.15	83.6	93.6	27.520	380-415	30;32
75	55	3000	364/5TS	075300P30FP365TS-W40	\$5,836	W1B	840	1.15	96.8	93.0	27.520	380-415	30;32
		1500	364/5TS	075150P30FP365TS-W40	\$5,423	W1B	868	1.15	99.2	94.1	27.520	380-415	30;32
100	75	3000	364/5TS	100300P30FP365TS-W40	\$7,075	W1B	904	1.15	134	93.0	27.520	380-415	30;32
		1500	404/5TS	100150P30FP405TS-W40	\$6,975	W1B	1118	1.15	135	94.1	31.100	380-415	30;32
125	90	3000	404/5TS	125300P30FP405TS-W40	\$8,927	W1B	1109	1.15	157	93.6	31.100	380-415	30;32
		1500	444/5TS	125150P30FP445TS-W40	\$9,336	W1B	1396	1.15	160	94.5	34.575	380-415	30;32
150	110	3000	444/5TS	150300P30FP445TS-W40	\$13,422	W1B	1411	1.15	195	93.6	34.575	380-415	30;32
		1500	444/5TS	150150P30FP445TS-W40	\$10,225	W1B	1511	1.15	199	95.0	34.575	380-415	30;32
200	150	3000	444/5TS	200300P30FP445TS-W40	\$14,700	W1B	1552	1.15	258	95.0	34.575	380-415	30;32
		1500	447/9TS	200150P30FP449TS-W40	\$15,362	W1B	2270	1.15	262	95.0	42.959	380-415	30;32
250	185	3000	444/5TS	250300P30FP445TS-W40	\$18,003	W1B	1635	1.15	319	95.0	34.575	380-415	30;32
		1500	447/9TS	250150P30FP449TS-W40	\$20,127	W1B	2459	1.15	321	95.4	42.959	380-415	30;32
300	220	3000	447/9TS	300300P30FP449TS-W40	\$23,464	W1B	2261	1.15	384	95.0	42.959	380-415	30;32
		1500	5010/11TS	300150P30FP5011TS-W4	\$22,044	W1B	2778	1.15	387	95.4	56.992	380-415	30;32;51
350	260	3000	447/9TS	350300P30FP449TS-W40	\$25,697	W1B	2369	1.15	453	95.0	42.959	380-415	30;32
		1500	5010/11TS	350150P30FP5011TS-W4	\$29,804	W1B	4318	1.15	446	95.4	56.992	380-415	30;32
400	300	3000	447/9TS	400300P30FP449TS-W40	\$27,761	W1B	2596	1.15	509	95.4	42.959	380-415	30;32
		1500	5010/11TS	400150P30FP5011TS-W4	\$32,521	W1B	4481	1.15	509	95.4	56.992	380-415	30;32

Please refer to back cover for description of “NOTES”

For detailed specifications, data sheets, drawings and performance curves visit <http://www.weg.net>

Data subject to change without notice.

Can't find what you are looking for? Call 1-800-ASK-4WEG (275-4934)



FIRE PUMP MOTORS

TEFC (50Hz) – Three-Phase – IE2

HP	kW	RPM	Frame	Catalog Number	List Price	Mult. Symbol	Approx. Shipping Weight (lbs)	Service Factor	FL Amps @ High	FL Eff (%)	“C” Dimension (in)	Voltage (V)	Notes
15	11	3000	254/6T	01530EP30FP254T-W22	\$1,788	W1	266	1.15	19.3	90.2	24.945	380-415	30;32
		1500	254/6T	01515EP30FP254T-W22	\$1,811	W1	298	1.15	20.1	91.0	24.945	380-415	30;32
20	15	3000	254/6T	02030EP30FP256T-W22	\$2,334	W1	306	1.15	26.3	90.2	24.945	380-415	30;32
		1500	254/6T	02015EP30FP256T-W22	\$2,157	W1	347	1.15	27.7	90.9	24.945	380-415	30;32
25	18.5	3000	284/6TS	02530EP30FP284TS-W22	\$2,938	W1	368	1.15	31.3	92.4	26.557	380-415	30
		1500	284/6TS	02515EP30FP284TS-W22	\$2,688	W1	395	1.15	33.1	92.4	26.557	380-415	30;32
30	22	3000	284/6TS	03030EP30FP286TS-W22	\$3,490	W1	428	1.15	37.6	91.5	26.557	380-415	30
		1500	284/6TS	03015EP30FP286TS-W22	\$3,159	W1	447	1.15	40.0	92.1	26.557	380-415	30;32
40	30	3000	324/6TS	04030EP30FP324TS-W22	\$4,489	W1	568	1.15	50.3	92.5	29.616	380-415	30;32,51
		1500	324/6TS	04015EP30FP324TS-W22	\$3,969	W1	532	1.15	54.2	92.5	29.616	380-415	30;32
50	37	3000	324/6TS	05030EP30FP326TS-W22	\$5,050	W1	592	1.15	63.0	92.8	29.616	380-415	30,51
		1500	324/6TS	05015EP30FP326TS-W22	\$4,845	W1	567	1.15	66.2	93.0	29.616	380-415	30
60	45	3000	364/5TS	06030EP30FP364TS-W22	\$7,174	W1	927	1.15	74.2	93.0	32.276	380-415	30
		1500	364/5TS	06015EP30FP364TS-W22	\$7,020	W1	1029	1.15	77.6	93.8	32.276	380-415	30
75	55	3000	364/5TS	07530EP30FP365TS-W22	\$8,636	W1	983	1.15	92.0	93.5	32.276	380-415	30
		1500	364/5TS	07515EP30FP365TS-W22	\$8,270	W1	1050	1.15	95.3	94.5	32.276	380-415	30,51
100	75	3000	404/5TS	10030EP30FP405TS-W22	\$11,402	W1	1192	1.15	125	94.0	36.732	380-415	30
		1500	404/5TS	10015EP30FP405TS-W22	\$11,105	W1	1266	1.15	124	94.5	36.732	380-415	30,51
125	90	3000	444/5TS	12530EP30FP444TS-W22	\$14,583	W1	1664	1.15	156	94.5	41.200	380-415	30;32
		1500	444/5TS	12515EP30FP444TS-W22	\$14,011	W1	1686	1.15	158	94.6	41.200	380-415	30;32
150	110	3000	444/5TS	15030EP30FP445TS-W22	\$17,938	W1	1801	1.15	185	95.0	41.200	380-415	30;32
		1500	444/5TS	15015EP30FP445TS-W22	\$16,549	W1	1874	1.15	190	94.6	41.200	380-415	30,51
200	150	3000	445/7TS	20030EP30FP447TS-W22	\$22,384	W1	2242	1.15	236	95.2	44.951	380-415	30
		1500	445/7TS	20015EP30FP447TS-W22	\$20,043	W1	2107	1.15	264	95.3	44.951	380-415	30,51
250	185	3000	447/9TS	25030EP30FP449TS-W22	\$31,514	W1	2739	1.15	293	95.6	52.588	380-415	30
		1500	447/9TS	25015EP30FP449TS-W22	\$25,463	W1	2883	1.15	313	95.5	52.588	380-415	30
300	220	3000	447/9TS	30030EP30FP449TS-W22	\$36,356	W1	3141	1.15	351	95.7	52.588	380-415	30;32,51
		1500	L447/9TS	30015EP30FP449TS-W22	\$29,815	W1	3345	1.15	376	95.8	53.425	380-415	30;32,51

Pump Motors

P-BASE MOTORS

TEFC - Three Phase - NEMA Premium®

HP and HPH types available. Suitable for dusty and moist environments providing high starting torque.

Standard Features:

- 50/60 Hz capable
- Class F insulation (Impregnation Resin and magnet Wire are class H)
- Stainless Steel Nameplate - Laser etched with high contrast background
- Regreasable ball bearings (Frames 254HP and up)
- Gasketed conduit box
- Class I, Div. 2, Groups A, B, C & D – T3, Class II, Div 2, Groups F & G – T3C

Inverter Rated:

1000:1 for variable torque



Features that make a difference:

- 1.25 Service Factor up to 100 HP
- NPT Threaded terminal box
- HP and HPH types available
- NPT Threaded terminal box



P-BASE MOTORS

TEFC – Three-Phase – NEMA Premium®

HP	kW	RPM	Frame	Catalog Number	List Price	Mult. Symbol	Approx. Shipping Weight (lbs)	Service Factor	FL Amps @ High	FL. Eff (%)	"C" Dimension (in)	Voltage (V)	Notes
1	0.75	1800	143HP	00118ET3E143HP-W22	\$619	P1F	54	1.25	1.43	85.5	14.199	230/460	15,51
1.5	1.1	3600	L143HP	00156ET3E143HP-W22	\$573	P1F	40	1.25	1.98	84.0	16.255	230/460	15
		1800	145HP	00158ET3E145HP-W22	\$663	P1F	62	1.25	2.00	86.5	15.175	230/460	15,39
2	1.5	3600	145HP	00236ET3E145HP-W22	\$581	P1F	51	1.25	2.65	85.5	15.175	230/460	15
		1800	145HP	00218ET3E145HP-W22	\$730	P1F	63	1.25	2.72	86.5	15.175	230/460	15
3	2.2	3600	L145HP	00336ET3E145HP-W22	\$863	P1F	74	1.25	3.71	86.5	17.2	230/460	15
		3600	182HP	00336ET3E182HP-W22	\$925	P1F	88	1.25	3.68	86.5	16.841	230/460	15
		1800	182HP	00318ET3E182HP-W22	\$923	P1F	108	1.25	3.90	89.5	16.841	230/460	15,39
5	3.7	3600	184HP	00536ET3E184HP-W22	\$1,084	P1F	113	1.25	5.96	88.5	17.9	230/460	15
		1800	184HP	00518ET3E184HP-W22	\$1,045	P1F	117	1.25	6.40	89.5	17.9	230/460	15
7.5	5.5	3600	L184HP	00736ET3E184HP-W22	\$1,331	P1F	149	1.25	8.76	89.5	19.2	230/460	15
		3600	213HP	00736ET3E213HP-W22	\$1,440	P1F	139	1.25	8.57	89.5	19.850	230/460	15,51
		1800	213HP	00718ET3E213HP-W22	\$1,371	P1F	180	1.25	9.29	91.7	19.850	230/460	15
10	7.5	3600	215HP	01036ET3E215HP-W22	\$1,727	P1F	193	1.25	11.5	90.2	21.346	230/460	15
		1800	215HP	01018ET3E215HP-W22	\$1,641	P1F	201	1.25	12.6	91.7	21.346	230/460	15
15	11	3600	215HP	01536ET3E215HP-W22	\$2,240	P1F	227	1.25	17.0	91.0	21.346	230/460	15
		3600	254HP	01536ET3E254HP-W22	\$2,462	P1F	253	1.25	17.2	91.0	25.573	230/460	15
		1800	254HP	01518ET3E254HP-W22	\$2,463	P1F	364	1.25	18.0	92.4	25.573	230/460	15
20	15	3600	254HP	02036ET3E254HP-W22	\$2,738	P1F	341	1.25	23.2	91.0	25.573	230/460	15
		3600	256HP	02036ET3E256HP-W22	\$2,955	P1F	351	1.25	23.2	91.0	27.305	230/460	15
		1800	256HP	02018ET3E256HP-W22	\$2,721	P1F	308	1.25	24.4	93.0	27.305	230/460	15
25	18.5	3600	256HP	02536ET3E256HP-W22	\$3,336	P1F	417	1.00	28.1	91.7	27.305	230/460	15
		3600	284HP	02536ET3E284HP-W22	\$3,627	P1F	361	1.25	28.5	91.7	28.594	230/460	15
		3600	284HPH	02536ET3E284HPH-W22	\$3,627	P1F	535	1.25	28.5	91.7	30.344	230/460	15
		1800	284HP	02518ET3E284HP-W22	\$3,624	P1F	450	1.25	29.5	93.6	28.594	230/460	15
		1800	284HPH	02518ET3E284HPH-W22	\$3,624	P1F	484	1.25	29.5	93.6	30.344	230/460	15
30	22	3600	286HP	03036ET3E286HP-W22	\$4,365	P1F	392	1.25	33.8	91.7	30.089	230/460	15
		3600	286HPH	03036ET3E286HPH-W22	\$4,365	P1F	576	1.25	33.8	91.7	31.839	230/460	15,51
		1800	286HP	03018ET3E286HP-W22	\$3,967	P1F	436	1.25	35.1	93.6	30.089	230/460	15
		1800	286HPH	03018ET3E286HPH-W22	\$3,967	P1F	610	1.25	35.1	93.6	31.839	230/460	15
40	30	3600	324HP	04036ET3E324HP-W22	\$5,457	P1F	546	1.25	46.7	92.4	33.037	230/460	15
		1800	324HP	04018ET3E324HP-W22	\$5,247	P1F	634	1.25	47.1	94.1	33.037	230/460	15
50	37	3600	326HP	05036ET3E326HP-W22	\$6,681	P1F	583	1.25	56.1	93.0	34.531	230/460	15,51
		1800	326HP	05018ET3E326HP-W22	\$6,009	P1F	668	1.25	60.6	94.5	34.531	230/460	15
60	45	3600	326HP	06036ET3E326HP-W22	\$8,632	P1F	658	1.15	68.6	93.6	34.531	230/460	15
		3600	364/5HP	06036ET3E364HP-W22	\$9,484	P1F	823	1.25	68.2	94.1	37.940	230/460	15
		1800	364/5HP	06018ET3E364HP-W22	\$8,525	P1F	1100	1.25	68.4	95.0	37.940	230/460	15
75	55	3600	364/5HP	07536ET3E365HP-W22	\$10,977	P1F	845	1.25	81.9	93.6	37.940	230/460	15
		1800	364/5HP	07518ET3E365HP-W22	\$9,352	P1F	1114	1.25	82.3	95.4	37.940	230/460	15

continued on next page

TEFC – Three-Phase – NEMA Premium® - continued

HP	kW	RPM	Frame	Catalog Number	List Price	Mult. Symbol	Approx. Shipping Weight (lbs)	Service Factor	FL Amps @ High	FL. Eff (%)	“C” Dimension (in)	Voltage (V)	Notes
100	75	3600	404/5HP	10036ET3E405HP-W22	\$12,908	P1F	1043	1.25	112	94.1	41.340	230/460	15
		3600	404/5HPH	10036ET3E405HPH-W22	\$12,908	P1F	1227	1.25	112	94.1	41.340	230/460	15;51
		3600	404/5HP	10036ET3G405HP-W22	\$12,908	P1F	1486	1.25	112	94.1	41.340	460	15;51
		3600	404/5HPH	10036ET3G405HPH-W22	\$12,908	P1F	1592	1.25	112	94.1	41.340	460	15
		1800	404/5HP	10018ET3E405HP-W22	\$11,222	P1F	1138	1.25	112	95.4	41.340	230/460	15
		1800	404/5HPH	10018ET3E405HPH-W22	\$11,222	P1F	1604	1.25	112	95.4	41.340	230/460	15
		1800	404/5HP	10018ET3G405HP-W22	\$11,222	P1F	1475	1.25	112	95.4	41.340	460	15
		1800	404/5HPH	10018ET3G405HPH-W22	\$11,222	P1F	1475	1.25	112	95.4	41.340	460	15
125	90	3600	444/5HP	12536ET3G444HP-W22	\$17,969	P1F	2146	1.15	134	95.0	44.854	460	15
		1800	444/5HP	12518ET3G444HP-W22	\$15,687	P1F	2060	1.15	142	95.4	44.854	460	15
150	110	3600	444/5HP	15036ET3G445HP-W22	\$20,517	P1F	2275	1.15	163	95.0	44.854	460	15
		1800	444/5HP	15018ET3G445HP-W22	\$17,845	P1F	2262	1.15	193	95.0	44.854	460	15

Please refer to back cover for description of “NOTES”

For detailed specifications, data sheets, drawings and performance curves visit <http://www.weg.net>

Data subject to change without notice.

Can't find what you are looking for? Call 1-800-ASK-4WEG (275-4934)

- Models in black text are Standard Efficiency
- Models in blue text are NEMA Premium® Efficiency
- Models in green text are NEMA Super Premium Efficiency

Catalog Notes

1	1.0 Service Factor	31	Rating is suitable for 1.0SF @ 50Hz. Also suitable for next lower HP @ 1.15SF 50Hz
2	Aluminum Frame with Removable Feet	32	Suitable for 1.15SF @ 50°C ambient
3	Automatic Reset Thermal Overload Protector	33	Suitable for 380V 60Hz when wired as YY (double WYE)
4	Manual Reset Thermal Overload Protector	34	AEGIS® Inside
5	CCW Rotation Viewed from Shaft End - Non Reversible	35	AEGIS® ring installation reduces the available "N-W" length
6	Compressor Duty	36	Super Premium
7	F2 Mount	37	Design A
8	F3 Mount	38	TEAO - Totally Enclosed Air Over
9	Rolled Steel Frame - Cannot be modified with T Box on opposite side	39	Cannot be modified with T Box on opposite side
10	Not Thermally Protected	40	NDE shaft with 3/8" drive socket
11	Metal fan - Not suitable for division 2	41	Also rated 230/460V 50Hz 1.0 SF
12	Reduced Frame	42	Rated 50°C ambient
13	Resilient Base	43	With insulated non drive end housing
14	Roller Bearing	44	With air deflector. Flange MOD not available
15	Round Body - Drip Cover Included	45	Also rated 380V 50Hz
16	Split-Phase Motor	46	56J shaft end with dual opposed threads (7/16-20 UNF-2A R.H and 3/8-16 UNF-2A L.H)
17	TENV - Totally Enclosed Non Ventilated	47	Motor designed with copper bar rotor
18	Z-Frame; Bigger Shaft Diameter and Bearings	48	Motor suitable for safe area only
19	105K Temperature Rise; VFD service requires HP derate	49	Rating suitable for replate to 1.15SF on variable torque VFD power
20	Round Body - Drip Cover NOT Included	50	Rating requires replate to Class H insulation for 1.15SF on variable torque VFD power
21	Stainless Steel Body	51	Not normally stocked. Factory build lead time may apply
22	Two Speed - Double Windings		
23	Two Speed - Single Winding		
24	Modified item. Usually ships in two weeks		
25	Brake rectifier suitable for 230VAC		
26	Brake rectifier suitable for 460VAC		
27	For Export Only (not to be used in the USA) due to Certification and/or Efficiency requirements.		
28	ODP Fan Cooled		
29	Standard Efficiency		
30	High Efficiency (EPACT)		